

CANCER REGISTRY 2006

**National Cancer Institute
Department of Medical Services
Ministry of Public Health
Thailand**

Edited by
Pattarawin Attasara, M.D.

ISSN 974-7980-57-6

NATIONAL CANCER INSTITUTE REGISTRY STAFFS

Consultant :

Asst. Prof. Visoot Vootiprux

Office Staffs :

Pattarawin Attasara, M.D.

Mrs. Rangsiya Buasom

Mrs. Prathum Prakobpan

Mrs. Phikul Panchaem

Mr. Somchoke Hongtong

Ms. Pannaporn Kusol

Ms. Penpak Hongjet

Ms. Maliwan Saroj

INTRODUCTION

This annual 2006 report of new cancer registered in The National Cancer Institute is the hospital base report. The Topographic and The Morphologic code of cancer is hope that the data may be useful for those who are interest in oncology and those faculty member who are planning for human resource, personal development and research on oncology

This report has been made possible by the collaboration of numerous persons within the National Cancer Institute. Thanks must go to all faculty members for their contribution in regularity and completeness of patient record forms. I also would like to thank doctor V. Vootiprux, MD. for his valuable assistance.

Finally, doctor W. Attasara, MD. and all the registry staffs, consultants, and volunteer in the record department are to be praised for their diligence and untiring enthushlasm in the performance of their duties in processing the data upon which this volume is based.



Dr. Thiravud Khuhaprema, M.D., F.I.C.S.

*Director, National Cancer Institute,
Bangkok, Thailand*

CONTENTS

Introduction	A
Table 1 Number of Patients	2
Table 2 Method of Treatment of Cancer Site of All Cancer	4
Table 3 Number of Cases by Age - Group in Males	6
Table 4 Number of Cases by Age - Group in Females	7
Table 5 Pathology According to Sites	8-21
Table 6 Type of Diagnosis for Breast Cancer	22
Table 7 Method of Treatment for Breast Cancer	24
Table 8 Type of Diagnosis for Cervix Cancer	25
Table 9 Method of Treatment for Cervix Cancer	27
Table 10 Type of Diagnosis for Lung Cancer	28
Table 11 Method of Treatment for Lung Cancer	30
Table 12 Type of Diagnosis for Liver Cancer	31
Table 13 Method of Treatment for Liver Cancer	33
Table 14 Type of Diagnosis for Colon and Rectum Cancer	34
Table 15 Method of Treatment for Colon and Rectum Cancer	36
Figure 1 The Most Common Cancers : Males	1
Figure 2 The Most Common Cancers : Females	1
Figure 3 Type of Diagnosis of Cancer Site of All Cancer	2
Figure 4 Type of Extension of Cancer Site of All Cancer	3
Figure 5 Number by Age - Group and Sex for All Cancer	3
Figure 6 Treatment of Cancer Site of All Cancer : Males	5
Figure 7 Treatment of Cancer Site of All Cancer : Males	5
Figure 8 Type of Extension for Breast Cancer	22
Figure 9 Number by Age - Group and Sex for Breast Cancer	23

CONTENTS

Figure 10	Type of Stage for Breast Cancer	23
Figure 11	Type of Extension for Cervix Cancer	25
Figure 12	Number by Age - Group and Sex for Cervix Cancer	26
Figure 13	Type of Stage for Cervix Cancer	26
Figure 14	Type of Extension for Lung Cancer	28
Figure 15	Number by Age - Group and Sex for Lung Cancer	29
Figure 16	Type of Stage for Lung Cancer	29
Figure 17	Type of Extension for Liver Cancer	31
Figure 18	Number by Age - Group and Sex for Liver Cancer	32
Figure 19	Type of Stage for Liver Cancer	32
Figure 20	Type of Extension for Colon and Rectum Cancer	35
Figure 21	Number by Age - Group and Sex for Colon and Rectum Cancer	36
Figure 22	Type of Stage for Colon and Rectum Cancer	36

FIGURE 1
The Most Common Cancer : Males

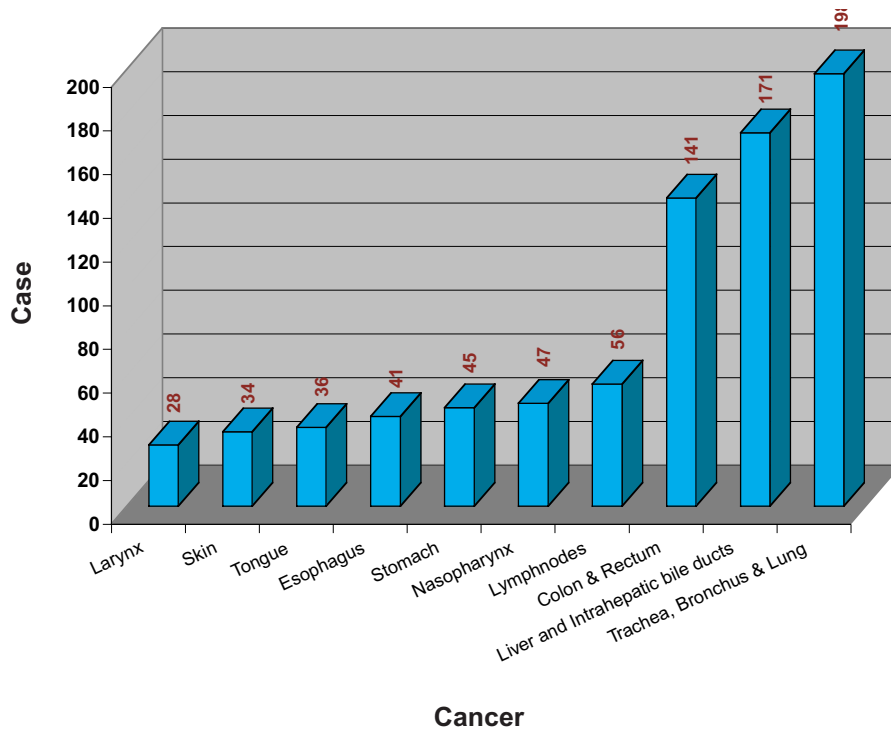


FIGURE 2
The Most Common Cancer : Females

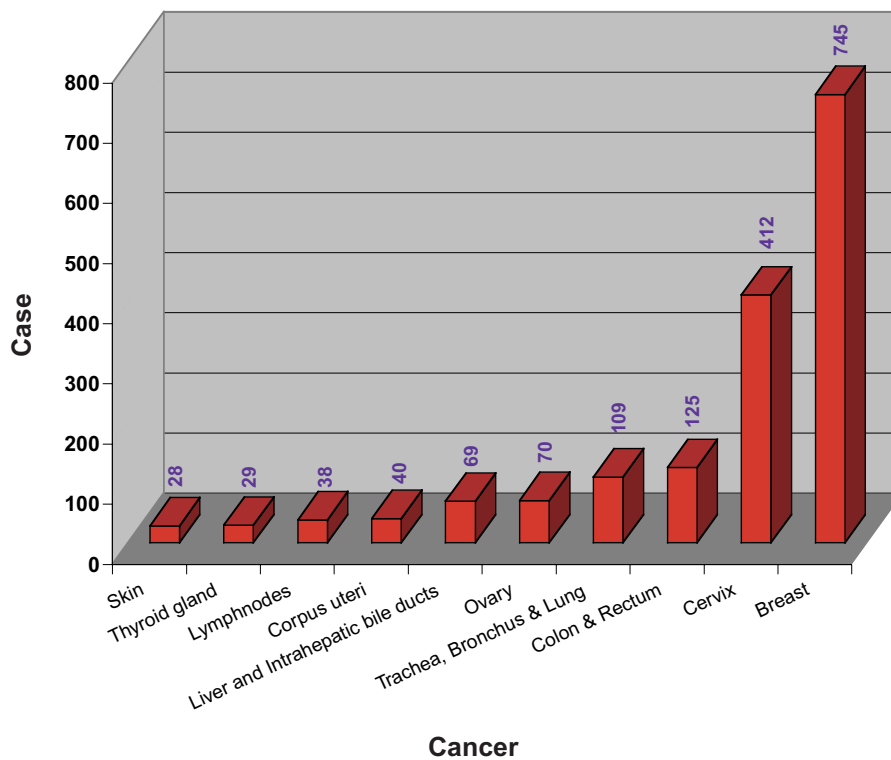


TABLE 1
Number of Patients

Type of Patient	No. of Cases	Percent
Total number of new patients	30,853	100
Total number of new patients with malignancies	3,089	10.1

FIGURE 3
Type of Diagnosis of Cancer Site of All Cancer

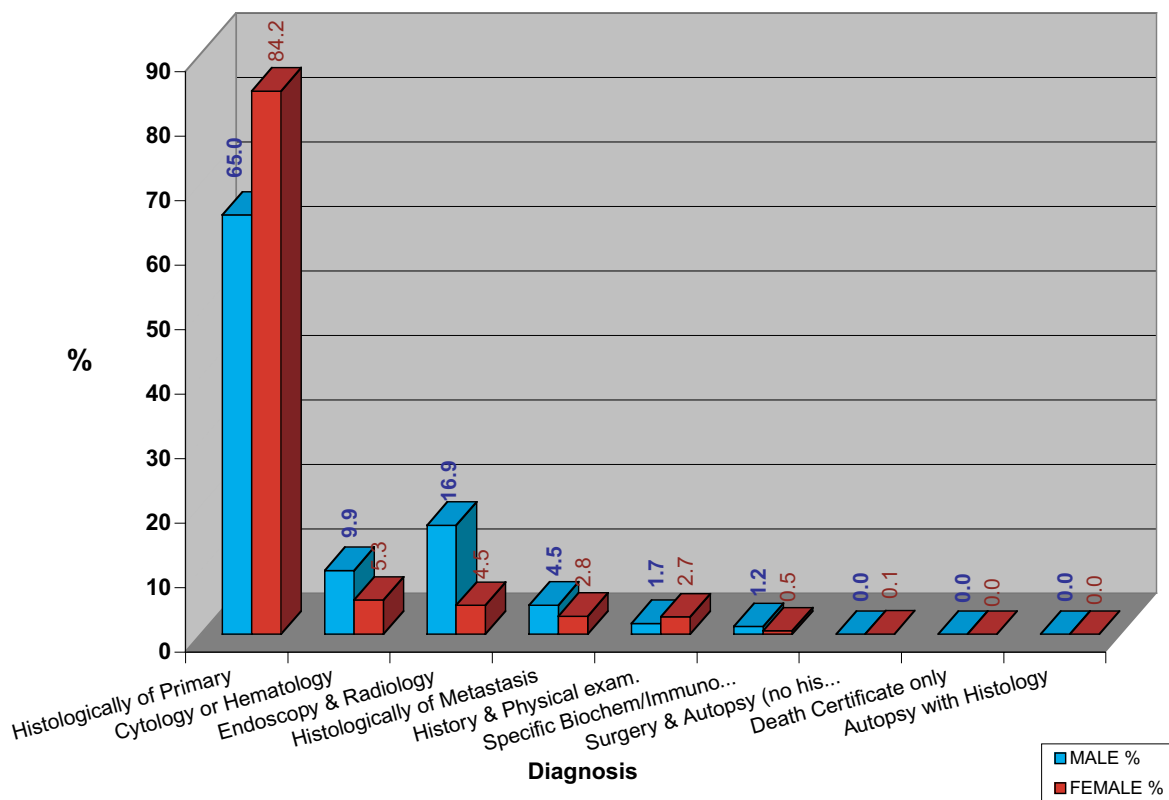


FIGURE 4
Type of Extension of Cancer Site of All Cancer

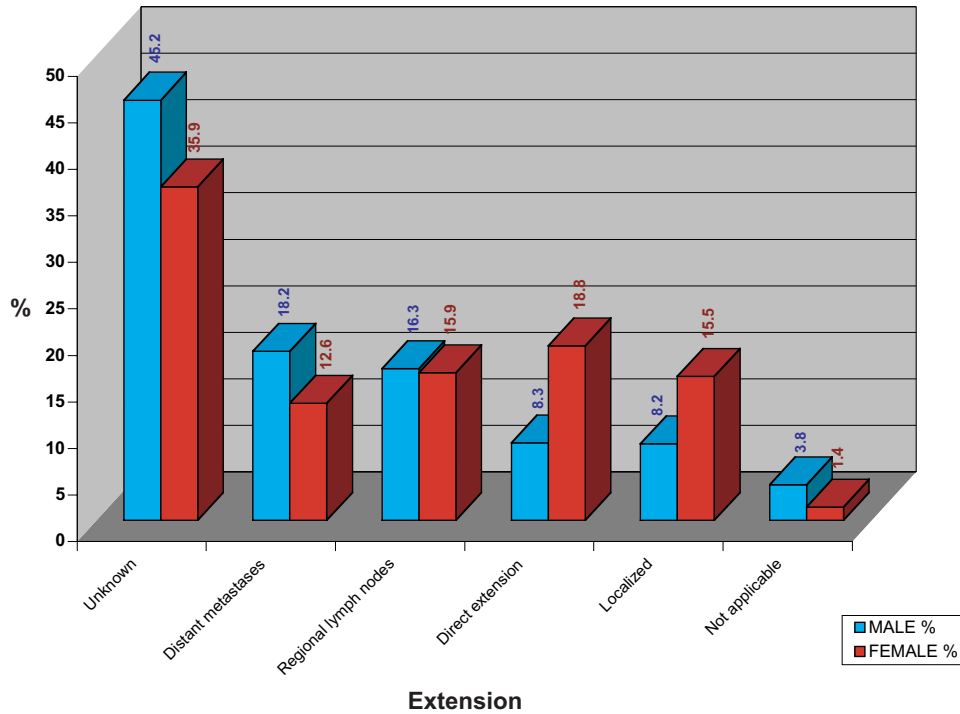


FIGURE 5
Number by Age - Group and Sex for All Cancer

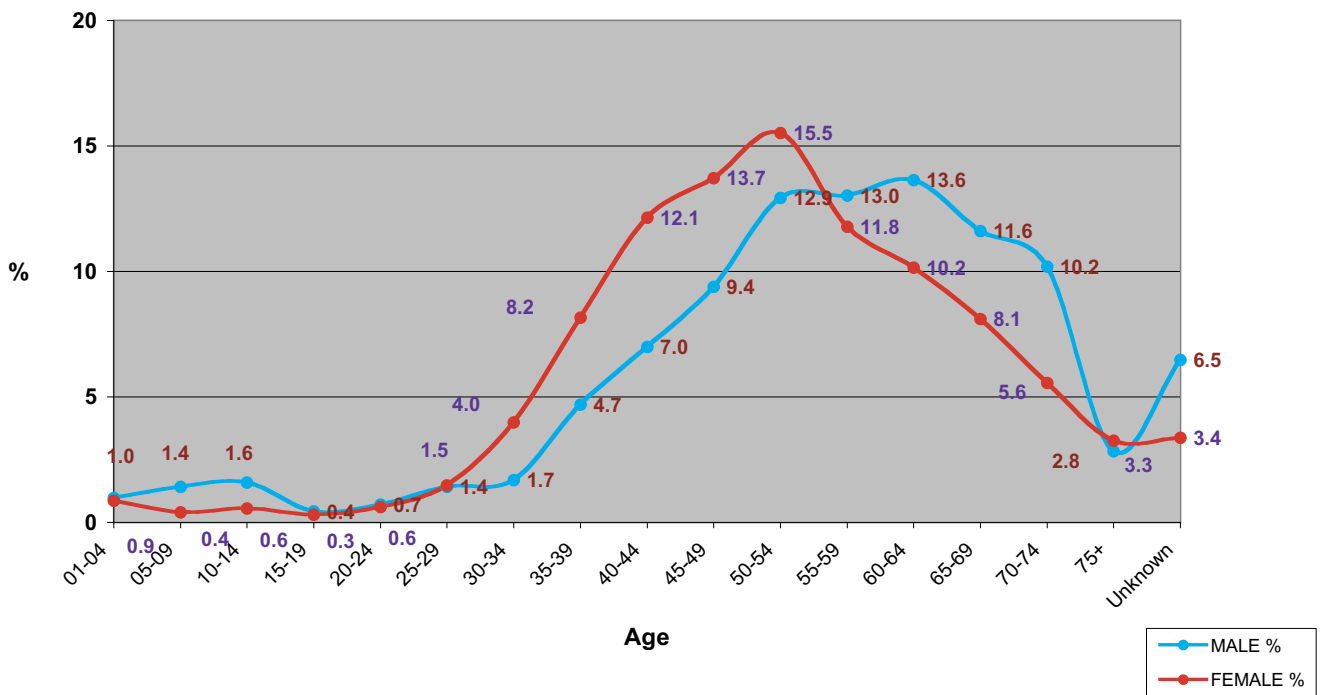


TABLE 2
Method of Treatment of Cancer Site of All Cancer

Method of Treatment	Male		Female		Total	
	n	%	n	%	n	%
Surgery	183	16.2	537	27.4	720	23.3
Radiotherapy	131	11.6	245	12.5	376	12.2
Chemotherapy	185	16.4	223	12.4	408	13.2
Hormone	1	0.1	2	0.1	3	0.1
Surgery + Radiotherapy	60	5.3	89	4.5	149	4.8
Surgery + Chemotherapy	56	5	173	8.8	229	7.4
Surgery + Hormone	0	0	7	0.4	7	0.2
Radiotherapy + Chemotherapy	65	5.8	47	2.4	112	3.6
Radiotherapy + Hormone	0	0	1	0.1	1	0
Chemotherapy + Hormone	0	0	1	0.1	1	0
Surgery + Radiotherapy + Chemotherapy	8	0.7	30	1.5	38	1.2
Surgery + Radiotherapy + Hormone	0	0	2	0.1	2	0.1
Surgery + Chemotherapy + Hormone	0	0	3	0.2	3	0.1
Support	315	27.9	442	22.6	757	24.5
Other	63	5.6	71	3.6	134	4.3
Not Recorded	62	5.5	87	4.4	149	4.8
Total	1,129	100	1,960	100	3,089	100

FIGURE 6
Treatment of Cancer Site of All Cancer : Males

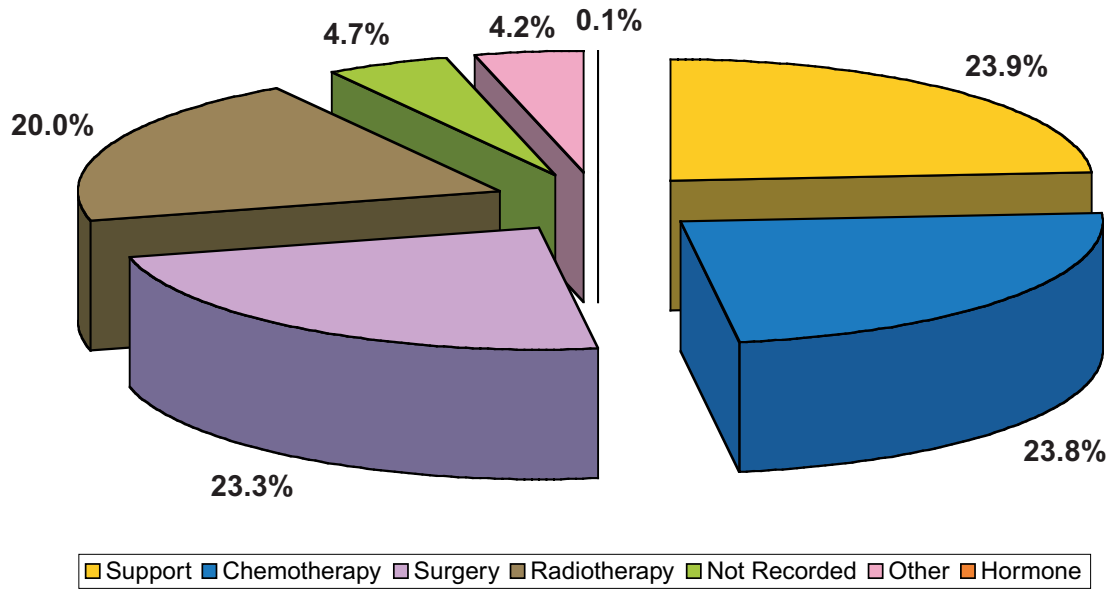


FIGURE 7
Treatment of Cancer Site of All Cancer : Females

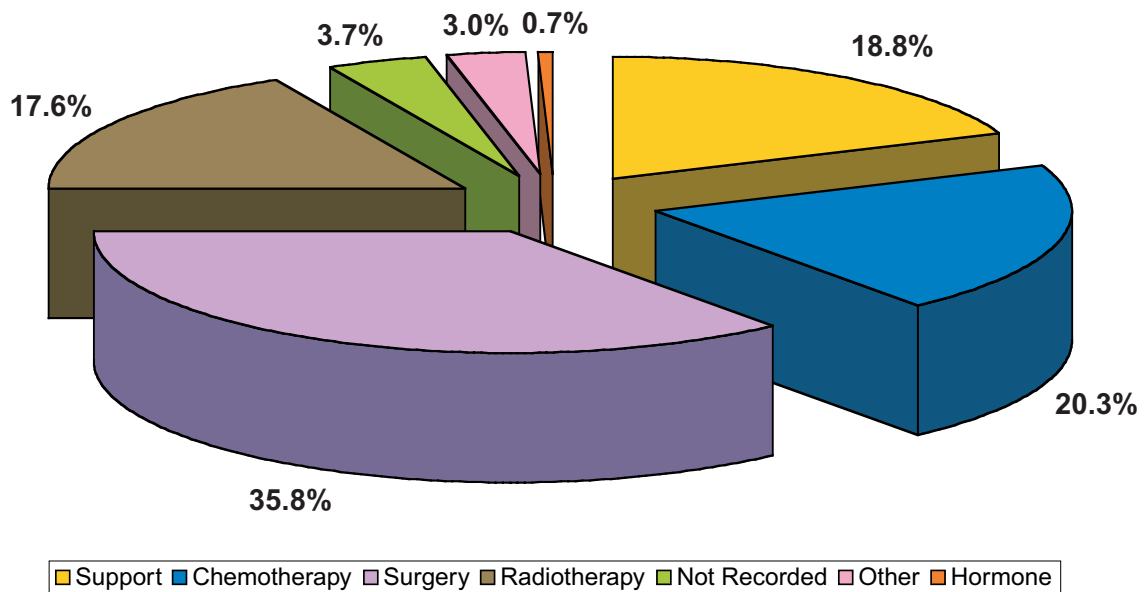


TABLE 3
Number of Cases by Age - Group in Males

Site	ICD 0	All Age	Age UNK.	1-4	5-9	10-14	15-19	20-24	25-29	30-34	35-39	40-44	45-49	50-54	55-59	60-64	65-69	70-74	+75
Lip	C00	1															1		
Tongue	C01-C02	36	4								1		5	3	9	3	5	5	1
Mouth	C03-C06	28	1						1					7	4	5	6	4	
Salivary gland	C07-C08	9								1	2			2	3	1			
Oropharynx	C09-C10	29								1	4	3	9	2	4	3	3		
Nasopharynx	C11	47				1		2	1	8	4	7	10	3	6	3	1	1	
Hypopharynx	C12-C13	24								1	2	3	3	4	4	2	2	3	
Oral Cavity	C14	1																1	
Esophagus	C15	41	1								1	2	5	7	11	9	4	1	
Stomach	C16	45	1							1	2	3	7	7	10	4	3	7	
Small intestine	C17	5									3	1		1					
Colon	C18	76	9					1		4	4	3	7	14	12	10	10	2	
Rectum, Rectosigmoid and Anus	C19-C21	65	4					1		1	5	8	8	13	12	8	4	1	
Liver and Intrahepatic bile ducts	C22	171	4						2	4	12	14	20	30	25	25	17	15	3
Gallbladder and other parts of biliary tract	C23-C24	4												1		2	1		
Pancreas	C25	25	3					1		1	5	1	2	1	2	6	3		
Nasal cavity	C30-C31	6		1									1	2		1		1	
Larynx	C32	28	2							1		4	2	6	7	3	3		
Trachea, Bronchus & Lung	c33-C34	198	22					1	4	3	14	15	25	24	27	25	27	11	
Thymus Mediastinum	C37-C38	14	1			2		1	1	2				1	1	2	3		
Bone	C40-C41	4					1						2				1		
Haematopoetic and Reticuloendothelial	C42	18		8	8					1								1	
Skin	C44	34	2					1	1	2	3	2	5	5	6	4	1	2	
Peripheral nerve and Autonomic nervous	C47	0																	
Retroperitonium and Peritonium	C48	6										1	1		3	1			
Conectine, Subcu.& Soft Tissues	C49	15	7	2	1	1						1			3				
Breast	C50	4								1			1	1				1	
Penis	C60	14								1	2	1	3	2		3	1	1	
Prostate gland	C61	9	5												1	1	1	1	
Testis	C62	8			1			3			1		1				1	1	
Other unspecified male genital organs	C63	1								1									
Kidney, Renal pelvis, Urinary organs	C64-C66,C68	10		2						1		3			1	1	2		
Bladder	C67	10	1	1										2	1	3	1	1	
Other and Unspecified urinary organs	C68	0																	
Eye and adnexa	C69	3		1						1								1	
Meninges	C70	1	1																
Brain	C71	23		2	1	3		2	1	2		3	2	3	1	2	1		
Spinal cord andnerovous system	C72	0																	
Thyroid gland	C73	8								1		1		1	1	1	2		
Adrenal gland	C74	1														1			
Other endocrine gland	C75	9		1	3	1	1	1						1	1				
Other and ill-defind site	C76	5	1	1										1	1	1			
Lymphnodes	C77	56	4		5	1	2	1	2	3	8	9	3	6	3	4	3	2	
Unknown primary site	C80	37		2				1	1	1	2	2	5	6		5	4	8	
All Site		1,129	73	11	16	18	5	8	16	19	53	79	106	146	147	154	131	115	32

TABLE 4
Number of Cases by Age - Group in Females

Site	ICD 0	All Age	Age UNK.	1-4	5-9	10-14	15-19	20-24	25-29	30-34	35-39	40-44	45-49	50-54	55-59	60-64	65-69	70-74	+75
Lip	C00	7	1										1					2	3
Tongue	C01-C02	14									1			4	3		2	4	
Mouth	C03-C06	20	3										2		2	4	1	3	5
Salivary gland	C07-C08	6		1					2				1		1			1	
Oropharynx	C09-C10	5	2												1	2			
Nasopharynx	C11	16								2	2	1	1	5	2		2	1	
Hypopharynx	C12-C13	5											1		2		1		1
Oral Cavity	C14	0																	
Esophagus	C15	6													1	3	1	1	
Stomach	C16	24									2	5	1	4	1	3	2	5	1
Small intestine	C17	7								1	2				3	1			
Colon	C18	65	2		1			1		2	3	11	5	8	8	16	5	3	
Rectum, Rectosigmoid and Anus	C19-C21	60	5							3	3	3	4	11	5	3	9	9	5
Liver and Intrahepatic bile ducts	C22	69	2	1					2	2	4	4	8	16	12	8	8	1	1
Gallbladder and other parts of biliary tract	C23-C24	9									1	2	1	3	2				
Pancreas	C25	13	2							1			1	2	3	1	1	1	1
Nasal cavity	C30-C31	5		1												1	1	1	1
Larynx	C32	1													1				
Trachea, Bronchus & Lung	C33-C34	109	8						1	2	3	7	8	15	19	23	10	8	5
Thymus Mediastinum	C37-C38	7				1							2		1	1		2	
Bone	C40-C41	4											1	1	1			1	
Haematopoetic and Reticuloendothelial	C42	9		3	1	3	1			1									
Skin	C44	28	2				1	1	1		2	2	3	3	1		4	2	6
Peripheral nerve and Autonomic nervous	C47	4		1	2								1						
Retropertionium and Peritonium	C48	3									1					1	1		
Conectine, Subcu.& Soft Tissues	C49	10		1	1			1	2						1	3		1	
Breast	C50	745	12						12	30	84	116	139	121	81	62	47	27	14
Vulva, Vagina	C51-C52	7	2										1					2	2
Cervix	C53	412	15					1	1	16	32	60	62	71	49	37	34	25	9
Corpus uteri	C54	40	2							1	1	3	3	8	7	8	5	1	1
Uterus	C55	2														1	1		
Ovary	C56	70					3	3	2	4	4	9	10	16	10	4	2	2	1
Other unspecified femal genital organs	C57	3												2		1			
Placenta	C58	5						1		2			2						
Kidney, Renal pelvis, Urinary organs	C64-C66,C68	3								1					1		1		
Bladder	C67	8	1												3	1	3		
Other and Unspecified urinary organs	C68	0																	
Eye and adnexa	C69	8		7								1							
Meninges	C70	1									1								
Brain	C71	22	1		3	4			1	1	4	1	1	1	3		1	1	
Spinal cord andnerovous system	C72	0																	
Thyroid gland	C73	29					1	1	4	6	4	3	1	2	2	3	1		1
Adrenal gland	C74	0																	
Other endocrine gland	C75	2				1				1									
Other and ill-defind site	C76	6	1	1									2	1		1			
Lymphnodes	C77	38	4			2		1	1	1	3	3	7	4	2	3	6	1	
Unknown primary site	C80	53	1	1				2		2	2	7		6	3	8	8	4	9
All Site		1,960	66	17	8	11	6	12	29	78	160	238	269	304	231	199	159	109	64

TABLE 5
Pathology According to Sites

ICD-O	Sites	Pathology	Male	Female	Total
C00			1	7	8
	001 External lower lip	8070 Squamous cell carcinoma, NOS	1	3	4
		8072 Squamous cell carcinoma large cell, nonkeratinizing, NOS	0	1	1
	004 Mucosa of lower lip	8070 Squamous cell carcinoma, NOS	0	1	1
	009 Lip, NOS	8070 Squamous cell carcinoma, NOS	0	2	2
C01-C02			36	14	50
	019 Base of tongue, NOS	8070 Squamous cell carcinoma, NOS	7	2	9
		8430 Mucoepidermoid carcinoma	0	1	1
		9680 Malignant lymphoma, large B-cell, diffuse, NOS	1	0	1
	029 Tongue, NOS	8070 Squamous cell carcinoma, NOS	28	9	37
		8200 Adenoid cystic carcinoma	0	1	1
		8851 Liposarcoma, well differentiated	0	1	1
C03-C06			28	20	48
	030 Upper gum	8070 Squamous cell carcinoma, NOS	0	1	1
	031 Lower gum	8070 Squamous cell carcinoma, NOS	2	2	4
	039 Gum, NOS	8051 Verrucous carcinoma, NOS	0	1	1
		8070 Squamous cell carcinoma, NOS	2	3	5
	049 Floor of mouth, NOS	8070 Squamous cell carcinoma, NOS	6	2	8
	050 Hard palate	8041 Small cell carcinoma, NOS	1	0	1
		8070 Squamous cell carcinoma, NOS	2	1	3
	051 Soft palate, NOS	8070 Squamous cell carcinoma, NOS	6	1	7
		8140 Adenocarcinoma, NOS	0	1	1
		9591 Malignant lymphoma, non-Hodgkin, NOS	1	0	1
	052 Uvula	8020 Carcinoma, undifferentiated, NOS	1	0	1
	059 Palate, NOS	8070 Squamous cell carcinoma, NOS	2	1	3
	060 Cheek mucosa	8020 Carcinoma, undifferentiated, NOS	0	1	1
		8070 Squamous cell carcinoma, NOS	2	2	4
		8430 Mucoepidermoid carcinoma	1	0	1
	069 Mouth, NOS	8070 Squamous cell carcinoma, NOS	2	4	6
C07-C08			9	6	15
	079 Parotid gland	8000 Neoplasm, malignant	1	0	1
		8140 Adenocarcinoma, NOS	2	1	3
		8200 Adenoid cystic carcinoma	0	1	1
		8430 Mucoepidermoid carcinoma	1	2	3
		8550 Acinar cell carcinoma	1	0	1
		8900 Rhabdomyosarcoma, NOS	0	1	1
		9560 Neurilemoma, malignant	0	1	1
	080 Submandibular gland	8070 Squamous cell carcinoma, NOS	1	0	1
		8140 Adenocarcinoma, NOS	1	0	1
		8200 Adenoid cystic carcinoma	1	0	1
		8430 Mucoepidermoid carcinoma	1	0	1

ICD-O	Sites	Pathology	Male	Female	Total
C09			24	4	28
	099 Tonsil, NOS	8010 Carcinoma, NOS	1	0	1
		8070 Squamous cell carcinoma, NOS	21	1	22
		8801 Spindle cell sarcoma	1	0	1
		9680 Malignant lymphoma, large B-cell, diffuse, NOS	1	3	4
C10			5	1	6
	100 Vallecula	8070 Squamous cell carcinoma, NOS	1	0	1
	109 Oropharynx, NOS	8070 Squamous cell carcinoma, NOS	4	1	5
C11			47	16	63
	118 Overlapping lesion of nasopharynx	8020 Carcinoma, undifferentiated, NOS	1	0	1
	119 Nasopharynx, NOS	8010 Carcinoma, NOS	6	4	10
		8012 Large cell carcinoma, NOS	1	0	1
		8020 Carcinoma, undifferentiated, NOS	22	4	26
		8041 Small cell carcinoma, NOS	1	0	1
		8070 Squamous cell carcinoma, NOS	13	5	18
		8071 Squamous cell carcinoma, keratinizing, NOS	1	1	2
		8140 Adenocarcinoma, NOS	0	1	1
		8200 Adenoid cystic carcinoma	0	1	1
		8470 Mucinous cystadenocarcinoma, NOS	1	0	1
		9680 Malignant lymphoma, large B-cell, diffuse, NOS	1	0	1
C12			6	1	7
	129 Pyriform sinus	8000 Neoplasm, malignant	2	0	2
		8070 Squamous cell carcinoma, NOS	4	1	5
C13			18	4	22
	138 Overlapping lesion of hypopharynx	8070 Squamous cell carcinoma, NOS	1	0	1
	139 Hypopharynx, NOS	8070 Squamous cell carcinoma, NOS	17	3	20
		8072 Squamous cell carcinoma large cell, nonkeratinizing, NOS	0	1	1
C14			1	0	1
	140 Pharynx, NOS	8070 Squamous cell carcinoma, NOS	1	0	1
C15			41	6	47
	150 Cervical esophagus	8070 Squamous cell carcinoma, NOS	1	0	1
	153 Upper third of esophagus	8070 Squamous cell carcinoma, NOS	1	0	1
	155 Lower third of esophagus	8070 Squamous cell carcinoma, NOS	1	0	1
	159 Esophagus, NOS	8000 Neoplasm, malignant	2	1	3
		8010 Carcinoma, NOS	3	0	3
		8070 Squamous cell carcinoma, NOS	31	4	35
		8140 Adenocarcinoma, NOS	1	1	2
		8560 Adenosquamous carcinoma	1	0	1

ICD-O	Sites	Pathology	Male	Female	Total
C16			45	24	69
160	Cardia, NOS	8140 Adenocarcinoma, NOS	2	0	2
163	Gastric antrum	8140 Adenocarcinoma, NOS	1	1	2
		9050 Mesothelioma, malignant	1	0	1
		9591 Malignant lymphoma, non-Hodgkin, NOS	0	1	1
169	Stomach, NOS	8000 Neoplasm, malignant	1	0	1
		8100 Carcinoma, NOS	0	1	1
		8140 Adenocarcinoma, NOS	32	17	49
		8141 Scirrhous adenocarcinoma	1	0	1
		8490 Signet ring cell carcinoma	5	3	8
		8936 Gastrointestinal stromal sarcoma	0	1	1
		9591 Malignant lymphoma, non-Hodgkin, NOS	1	0	1
		9680 Malignant lymphoma, large B-cell, diffuse, NOS	1	0	1
C17			5	7	12
171	Jejunum	8140 Adenocarcinoma, NOS	2	2	4
		8936 Gastrointestinal stromal sarcoma	0	2	2
		9590 Malignant lymphoma, NOS	0	1	1
172	Ileum	9680 Malignant lymphoma, large B-cell, diffuse, NOS	1	0	1
179	Small intestine	8936 Gastrointestinal stromal sarcoma	1	2	3
		9699 Marginal zone B-cell lymphoma, NOS	1	0	1
C18			76	65	141
180	Cecum	8140 Adenocarcinoma, NOS	1	4	5
181	Appendix	8140 Adenocarcinoma, NOS	0	1	1
182	Ascending colon	8140 Adenocarcinoma, NOS	2	0	2
		8480 Mucinous adenocarcinoma	0	1	1
183	Hepatic flexure of colon	8140 Adenocarcinoma, NOS	2	0	2
184	Transverse colon	8140 Adenocarcinoma, NOS	6	2	8
186	Descending colon	8140 Adenocarcinoma, NOS	4	2	6
		8000 Neoplasm, malignant	1	1	2
		8140 Adenocarcinoma, NOS	33	26	59
187	Sigmoid colon	8806 Desmoplastic small round cell tumor	0	1	1
		8000 Neoplasm, malignant	3	2	5
		8140 Adenocarcinoma, NOS	22	22	44
		8240 Carcinoid tumor, NOS	0	1	1
188	Overlapping lesion of colon	8480 Mucinous adenocarcinoma	1	1	2
		8481 Mucin-producing adenocarcinoma	1	1	2
		8481 Mucin-producing adenocarcinoma	1	1	2
189	Colon, NOS	8481 Mucin-producing adenocarcinoma	1	1	2
C19			13	11	24
199	Rectosigmoid junction	8000 Neoplasm, malignant	1	0	1
		8140 Adenocarcinoma, NOS	11	11	22
		8490 Signet ring cell carcinoma	1	0	1
C20			51	46	97
209	Rectum, NOS	8000 Neoplasm, malignant	5	1	6
		8021 Carcinoma, anaplastic, NOS	0	1	1
		8070 Squamous cell carcinoma, NOS	0	1	1
		8140 Adenocarcinoma, NOS	43	42	85

ICD-O	Sites	Pathology	Male	Female	Total
		8246 Neuroendocrine carcinoma, NOS	1	0	1
		8480 Mucinous adenocarcinoma	0	1	1
		8490 Signet ring cell carcinoma	1	0	1
		8936 Gastrointestinal stromal sarcoma	1	0	1
C21			1	3	4
	211 Anal canal	8070 Squamous cell carcinoma, NOS	1	0	1
		8140 Adenocarcinoma, NOS	0	2	2
	218 Overlapping lesion of rectum	8140 Adenocarcinoma, NOS	0	1	1
C22			171	69	240
	220 Liver	8000 Neoplasm, malignant	37	12	49
		8010 Carcinoma, NOS	1	1	2
		8140 Adenocarcinoma, NOS	3	1	4
		8141 Scirrhous adenocarcinoma	0	1	1
		8170 Hepatocellular carcinoma, NOS	74	27	101
		8970 Hepatoblastoma	0	1	1
	221 Intrahepatic bile duct	8000 Neoplasm, malignant	7	2	9
		8140 Adenocarcinoma, NOS	3	6	9
		8160 Cholangiocarcinoma	45	18	63
		8170 Hepatocellular carcinoma, NOS	1	0	1
C23			2	3	5
	239 Gallbladder	8000 Neoplasm, malignant	1	0	1
		8050 Papillary carcinoma, NOS	0	1	1
		8140 Adenocarcinoma, NOS	0	2	2
		8503 Intraductal papillary adenocarcinoma with invasion	1	0	1
C24			2	6	8
	240 Extrahepatic bile duct	8140 Adenocarcinoma, NOS	0	1	1
	241 Ampulla of Vater	8000 Neoplasm, malignant	1	1	2
		8140 Adenocarcinoma, NOS	0	4	4
	249 Biliary tract, NOS	8140 Adenocarcinoma, NOS	1	0	1
C25			25	13	38
	250 Head of pancreas	8000 Neoplasm, malignant	4	4	8
		8140 Adenocarcinoma, NOS	2	1	3
	252 Tail of pancreas	8000 Neoplasm, malignant	0	1	1
	253 Pancreatic duct	8140 Adenocarcinoma, NOS	1	0	1
	259 Pancreas, NOS	8000 Neoplasm, malignant	14	5	19
		8021 Carcinoma, anaplastic, NOS	0	1	1
		8140 Adenocarcinoma, NOS	3	1	4
		8936 Gastrointestinal stromal sarcoma	1	0	1
C30			3	2	5
	300 Nasal cavity	8013 Large cell neuroendocrine carcinoma	1	0	1
		8070 Squamous cell carcinoma, NOS	0	2	2
		8430 Mucoepidermoid carcinoma	1	0	1
		9680 Malignant lymphoma, large B-cell, diffuse, NOS	1	0	1

ICD-O	Sites	Pathology	Male	Female	Total
C31			3	3	6
	310 Maxillary sinus	9473 Primitive neuroectodermal tumor, NOS	1	0	1
		8041 Small cell carcinoma, NOS	1	0	1
		8070 Squamous cell carcinoma, NOS	1	2	3
	311 Ethmoid sinus	8900 Rhabdomyosarcoma, NOS	0	1	1
C32			28	1	29
	320 Glottis	8070 Squamous cell carcinoma, NOS	14	0	14
		8074 Squamous cell carcinoma, spindle cell	1	0	1
	321 Supraglottis	8070 Squamous cell carcinoma, NOS	3	1	4
	329 Larynx, NOS	8010 Carcinoma, NOS	2	0	2
		8070 Squamous cell carcinoma, NOS	8	0	8
C33-C34			198	109	307
	341 Upper lobe, lung	8000 Neoplasm, malignant	7	2	9
		8010 Carcinoma, NOS	6	2	8
		8012 Large cell carcinoma, NOS	1	0	1
		8020 Carcinoma, undifferentiated, NOS	2	1	3
		8041 Small cell carcinoma, NOS	6	0	6
		8046 Non-small cell carcinoma	10	3	13
		8070 Squamous cell carcinoma, NOS	11	3	14
		8140 Adenocarcinoma, NOS	20	16	36
		8250 Bronchiolo-alveolar adenocarcinoma, NOS	2	1	3
		8252 Bronchiolo-alveolar carcinoma, non-mucinous	0	1	1
		8310 Clear cell adenocarcinoma, NOS	2	0	2
		8481 Mucin-producing adenocarcinoma	0	1	1
		8520 Lobular carcinoma, NOS	0	1	1
		8550 Acinar cell carcinoma	0	1	1
		8560 Adenosquamous carcinoma	2	0	2
	342 Middle lobe, lung	8041 Small cell carcinoma, NOS	3	0	3
		8046 Non-small cell carcinoma	1	0	1
		8070 Squamous cell carcinoma, NOS	2	0	2
		8140 Adenocarcinoma, NOS	2	3	5
	343 Lower lobe, lung	8000 Neoplasm, malignant	2	0	2
		8010 Carcinoma, NOS	2	2	4
		8012 Large cell carcinoma, NOS	2	0	2
		8020 Carcinoma, undifferentiated, NOS	0	1	1
		8041 Small cell carcinoma, NOS	2	0	2
		8046 Non-small cell carcinoma	3	3	6
		8070 Squamous cell carcinoma, NOS	9	1	10
		8140 Adenocarcinoma, NOS	8	6	14
		8250 Bronchiolo-alveolar adenocarcinoma, NOS	3	3	6
		8260 Papillary adenocarcinoma, NOS	0	2	2
		8481 Mucin-producing adenocarcinoma	1	0	1
	349 Lung, NOS	8000 Neoplasm, malignant	19	11	30
		8010 Carcinoma, NOS	5	2	7
		8020 Carcinoma, undifferentiated, NOS	2	1	3
		8041 Small cell carcinoma, NOS	6	2	8
		8046 Non-small cell carcinoma	11	8	19
		8070 Squamous cell carcinoma, NOS	16	0	16
		8072 Squamous cell carcinoma large cell, nonkeratinizing, NOS	1	0	1
		8140 Adenocarcinoma, NOS	28	27	55

ICD-O	Sites	Pathology	Male	Female	Total
		8250 Bronchiolo-alveolar adenocarcinoma, NOS	1	1	2
		8260 Papillary adenocarcinoma, NOS	0	2	2
		8430 Mucoepidermoid carcinoma	0	1	1
		8806 Desmoplastic small round cell tumor	0	1	1
C37			1	2	3
	379 Thymus	8000 Neoplasm, malignant	0	1	1
		8580 Thymoma, malignant, NOS	1	1	2
C38			13	5	18
	381 Anterior mediastinum	8000 Neoplasm, malignant	1	0	1
		9064 Germinoma	1	1	2
	382 Posterior mediastinum	9540 Malignant peripheral nerve sheath tumor	0	1	1
	383 Mediastinum, NOS	8012 Large cell carcinoma, NOS	0	1	1
		9064 Germinoma	1	0	1
		9085 Mixed germ cell tumor	1	0	1
		9727 Precursor cell lymphoblastic lymphoma, NOS	1	0	1
	384 Pleura, NOS	8004 Malignant tumor, spindle cell type	1	0	1
		8041 Small cell carcinoma, NOS	2	0	2
		8046 Non-small cell carcinoma	1	0	1
		8140 Adenocarcinoma, NOS	3	2	5
		9050 Mesothelioma, malignant	1	0	1
C40-C41			4	4	8
	400 Long bones of upper limb, scapula and associated joints	9180 Osteosarcoma, NOS	1	0	1
	410 Bones of skull and face and associated joints	8050 Papillary carcinoma, NOS	1	0	1
		9680 Malignant lymphoma, large B-cell, diffuse, NOS	0	1	1
	411 Mandible	9180 Osteosarcoma, NOS	0	2	2
	412 Vertebral column	9731 Plasmacytoma, NOS	1	0	1
	419 Bone, NOS	8806 Desmoplastic small round cell tumor	1	0	1
		9732 Multiple myeloma	0	1	1
C42			18	9	27
	420 Blood	9801 Acute leukemia, NOS	1	0	1
		9835 Precursor cell lymphoblastic leukemia, NOS	1	1	2
	421 Bone marrow	9801 Acute leukemia, NOS	6	6	12
		9823 B-cell chronic lymphocytic leukemia/ small lymphocyt. lymphoma	1	0	1
		9826 Burkitt cell leukemia	1	0	1
		9835 Precursor cell lymphoblastic leukemia, NOS	7	2	9
		9873 Acute myeloid leukemia without maturation	1	0	1
C44			34	28	62
	441 Eyelid	8090 Basal cell carcinoma, NOS	0	1	1
	442 External ear	8070 Squamous cell carcinoma, NOS	0	1	1
		8430 Mucoepidermoid carcinoma	1	0	1
	443 Skin of other & unspecified parts of face	8070 Squamous cell carcinoma, NOS	0	1	1
		8090 Basal cell carcinoma, NOS	2	1	3
		9120 Hemangiosarcoma	1	0	1

ICD-O	Sites	Pathology	Male	Female	Total
444	Skin of scalp and neck	8070 Squamous cell carcinoma, NOS	1	1	2
		8090 Basal cell carcinoma, NOS	2	2	4
445	Skin of trunk	8004 Malignant tumor, spindle cell type	0	1	1
		8070 Squamous cell carcinoma, NOS	1	3	4
		8090 Basal cell carcinoma, NOS	0	1	1
		8140 Adenocarcinoma, NOS	0	1	1
		8247 Merkel cell carcinoma	1	0	1
		8560 Adenosquamous carcinoma	0	1	1
		8720 Malignant melanoma, NOS (except juvenile melanoma)	3	0	3
		8832 Dermatofibrosarcoma, NOS	0	1	1
446	Skin of upper limb and shoulder	8070 Squamous cell carcinoma, NOS	0	1	1
		8804 Epithelioid sarcoma	0	1	1
447	Skin of lower limb and hip	8070 Squamous cell carcinoma, NOS	6	0	6
		8720 Malignant melanoma, NOS (except juvenile melanoma)	3	2	5
		8723 Malignant melanoma, regressing	1	0	1
		8801 Spindle cell sarcoma	0	1	1
		8806 Desmoplastic small round cell tumor	1	1	2
		8832 Dermatofibrosarcoma, NOS	0	1	1
		9540 Malignant peripheral nerve sheath tumor	0	1	1
449	Skin, NOS	8000 Neoplasm, malignant	0	1	1
		8070 Squamous cell carcinoma, NOS	4	1	5
		8090 Basal cell carcinoma, NOS	2	0	2
		8720 Malignant melanoma, NOS (except juvenile melanoma)	3	2	5
		8721 Nodular melanoma	1	0	1
		8830 Malignant fibrous histiocytoma	0	1	1
		9140 Kaposi sarcoma	1	0	1
C47			0	4	4
472	Peripheral nerves & autonomic nervous system of lower limb and hip	8801 Spindle cell sarcoma	0	1	1
479	Autonomic nervous system, NOS	9500 Neuroblastoma, NOS	0	3	3
C48			6	3	9
480	Retroperitoneum	8830 Malignant fibrous histiocytoma	0	1	1
		8850 Liposarcoma, NOS	0	1	1
		8900 Rhabdomyosarcoma, NOS	3	0	3
481	Specified parts of peritoneum	8980 Carcinosarcoma, NOS	0	1	1
482	Peritoneum, NOS	9500 Neuroblastoma, NOS	3	0	3
C49			15	10	25
490	Connective, subcutaneous and other soft tissues of head, face, & neck	9440 Glioblastoma, NOS	1	0	1
		9591 Malignant lymphoma, non-Hodgkin, NOS	1	0	1
491	Connective, subcutaneous and other soft tissues of upper limb, shoulder	8013 Large cell neuroendocrine carcinoma	0	1	1
		8850 Liposarcoma, NOS	1	0	1

ICD-O	Sites	Pathology	Male	Female	Total
492	Connective, subcutaneous and other soft tissues of lower limb and hip	8800 Sarcoma, NOS	0	1	1
		8801 Spindle cell sarcoma	1	0	1
		8802 Giant cell sarcoma (except of bone)	2	0	2
		9051 Fibrous mesothelioma, malignant	0	1	1
		9150 Hemangiopericytoma, malignant	1	0	1
493	Connective, subcutaneous and other soft tissues of thorax	8806 Desmoplastic small round cell tumor	0	1	1
		8933 Adenosarcoma	1	0	1
494	Connective, subcutaneous and other soft tissues of abdomen	8850 Liposarcoma, NOS	0	1	1
		8912 Spindle cell rhabdomyosarcoma	1	0	1
495	Connective, subcutaneous and other soft tissues of pelvis	8806 Desmoplastic small round cell tumor	0	1	1
		8890 Leiomyosarcoma, NOS	0	1	1
496	Connective, subcutaneous and other soft tissues of trunk	8900 Rhabdomyosarcoma, NOS	1	1	2
499	Connective, subcutaneous and other soft tissues	8800 Sarcoma, NOS	2	0	2
		8801 Spindle cell sarcoma	0	1	1
		8806 Myxoid leiomyosarcoma		0	1
		8850 Liposarcoma, NOS	1	0	1
		8891 Epithelioid leiomyosarcoma	0	1	1
		8900 Rhabdomyosarcoma, NOS	1	0	1
C50			4	745	749
500	Nipple	8500 Infiltrating duct carcinoma, NOS	0	1	1
		8540 Paget disease, mammary	0	1	1
501	Central portion of breast	8500 Infiltrating duct carcinoma, NOS	0	3	3
502	Upper-inner quadrant of breast	8000 Neoplasm, malignant	0	2	2
		8140 Adenocarcinoma, NOS	0	1	1
		8480 Mucinous adenocarcinoma	0	1	1
		8500 Infiltrating duct carcinoma, NOS	0	33	33
		8510 Medullary carcinoma, NOS	0	1	1
		8520 Lobular carcinoma, NOS	0	1	1
		8523 Infiltrating duct mixed with other carcinoma	0	1	1
8575 Metaplastic carcinoma, NOS	0	1	1		
503	Lower-inner quadrant of breast	8000 Neoplasm, malignant	0	1	1
		8500 Infiltrating duct carcinoma, NOS	0	18	18
504	Upper-outer quadrant of breast	8000 Neoplasm, malignant	0	2	2
		8076 Squamous cell carcinoma, microinvasive	0	1	1
		8140 Adenocarcinoma, NOS	0	2	2
		8211 Tubular adenocarcinoma	0	1	1
		8480 Mucinous adenocarcinoma	0	1	1
		8500 Infiltrating duct carcinoma, NOS	0	109	109
		8503 Intraductal papillary adenocarcinoma with invasion	0	1	1
		8510 Medullary carcinoma, NOS	0	1	1
8520 Lobular carcinoma, NOS	0	2	2		
505	Lower-outer quadrant of breast	8500 Infiltrating duct carcinoma, NOS	0	20	20

ICD-O	Sites	Pathology	Male	Female	Total
508	Overlapping lesion of breast	8510 Medullary carcinoma, NOS	0	29	29
		9020 Phyllodes tumor, malignant	1	1	2
509	Breast, NOS	8000 Neoplasm, malignant	0	30	30
		8010 Carcinoma, NOS	0	6	6
		8020 Carcinoma, undifferentiated, NOS	0	1	1
		8140 Adenocarcinoma, NOS	1	9	10
		8211 Tubular adenocarcinoma	0	2	2
		8401 Apocrine adenocarcinoma	0	1	1
		8480 Mucinous adenocarcinoma	0	4	4
		8500 Infiltrating duct carcinoma, NOS	2	432	434
		8510 Medullary carcinoma, NOS	0	6	6
		8520 Lobular carcinoma, NOS	0	8	8
		8521 Infiltrating ductular carcinoma	0	4	4
		8523 Infiltrating duct mixed with other carcinoma	0	1	1
		8805 Undifferentiated sarcoma	0	1	1
		9020 Phyllodes tumor, malignant	0	2	2
		9680 Malignant lymphoma, large B-cell, diffuse, NOS	0	2	2
C51			0	4	4
510	Labium majus	8070 Squamous cell carcinoma, NOS	0	1	1
511	Labium minus	8070 Squamous cell carcinoma, NOS	0	2	2
519	Vulva, NOS	8070 Squamous cell carcinoma, NOS	0	1	1
C52			0	3	3
529	Vagina, NOS	8072 Squamous cell carcinoma large cell, nonkeratinizing, NOS	0	1	1
		8140 Adenocarcinoma, NOS	0	1	1
		8260 Papillary adenocarcinoma, NOS	0	1	1
C53			0	412	412
530	Endocervix	8070 Squamous cell carcinoma, NOS	0	1	1
		8140 Adenocarcinoma, NOS	0	60	60
		8260 Papillary adenocarcinoma, NOS	0	3	3
		8380 Endometrioid adenocarcinoma, NOS	0	1	1
		8480 Mucinous adenocarcinoma	0	2	2
		8481 Mucin-producing adenocarcinoma	0	1	1
		8560 Adenosquamous carcinoma	0	1	1
		531	Exocervix	8041 Small cell carcinoma, NOS	0
531	Exocervix	8052 Papillary squamous cell carcinoma	0	2	2
		8070 Squamous cell carcinoma, NOS	0	78	78
		8071 Squamous cell carcinoma, keratinizing, NOS	0	17	17
		8072 Squamous cell carcinoma large cell, nonkeratinizing, NOS	0	183	183
		8074 Squamous cell carcinoma, spindle cell	0	1	1
		8076 Squamous cell carcinoma, microinvasive	0	5	5
		8140 Adenocarcinoma, NOS	0	1	1
		538	Overlapping lesion of cervix uteri	8560 Adenosquamous carcinoma	0
539	Cervix uteri	8000 Neoplasm, malignant	0	3	3
		8020 Carcinoma, undifferentiated, NOS	0	1	1
		8021 Carcinoma, anaplastic, NOS	0	1	1
		8041 Small cell carcinoma, NOS	0	1	1
		8070 Squamous cell carcinoma, NOS	0	6	6

ICD-O	Sites	Pathology	Male	Female	Total
		8071 Squamous cell carcinoma, keratinizing, NOS	0	1	1
		8072 Squamous cell carcinoma large cell, nonkeratinizing, NOS	0	9	9
		8140 Adenocarcinoma, NOS	0	1	1
		8246 Neuroendocrine carcinoma, NOS	0	1	1
		8260 Papillary adenocarcinoma, NOS	0	1	1
		8384 Adenocarcinoma, endocervical type	0	1	1
		8482 Mucinous adenocarcinoma, endocervical type	0	1	1
		8520 Lobular carcinoma, NOS	0	1	1
		8560 Adenosquamous carcinoma	0	2	2
		8950 Mullerian mixed tumor	0	1	1
		8980 Carcinosarcoma, NOS	0	2	2
C54-C55			0	42	42
	541 Endometrium	8020 Carcinoma, undifferentiated, NOS	0	1	1
		8072 Squamous cell carcinoma large cell, nonkeratinizing, NOS	0	1	1
		8140 Adenocarcinoma, NOS	0	13	13
		8250 Bronchiolo-alveolar adenocarcinoma, NOS	0	1	1
		8260 Papillary adenocarcinoma, NOS	0	2	2
		8310 Clear cell adenocarcinoma, NOS	0	2	2
		8380 Endometrioid adenocarcinoma, NOS	0	10	10
		8441 Serous cystadenocarcinoma, NOS	0	1	1
		8931 Endometrial stromal sarcoma, low grade	0	1	1
	542 Myometrium	8890 Leiomyosarcoma, NOS	0	1	1
	549 Corpus uteri	8000 Neoplasm, malignant	0	1	1
		8010 Carcinoma, NOS	0	1	1
		8140 Adenocarcinoma, NOS	0	3	3
		8310 Clear cell adenocarcinoma, NOS	0	2	2
	559 Uterus, NOS	8380 Endometrioid adenocarcinoma, NOS	0	1	1
		8891 Epithelioid leiomyosarcoma	0	1	1
C56			0	70	70
	569 Ovary	8000 Neoplasm, malignant	0	15	15
		8010 Carcinoma, NOS	0	3	3
		8070 Squamous cell carcinoma, NOS	0	2	2
		8120 Transitional cell carcinoma, NOS	0	1	1
		8140 Adenocarcinoma, NOS	0	8	8
		8260 Papillary adenocarcinoma, NOS	0	2	2
		8310 Clear cell adenocarcinoma, NOS	0	9	9
		8330 Follicular adenocarcinoma, NOS	0	1	1
		8380 Endometrioid adenocarcinoma, NOS	0	8	8
		8440 Cystadenocarcinoma, NOS	0	1	1
		8441 Serous cystadenocarcinoma, NOS	0	3	3
		8460 Papillary serous cystadenocarcinoma	0	5	5
		8470 Mucinous cystadenocarcinoma, NOS	0	5	5
		8480 Mucinous adenocarcinoma	0	2	2
		8620 Granulosa cell tumor, malignant	0	1	1
		9060 Dysgerminoma	0	1	1
		9070 Embryonal carcinoma, NOS	0	1	1
		9071 Yolk sac tumor	0	2	2
C57			0	3	3
	574 Uterine adnexa	8010 Carcinoma, NOS	0	1	1
		8890 Leiomyosarcoma, NOS	0	2	2

ICD-O	Sites	Pathology	Male	Female	Total
C58			0	5	5
	589 Placenta	8000 Neoplasm, malignant	0	1	1
		8500 Infiltrating duct carcinoma, NOS	0	1	1
		9100 Choriocarcinoma, NOS	0	3	3
C60			14	0	14
	600 Prepuce	8051 Verrucous carcinoma, NOS	1	0	1
		8070 Squamous cell carcinoma, NOS	1	0	1
	601 Glans penis	8071 Squamous cell carcinoma, keratinizing, NOS	1	0	1
	609 Penis, NOS	8000 Neoplasm, malignant	1	0	1
		8070 Squamous cell carcinoma, NOS	10	0	10
C61			9	0	9
	619 Prostate gland	8000 Neoplasm, malignant	2	0	2
		8010 Carcinoma, NOS	2	0	2
		8140 Adenocarcinoma, NOS	5	0	5
C62			8	0	8
	629 Testis, NOS	8070 Squamous cell carcinoma, NOS	1	0	1
		8806 Desmoplastic small round cell tumor	1	0	1
		9061 Seminoma, NOS	1	0	1
		9064 Germinoma	1	0	1
		9085 Mixed germ cell tumor	1	0	1
		9591 Malignant lymphoma, non-Hodgkin, NOS	1	0	1
		9680 Malignant lymphoma, large B-cell, diffuse, NOS	2	0	2
C63			1	0	1
	632 Scrotum, NOS	8070 Squamous cell carcinoma, NOS	1	0	1
C64			7	0	7
	649 Kidney, NOS	8310 Clear cell adenocarcinoma, NOS	1	0	1
		8312 Renal cell carcinoma, NOS	4	0	4
		8960 Nephroblastoma, NOS	2	0	2
C65			2	3	5
	659 Renal pelvis	8070 Squamous cell carcinoma, NOS	0	2	2
		8120 Transitional cell carcinoma, NOS	2	1	3
C66-C68			11	8	19
	669 Ureter	8120 Transitional cell carcinoma, NOS	1	0	1
	679 Urinary bladder, NOS	8120 Transitional cell carcinoma, NOS	7	7	14
		8140 Adenocarcinoma, NOS	2	1	3
		8900 Rhabdomyosarcoma, NOS	1	0	1
C69			3	8	11
	690 Conjunctiva	8720 Malignant melanoma, NOS (except juvenile melanoma)	1	0	1
	692 Retina	9510 Retinoblastoma, NOS	1	7	8
		9511 Retinoblastoma, differentiated	0	1	1
	696 Orbit, NOS	9140 Kaposi sarcoma	1	0	1

ICD-O	Sites	Pathology	Male	Female	Total
C70			1	1	2
	709 Meninges, NOS	9120 Hemangiosarcoma	1	0	1
		9530 Meningioma, malignant	0	1	1
C71			23	22	45
	710 Cerebrum	9400 Astrocytoma, NOS	2	0	2
	711 Frontal lobe	9382 Mixed glioma	2	0	2
		9400 Astrocytoma, NOS	1	1	2
		9401 Astrocytoma, anaplastic	1	0	1
		9411 Gemistocytic astrocytoma	0	1	1
		9424 Pleomorphic xanthoastrocytoma	0	1	1
		9442 Gliosarcoma	0	1	1
		9451 Oligodendroglioma, anaplastic	0	1	1
		9591 Malignant lymphoma, non-Hodgkin, NOS	0	1	1
	712 Temporal lobe	9440 Glioblastoma, NOS	1	0	1
		9442 Gliosarcoma	1	0	1
		9596 Composite Hodgkin and non-Hodgkin lymphoma	0	1	1
	713 Parietal lobe	9400 Astrocytoma, NOS	0	1	1
		9440 Glioblastoma, NOS	1	1	2
	714 Occipital lobe	9440 Glioblastoma, NOS	0	1	1
	715 Ventricle, NOS	9392 Ependymoma, anaplastic	0	1	1
	716 Cerebellum, NOS	8070 Squamous cell carcinoma, NOS	0	1	1
		9470 Medulloblastoma, NOS	1	3	4
	717 Brain stem	9400 Astrocytoma, NOS	0	1	1
	718 Overlapping lesion of brain	9401 Astrocytoma, anaplastic	1	0	1
		9473 Primitive neuroectodermal tumor, NOS	1	0	1
	719 Brain, NOS	8000 Neoplasm, malignant	2	2	4
		8070 Squamous cell carcinoma, NOS	0	1	1
		8140 Adenocarcinoma, NOS	1	0	1
		9064 Germinoma	2	0	2
		9392 Ependymoma, anaplastic	0	1	1
		9400 Astrocytoma, NOS	2	1	3
		9440 Glioblastoma, NOS	1	0	1
		9450 Oligodendroglioma, NOS	0	1	1
		9470 Medulloblastoma, NOS	1	0	1
		9591 Malignant lymphoma, non-Hodgkin, NOS	1	0	1
		9684 Malignant lymphoma, large B-cell, diffuse, immunoblas. NOS	1	0	1
C73			8	29	37
	739 Thyroid gland	8000 Neoplasm, malignant	2	0	2
		8010 Carcinoma, NOS	0	1	1
		8012 Large cell carcinoma, NOS	0	1	1
		8021 Carcinoma, anaplastic, NOS	1	2	3
		8050 Papillary carcinoma, NOS	1	10	11
		8260 Papillary adenocarcinoma, NOS	3	9	12
		8330 Follicular adenocarcinoma, NOS	1	2	3
		8340 Papillary carcinoma, follicular variant	0	2	2
		8343 Papillary carcinoma, encapsulated	0	2	2
C74			1	0	1
	740 Cortex of adrenal gland	8010 Carcinoma, NOS	1	0	1

ICD-O	Sites	Pathology	Male	Female	Total
C75			9	2	11
751	Pituitary gland	8000 Neoplasm, malignant	1	0	1
		8140 Adenocarcinoma, NOS	1	1	2
753	Pineal gland	8000 Neoplasm, malignant	1	0	1
		9064 Germinoma	4	0	4
		9071 Yolk sac tumor	1	0	1
		9362 Pineoblastoma	1	1	2
C76			5	6	11
760	Head, face or neck, NOS	8070 Squamous cell carcinoma, NOS	0	1	1
		8890 Leiomyosarcoma, NOS	0	1	1
762	Abdomen, NOS	8140 Adenocarcinoma, NOS	1	0	1
		8460 Papillary serous cystadenocarcinoma	0	1	1
		8801 Spindle cell sarcoma	1	0	1
763	Pelvis, NOS	8070 Squamous cell carcinoma, NOS	1	0	1
		8260 Papillary adenocarcinoma, NOS	1	0	1
		9064 Germinoma	0	1	1
		9071 Yolk sac tumor	1	0	1
		9590 Malignant lymphoma, NOS	0	1	1
765	Lower limb, NOS	8806 Desmoplastic small round cell tumor	0	1	1
C77			56	38	94
770	Lymph nodes of head, face and neck	8000 Neoplasm, malignant	0	1	1
		8020 Carcinoma, undifferentiated, NOS	1	0	1
		8041 Small cell carcinoma, NOS	1	0	1
		8070 Squamous cell carcinoma, NOS	1	0	1
		8140 Adenocarcinoma, NOS	0	3	3
		9590 Malignant lymphoma, NOS	2	1	3
		9591 Malignant lymphoma, non-Hodgkin, NOS	6	1	7
		9596 Composite Hodgkin and non-Hodgkin lymphoma	1	1	2
		9650 Hodgkin lymphoma, NOS	2	1	3
		9652 Hodgkin lymphoma, mixed cellularity, NOS	0	1	1
		9680 Malignant lymphoma, large B-cell, diffuse, NOS	5	2	7
		9690 Follicular lymphoma, NOS	1	0	1
		9691 Follicular lymphoma, grade 2	0	1	1
771	Intrathoracic lymph nodes	8041 Small cell carcinoma, NOS	1	0	1
		8070 Squamous cell carcinoma, NOS	1	0	1
		8246 Neuroendocrine carcinoma, NOS	1	0	1
		9650 Hodgkin lymphoma, NOS	1	0	1
		9680 Malignant lymphoma, large B-cell, diffuse, NOS	1	0	1
		9690 Follicular lymphoma, NOS	1	0	1
772	Intra-abdominal lymph nodes	9590 Malignant lymphoma, NOS	1	0	1
		9591 Malignant lymphoma, non-Hodgkin, NOS	0	1	1
		9675 Malignant lymphoma, mixed small/large cell, diffuse	1	0	1
		9680 Malignant lymphoma, large B-cell, diffuse, NOS	0	1	1
773	Lymph nodes of axilla or arm	9590 Malignant lymphoma, NOS	0	1	1
		9670 Malignant lymphoma, small B lymphocytic, NOS	1	0	1
		9680 Malignant lymphoma, large B-cell, diffuse, NOS	0	1	1
		9690 Follicular lymphoma, NOS	0	1	1
		9691 Follicular lymphoma, grade 2	0	1	1
		9698 Follicular lymphoma, grade 3	1	0	1

ICD-O	Sites	Pathology	Male	Female	Total
774	Lymph nodes, inguinal region or leg	8560 Adenosquamous carcinoma	0	1	1
		9591 Malignant lymphoma, non-Hodgkin, NOS	0	2	2
		9650 Hodgkin lymphoma, NOS	3	0	3
		9680 Malignant lymphoma, large B-cell, diffuse, NOS	2	0	2
778	Lymph nodes of multiple regions	9650 Hodgkin lymphoma, NOS	0	1	1
		9673 Mantle cell lymphoma	0	1	1
779	Lymph node, NOS	8010 Carcinoma, NOS	1	0	1
		8070 Squamous cell carcinoma, NOS	0	1	1
		9590 Malignant lymphoma, NOS	4	0	4
		9591 Malignant lymphoma, non-Hodgkin, NOS	9	4	13
		9596 Composite Hodgkin and non-Hodgkin lymphoma	4	4	8
		9650 Hodgkin lymphoma, NOS	0	1	1
		9651 Hodgkin lymphoma, lymphocyte-rich	1	0	1
		9670 Malignant lymphoma, small B lymphocytic, NOS	0	1	1
		9680 Malignant lymphoma, large B-cell, diffuse, NOS	1	1	2
		9690 Follicular lymphoma, NOS	1	0	1
9714 Anaplastic large cell lymphoma, T cell/Null cell type	0	2	2		
C80			37	53	90
809	Unknown primary site	8000 Neoplasm, malignant	23	20	43
		8010 Carcinoma, NOS	6	30	36
		8020 Carcinoma, undifferentiated, NOS	4	1	5
		8260 Papillary adenocarcinoma, NOS	2	1	3
		8560 Adenosquamous carcinoma	2	0	2
		8896 Myxoid leiomyosarcoma	0	1	1

TABLE 6
Type of Diagnosis for Breast Cancer

Type of Diagnosis	Male		Female		Total	
	n	%	n	%	n	%
Death Certificate only	0	0	0	0	0	0
History & Physical exam	0	0	23	3.1	23	3.1
Endoscopy & Radiology	0	0	4	0.5	4	0.5
Surgery & Autopsy (no histologically)	0	0	0	0	0	0
Specific Biochem/Immuno tests	0	0	1	0.1	1	0.1
Cytology or Hematology	0	0	41	5.5	41	5.5
Histologically of Mestastatic	0	0	6	0.8	6	0.8
Histologically of Primary	4	100	670	89.9	674	90
Autopsy with Histology	0	0	0	0	0	0
Total	4	100	745	100	749	100

FIGURE 8
Type of Extension for Breast Cancer

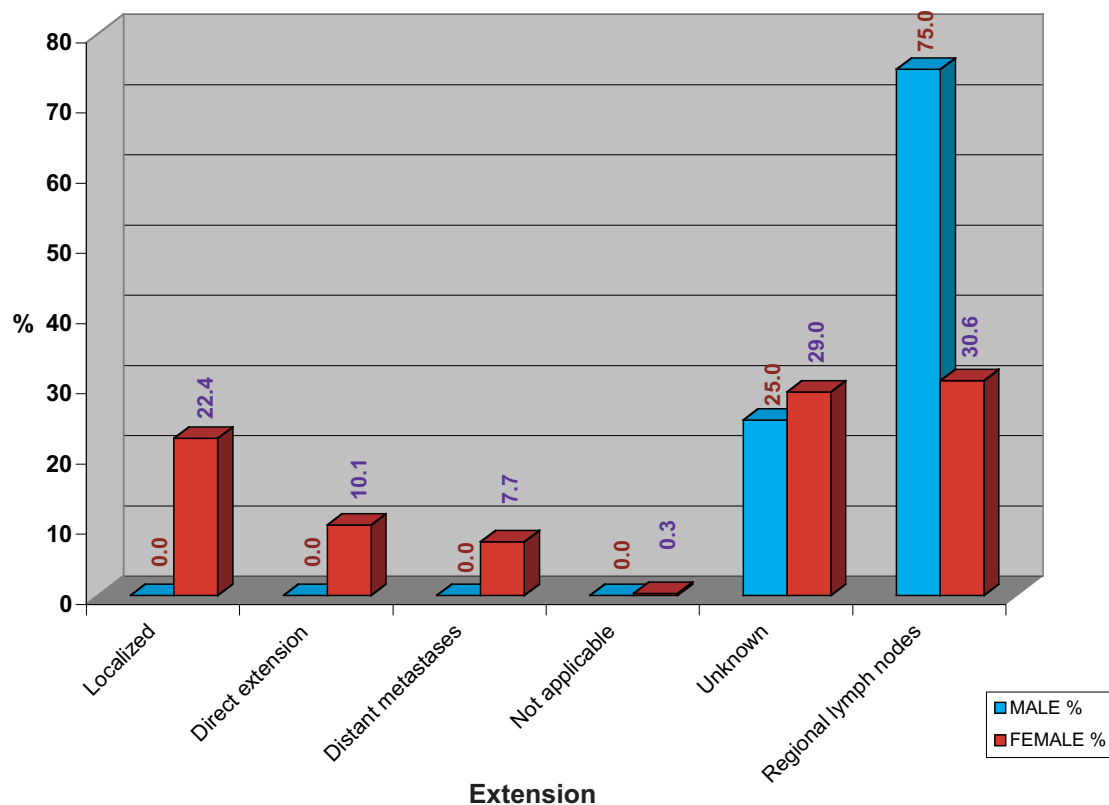


FIGURE 9
Number by Age - Group and Sex for Breast Cancer

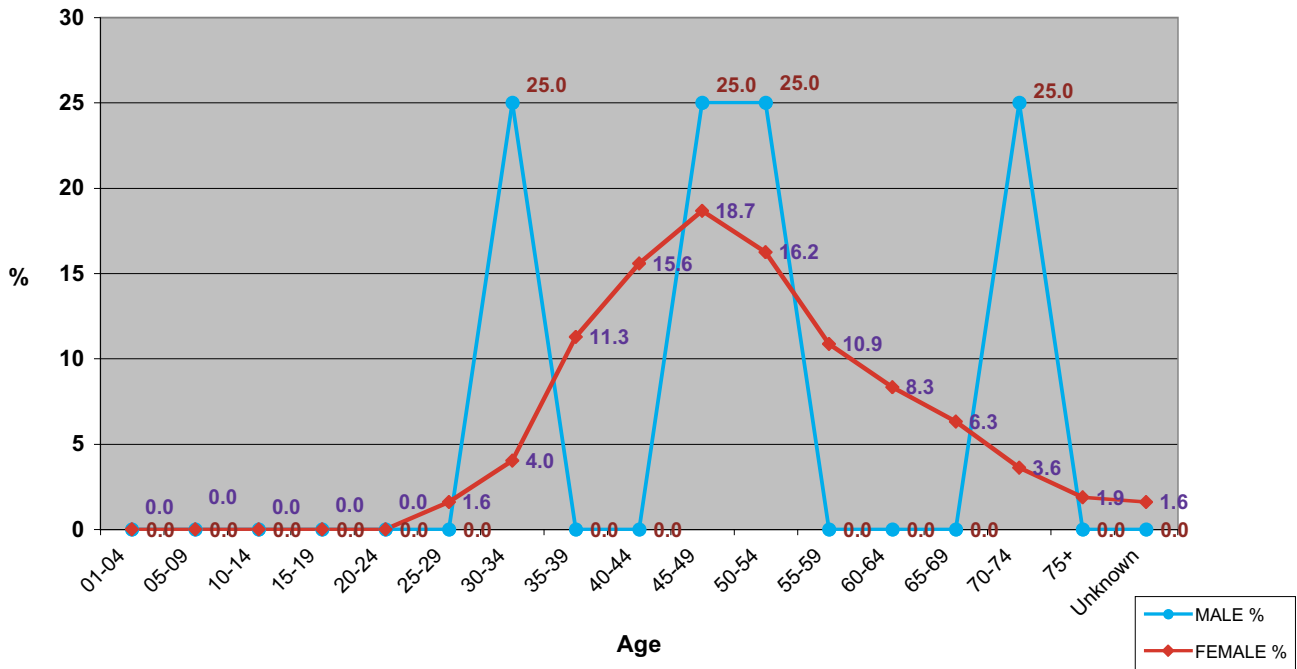


FIGURE 10
Type of Stage for Breast Cancer

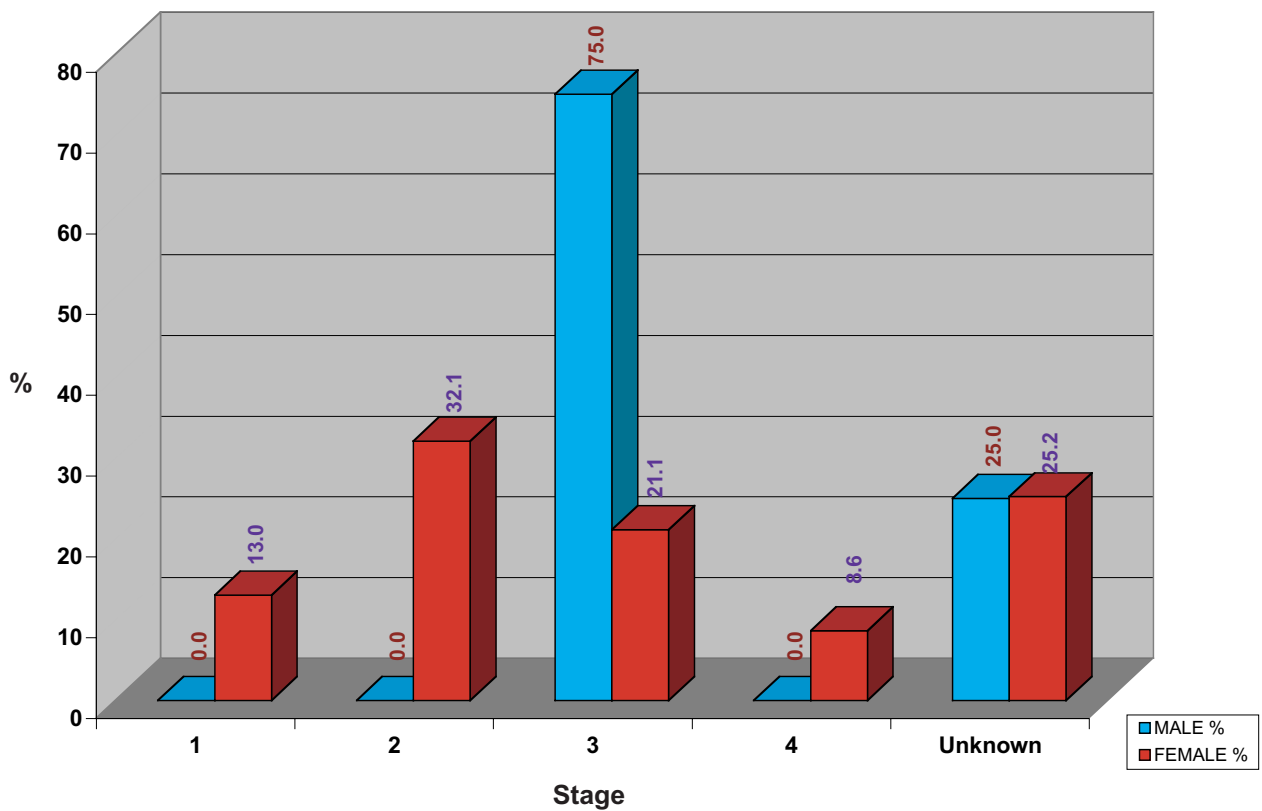


TABLE 7
Method of Treatment for Breast Cancer

Method of Treatment	Male		Female		Total	
	n	%	n	%	n	%
Surgery	0	0	321	43.1	321	42.9
Radiotherapy	1	25	16	2.1	17	2.3
Chemotherapy	2	50	97	13	99	13.2
Hormone	0	0	2	0.3	2	0.3
Surgery + Radiotherapy	0	0	16	2.1	16	2.1
Surgery + Chemotherapy	0	0	83	11.1	83	11.1
Surgery + Hormone	0	0	33	4.4	33	4.4
Radiotherapy + Chemotherapy	0	0	112	15	112	15
Radiotherapy + Hormone	0	0	7	0.9	7	0.9
Chemotherapy + Hormone	0	0	9	1.2	9	1.2
Surgery + Radiotherapy + Chemotherapy	0	0	1	0.1	1	0.1
Surgery + Radiotherapy + Hormone	0	0	1	0.1	1	0.1
Surgery + Chemotherapy + Hormone	1	25	20	2.7	21	2.8
Support	0	0	2	0.3	2	0.3
Other	0	0	3	0.4	3	0.4
Not Recorded	0	0	22	3	22	2.9
Total	4	100	745	100	749	100

TABLE 8
Type of Diagnosis for Cervix Cancer

Type of Diagnosis	Male		Female		Total	
	n	%	n	%	n	%
Death Certificate only	0	0	0	0	0	0
History & Physical exam.	0	0	1	0.2	1	0.2
Endoscopy & Radiology	0	0	1	0.2	1	0.2
Surgery & Autopsy (no histologically)	0	0	0	0	0	0
Specific Biochem/Immuno tests	0	0	0	0	0	0
Cytology or Hematology	0	0	4	1	4	1
Histologically of Metastasis	0	0	2	0.5	2	0.5
Histologically of Primary	0	0	404	98.1	404	98.1
Autopsy with Histology	0	0	0	0	0	0
Total	0	0	412	100	412	100

FIGURE 11
Type of Extension for Cervix Cancer

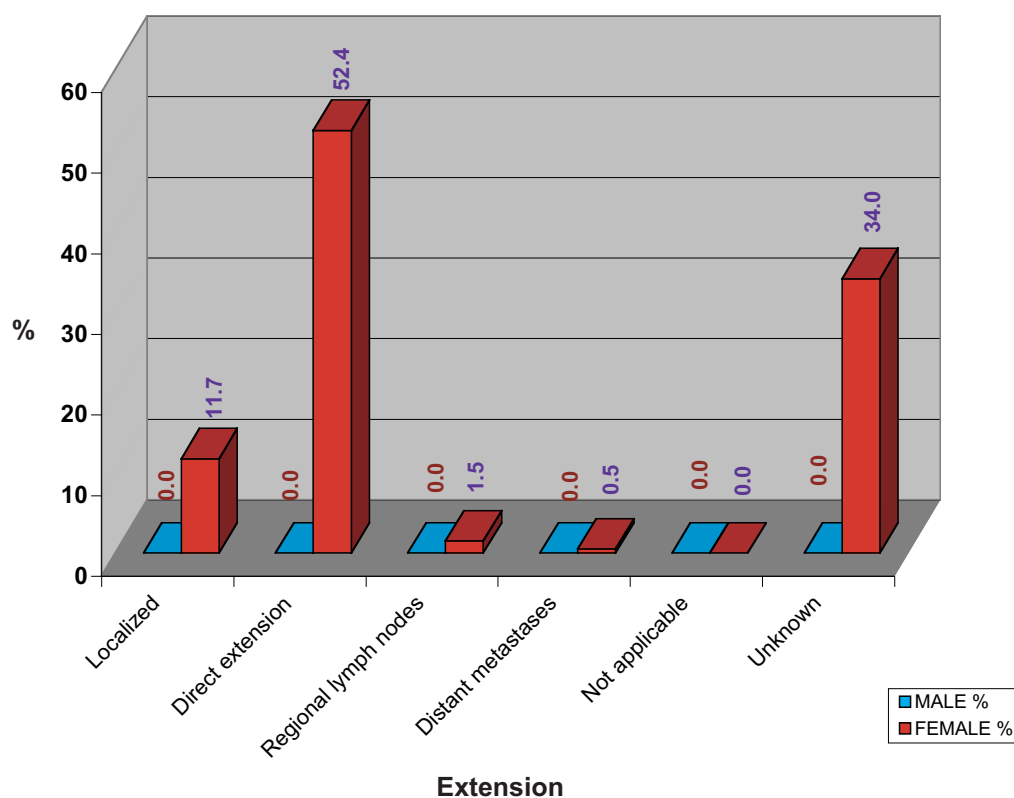


FIGURE 12
Number by Age - Group and Sex for Cervix Cancer

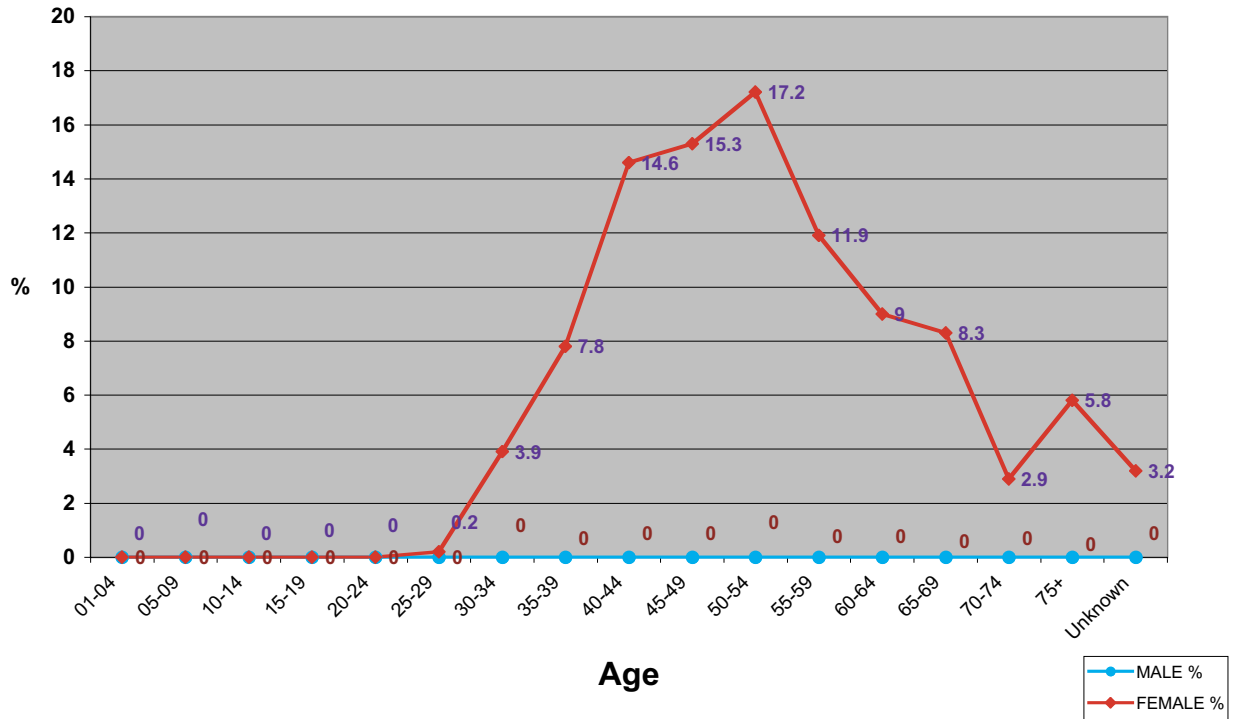


FIGURE 13
Type of Stage for Cervix Cancer

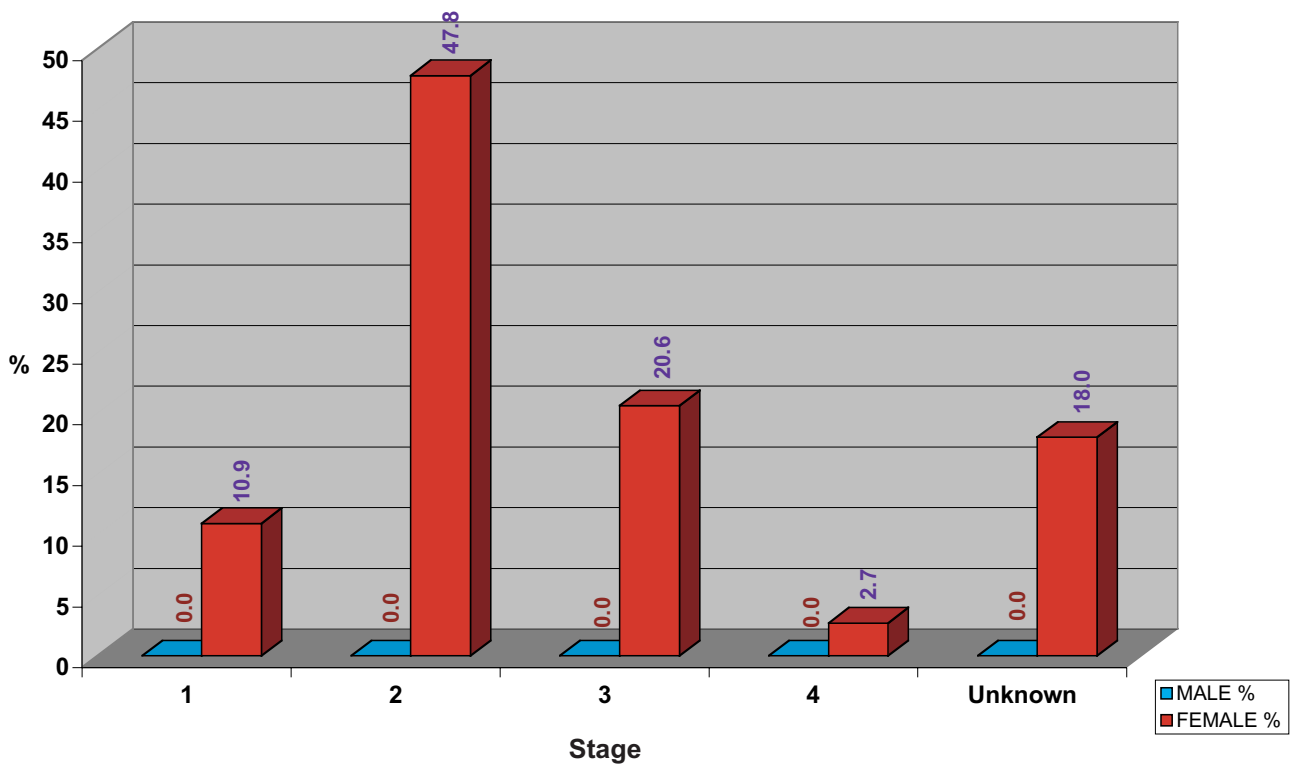


TABLE 9
Method of Treatment for Cervix Cancer

Method of Treatment	Male		Female		Total	
	n	%	n	%	n	%
Surgery	0	0	34	8.3	34	8.3
Radiotherapy	0	0	171	41.5	171	41.5
Chemotherapy	0	0	4	1	4	1
Hormone	0	0	0	0	0	0
Surgery + Radiotherapy	0	0	14	3.4	14	3.4
Surgery + Chemotherapy	0	0	1	0.2	1	0.2
Surgery + Hormone	0	0	0	0.0	0	0
Radiotherapy + Chemotherapy	0	0	11	2.7	11	2.7
Radiotherapy + Hormone	0	0	0	0	0	0
Chemotherapy + Hormone	0	0	0	0	0	0
Surgery + Radiotherapy + Chemotherapy	0	0	3	0.7	3	0.7
Surgery + Radiotherapy + Hormone	0	0	0	0	0	0
Surgery + Chemotherapy + Hormone	0	0	0	0	0	0
Support	0	0	136	33	136	33
Other	0	0	18	4.4	18	4.4
Not Recorded	0	0	20	4.9	20	4.9
Total	0	0.0	412	100	412	100

TABLE 10
Type of Diagnosis for Lung Cancer

Type of Diagnosis	Male		Female		Total	
	n	%	n	%	n	%
Death Certificate only	0	0	0	0	0	0
History & Physical exam.	2	1.1	1	0.9	3	1
Endoscopy & Radiology	31	16.4	11	10.1	42	14.1
Surgery & Autopsy (no histologically)	0	0	1	0.9	1	0.3
Specific Biochem/Immuno tests	0	0	1	0.9	1	0.3
Cytology or Hematology	43	22.8	24	22	67	22.5
Histologically of Metastasis	17	9	14	12.8	31	10.4
Histologically of Primary	105	50.8	57	52.3	153	51.3
Autopsy with Histology	0	0	0	0	0	0
Total	198	100	109	100	307	100

FIGURE 14
Type of Extension for Lung Cancer

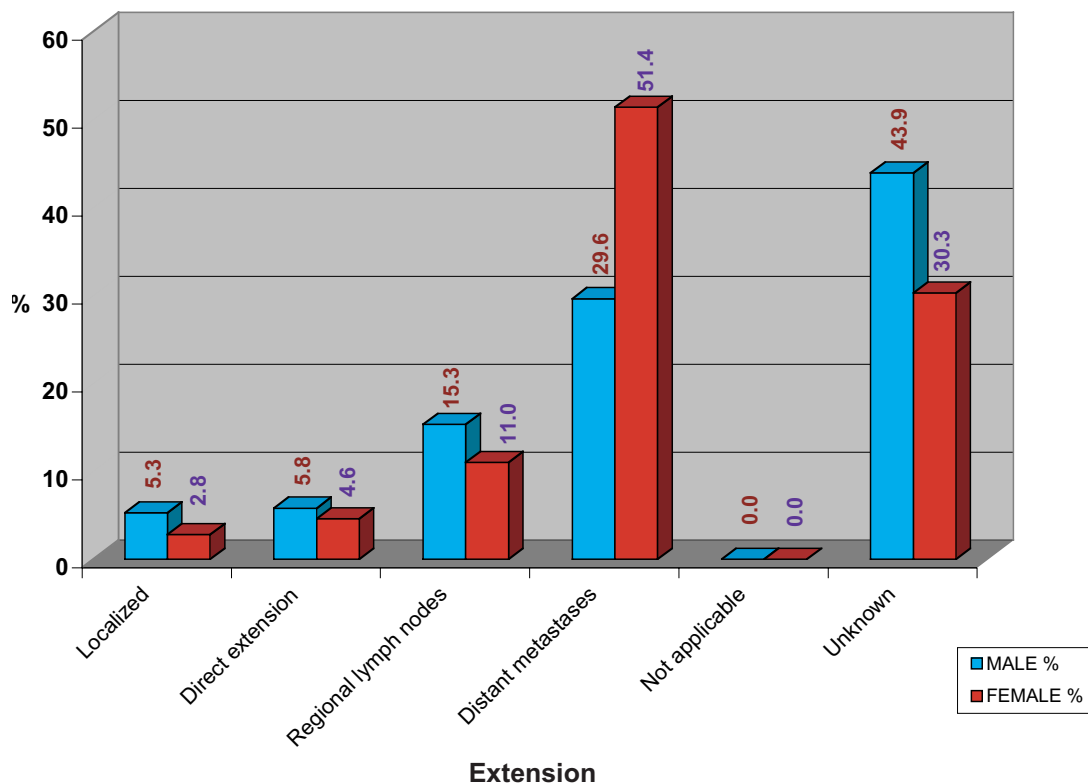


FIGURE 15
Number by Age - Group and Sex for Lung Cancer

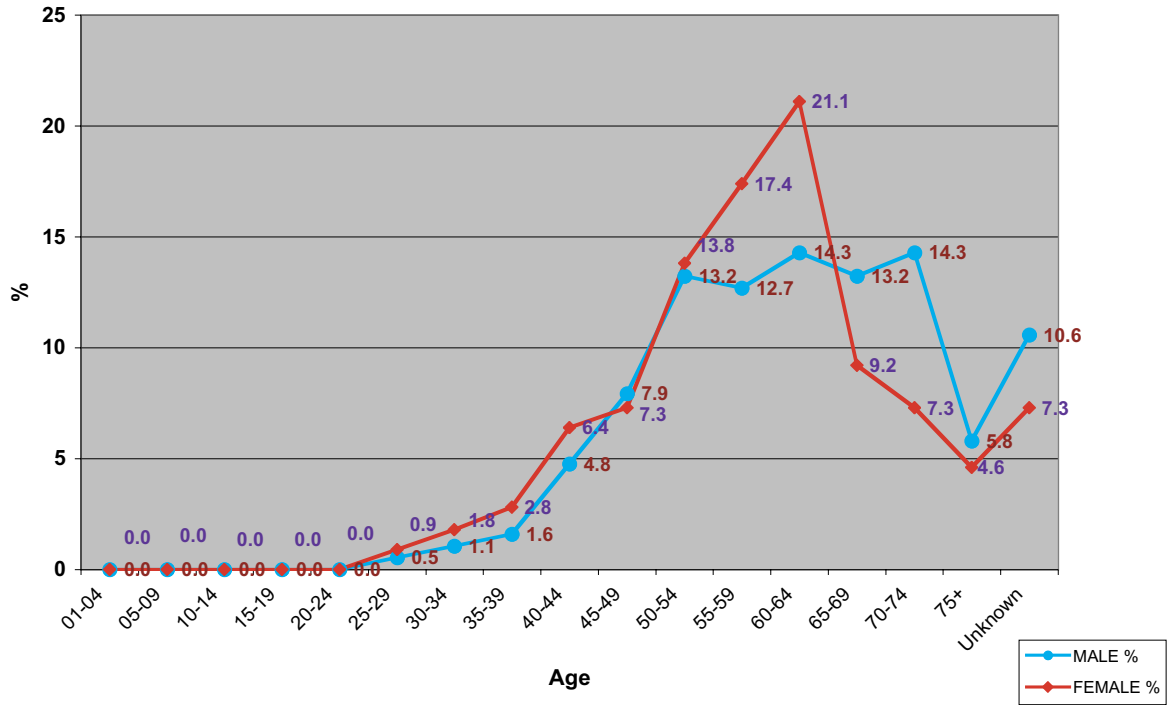


FIGURE 16
Type of Stage for Lung Cancer

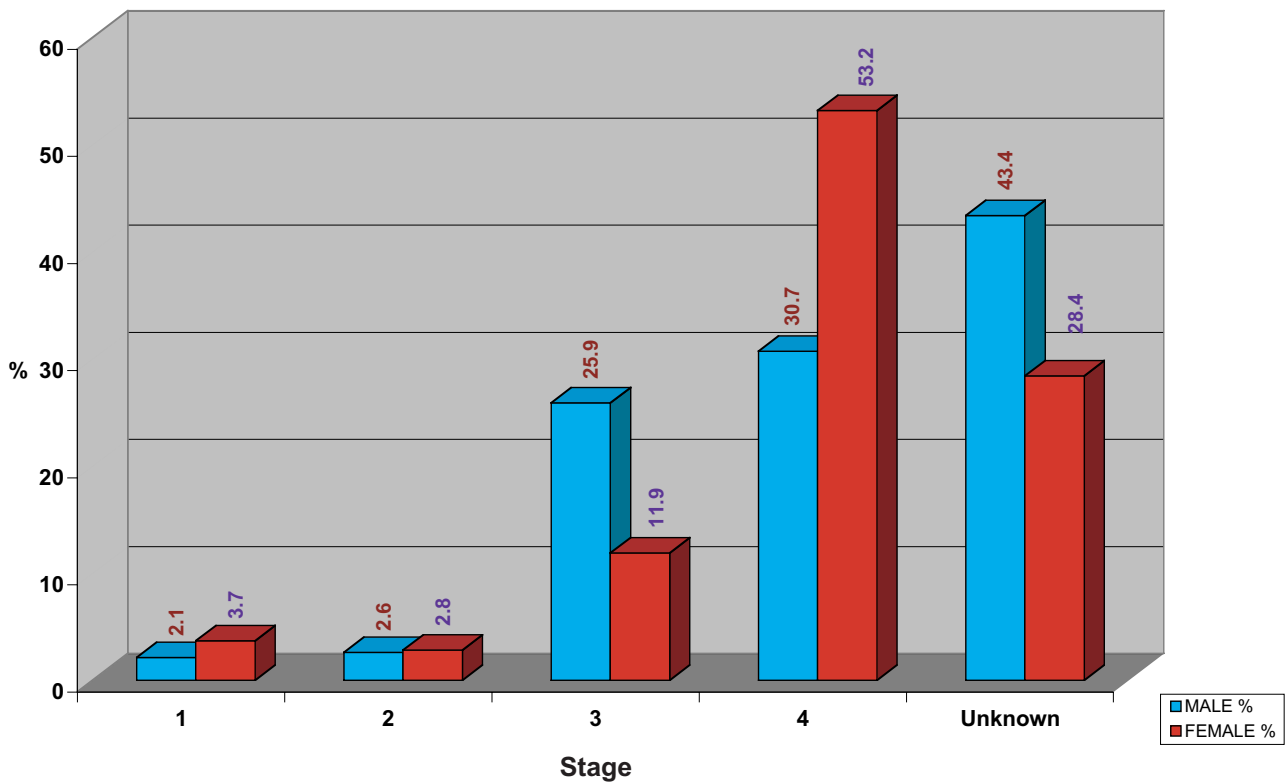


TABLE 11
Method of Treatment for Lung Cancer

Method of Treatment	Male		Female		Total	
	n	%	n	%	n	%
Surgery	11	5.6	10	9.2	21	6.8
Radiotherapy	14	7.1	3	2.8	17	5.5
Chemotherapy	52	26.3	30	27.5	82	26.7
Hormone	0	0	0	0	0	0
Surgery + Radiotherapy	1	0.5	0	0	1	0.3
Surgery + Chemotherapy	4	2	6	5.5	10	3.3
Surgery + Hormone	0	0	0	0	0	0
Radiotherapy + Chemotherapy	8	4	3	2.8	11	3.6
Radiotherapy + Hormone	0	0	0	0	0	0
Chemotherapy + Hormone	0	0	0	0	0	0
Surgery + Radiotherapy + Chemotherapy	0	0	1	0.9	1	0.3
Surgery + Radiotherapy + Hormone	0	0	0	0	0	0
Surgery + Chemotherapy + Hormone	0	0	0	0	0	0
Support	71	35.9	38	34.9	109	35.5
Other	21	10.6	6	5.5	27	8.8
Not Recorded	16	8.1	12	11	28	9.1
Total	198	100	109	100	307	100

TABLE 12
Type of Diagnosis for Liver Cancer

Type of Diagnosis	Male		Female		Total	
	n	%	n	%	n	%
Death Certificate only	0	0	0	0	0	0
History & Physical exam.	3	1.8	1	1.4	4	1.7
Endoscopy & Radiology	116	68.6	42	60.9	158	65.8
Surgery & Autopsy (no histologically)	13	7.7	8	11.6	21	8.8
Specific Biochem/Immuno tests	0	0	6	8.7	1	0.4
Cytology or Hematology	12	7.1	0	0	18	7.5
Histologically of Metastasis	2	1.2	0	0	2	0.8
Histologically of Primary	25	13.6	12	17.4	35	14.6
Autopsy with Histology	0	0	0	0	0	0
Total	171	100	69	100	240	100

FIGURE 17
Type of Extension for Liver Cancer

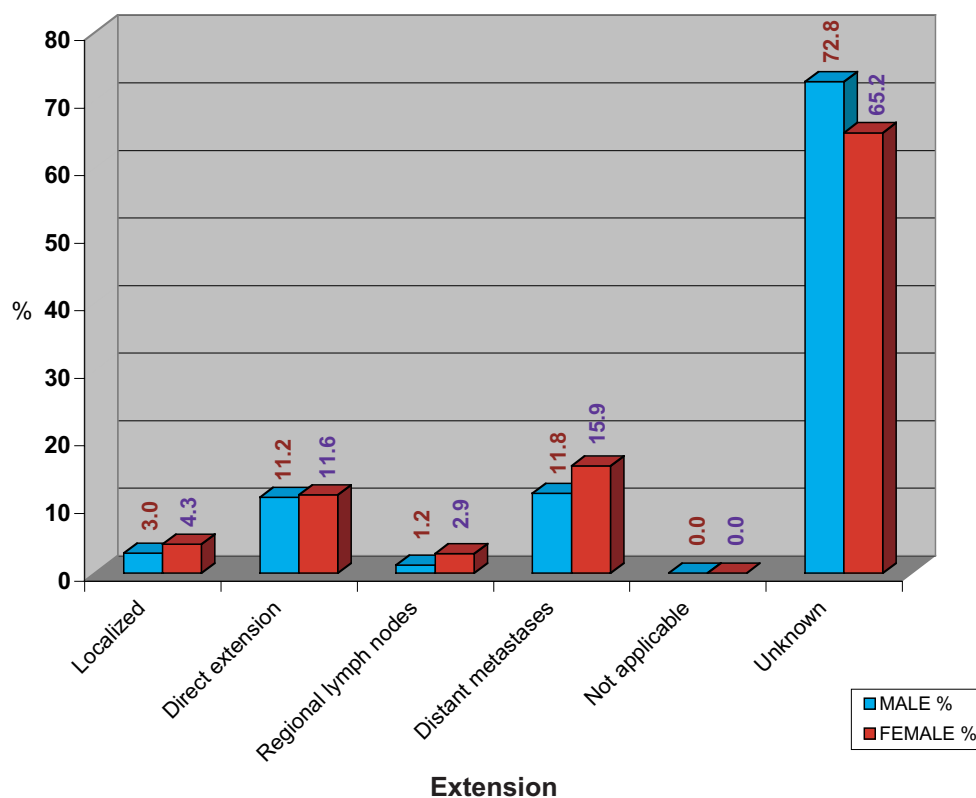


FIGURE 18
Number by Age - Group and Sex for Liver Cancer

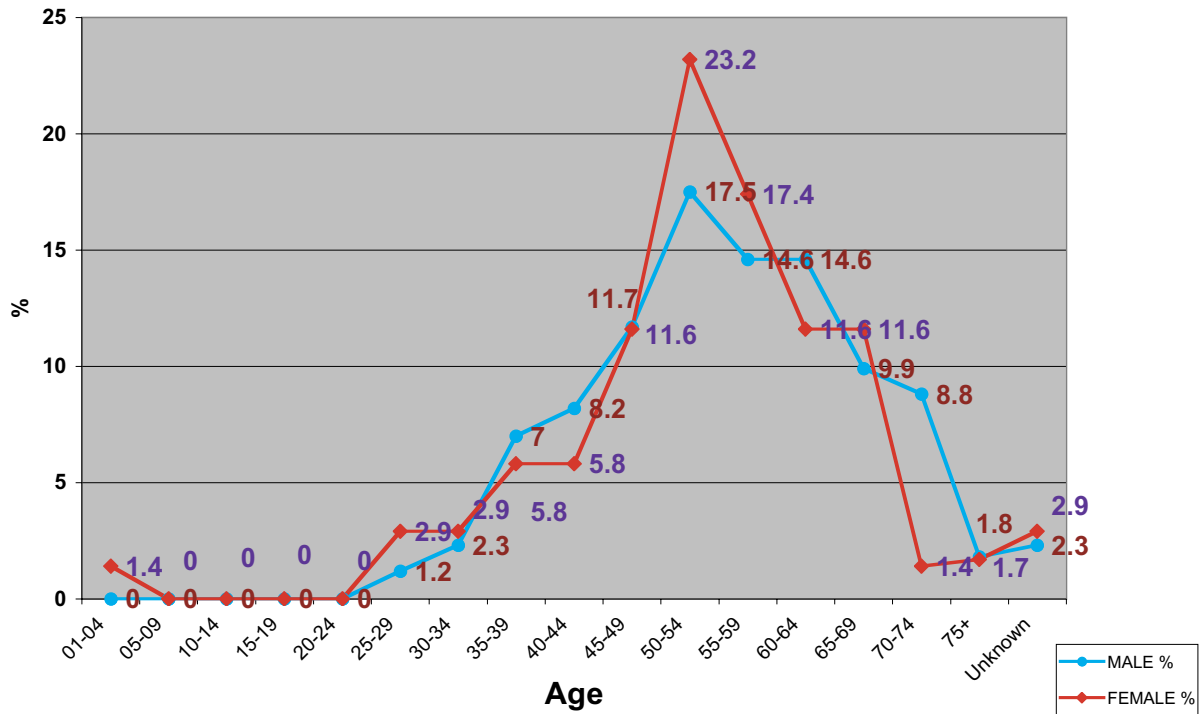


FIGURE 19
Type of Stage for Liver Cancer

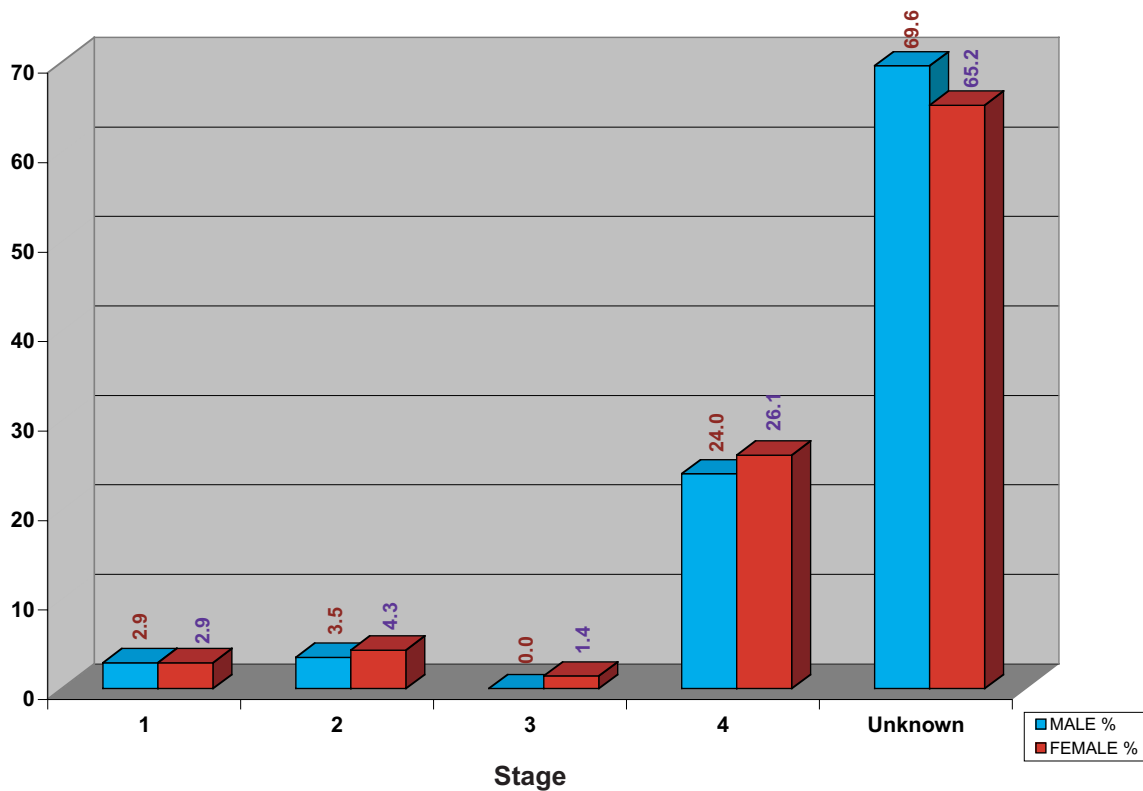


TABLE 13
Method of Treatment for Liver Cancer

Method of Treatment	Male		Female		Total	
	n	%	n	%	n	%
Surgery	12	7	2	2.9	14	5.8
Radiotherapy	1	0.6	0	0	1	0.4
Chemotherapy	54	31.6	18	26.1	72	30
Hormone	0	0	0	0	0	0
Surgery + Radiotherapy	3	1.8	0	0	3	1.3
Surgery + Chemotherapy	6	3.5	1	1.4	7	2.9
Surgery + Hormone	0	0	0	0	0	0
Radiotherapy + Chemotherapy	2	1.2	0	0	2	0.8
Radiotherapy + Hormone	0	0	0	0	0	0
Chemotherapy + Hormone	0	0	0	0	0	0
Surgery + Radiotherapy + Chemotherapy	0	0	1	1.4	1	0.4
Surgery + Radiotherapy + Hormone	0	0	0	0	0	0
Surgery + Chemotherapy + Hormone	0	0	0	0	0	0
Support	79	46.2	42	60.9	121	50.4
Other	8	4.7	2	2.9	10	4.2
Not Recorded	6	3.5	3	4.3	9	3.8
Total	171	100	69	100	240	100

TABLE 14
Type of Diagnosis for Colon and Rectum Cancer

Type of Diagnosis	Male		Female		Total	
	n	%	n	%	n	%
Death Certificate only	0	0	0	0	0	0
History & Physical exam.	4	2.8	3	2.4	7	2.6
Endoscopy & Radiology	6	4.3	2	1.6	8	3
Surgery & Autopsy (no histologically)	0	0	0	0	0	0
Specific Biochem/Immuno tests	0	0	0	0	0	0
Cytology or Hematology	0	0	0	0	0	0
Histologically of Metastasis	0	0	5	4	5	1.9
Histologically of Primary	131	92.9	115	92	246	92.5
Autopsy with Histology	0	0.0	0	0	0	0
Total	141	100	125	100	266	100

FIGURE 20
Type of Extension for Colon and Rectum Cancer

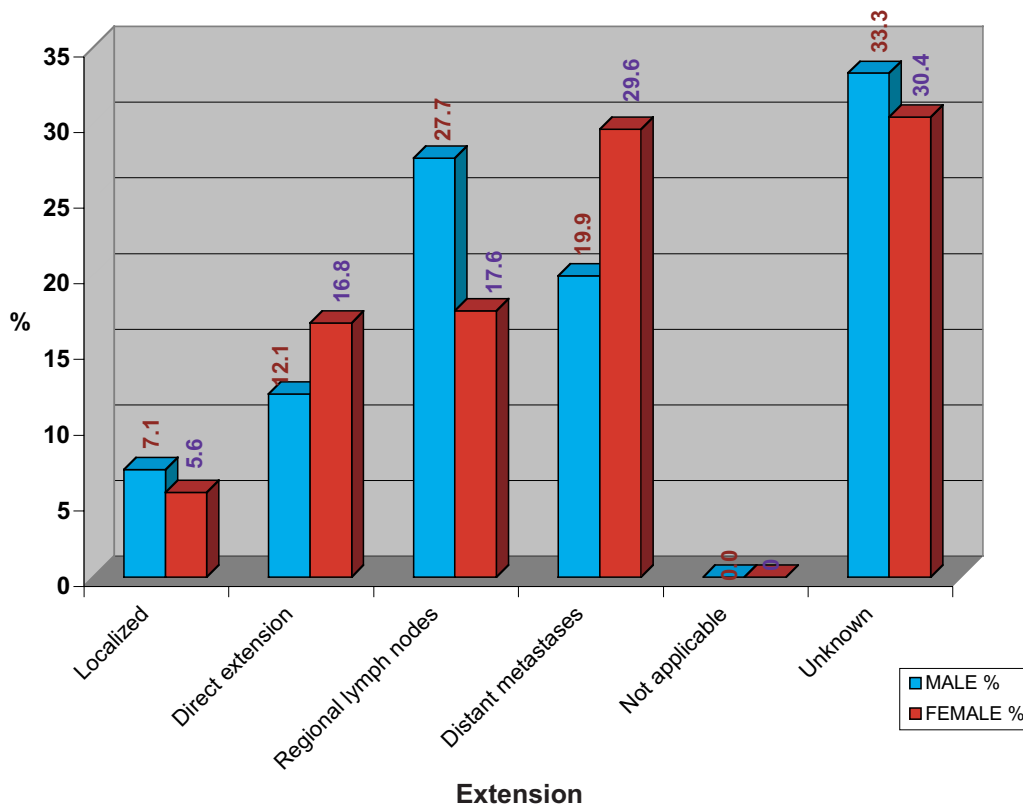


FIGURE 21
Number by Age - Group and Sex for Colon and Rectum Cancer

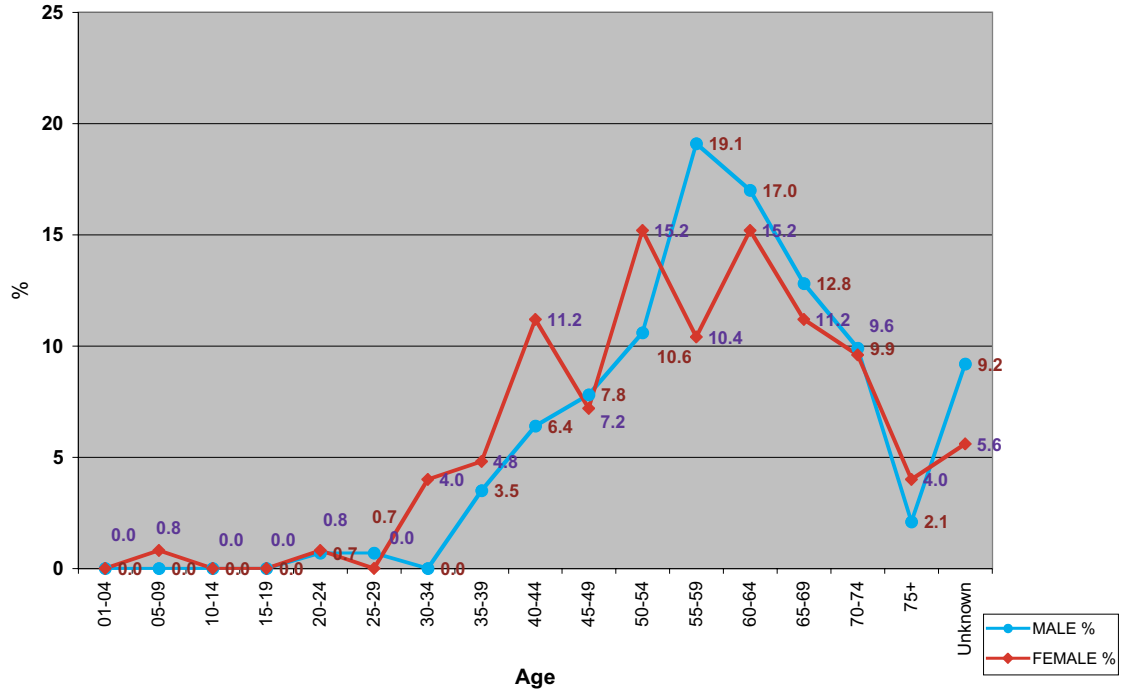


FIGURE 22
Type of Stage for Colon and Rectum Cancer

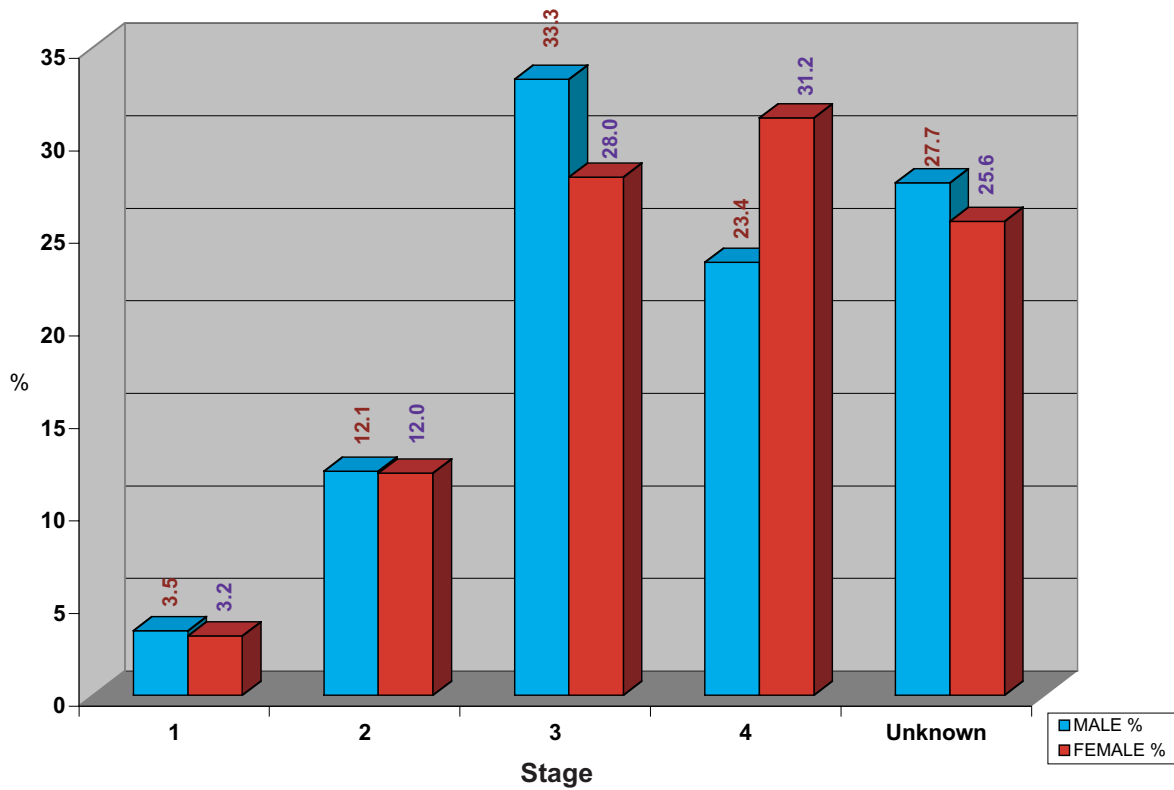


TABLE 15
Method of Treatment for Colon and Rectum Cancer

Method of Treatment	Male		Female		Total	
	n	%	n	%	n	%
Surgery	50	35.5	48	38.4	98	36.8
Radiotherapy	9	6.4	7	5.6	16	6
Chemotherapy	7	5	18	14.4	25	9.4
Hormone	0	0	0	0	0	0
Surgery + Radiotherapy	8	5.7	6	4.8	14	5.3
Surgery + Chemotherapy	26	18.4	22	17.6	48	18
Surgery + Hormone	0	0	0	0	0	0
Radiotherapy + Chemotherapy	6	4.3	2	1.6	8	3
Radiotherapy + Hormone	0	0	0	0	0	0
Chemotherapy + Hormone	0	0	0	0	0	0
Surgery + Radiotherapy + Chemotherapy	2	1.4	2	1.6	4	1.5
Surgery + Radiotherapy + Hormone	0	0	0	0	0	0.0
Surgery + Chemotherapy + Hormone	0	0	0	0	0	0.0
Support	21	14.9	16	12.8	37	13.9
Other	9	6.4	2	1.6	11	4.1
Not Recorded	3	2.1	2	1.6	5	1.9
Total	141	100	125	100	266	100