

Chapter II

19

THYROID

ICD-10 C73

Hutcha Sriplung, M.D.

Patravoot Vatanasapt, M.D.

Incidence

Compared with other parts of the world, Thailand is among the low incidence countries for thyroid cancer. It is obvious that thyroid cancer is the cancer of females. The estimated incidence rate of thyroid cancer in Thailand is 1.1 and 4.1 per 100 000 population in males and females respectively. The highest incidence of thyroid cancer is observed in the southern region (Songkhla). The age-specific incidence rates reach a peak or plateau at early adulthood (Figure 2.19.1). The declining trend with age in Nakhon Phanom and Udon Thani is observed (Figure 2.19.2). The lack of treatment facilities may lead to under-ascertainment of cases in the two areas.

There are two major types of thyroid cancers, papillary and follicular carcinoma (Figure 2.19.3).

In this period, papillary carcinoma exceeds follicular carcinoma in all registries. The ratio of papillary to follicular carcinoma in females varies from 12.9:1 in Udon Thani to 2.2:1 in Chiang Mai. It is approximately 3:1 to 7:1 in other registries. The ratio is different from that reported in the periods of 1988-1991 and 1992-1994 in the northern and northeastern regions where follicular carcinoma was previously predominant. The reverse is observed in the periods 1995-1997 to 1998-2000. The phenomenon may be the consequence of iodine supplement programme in salt and fish source throughout the country since 1989. Papillary carcinoma is more prevalent in areas sufficient in dietary iodine (William *et al.*, 1977) though it is not evident in some areas such as a report from Denmark (Sehestedt *et al.*, 2006).

Figure 2.19.1 Thyroid cancer in different regions, 1998-2000

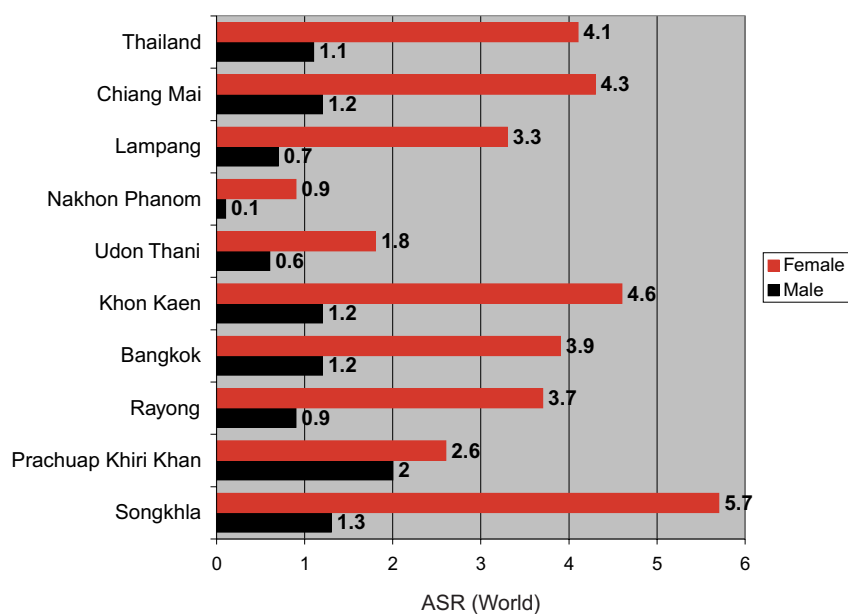


Figure 2.19.2 Age-specific incidence rates of thyroid cancer, 1998-2000

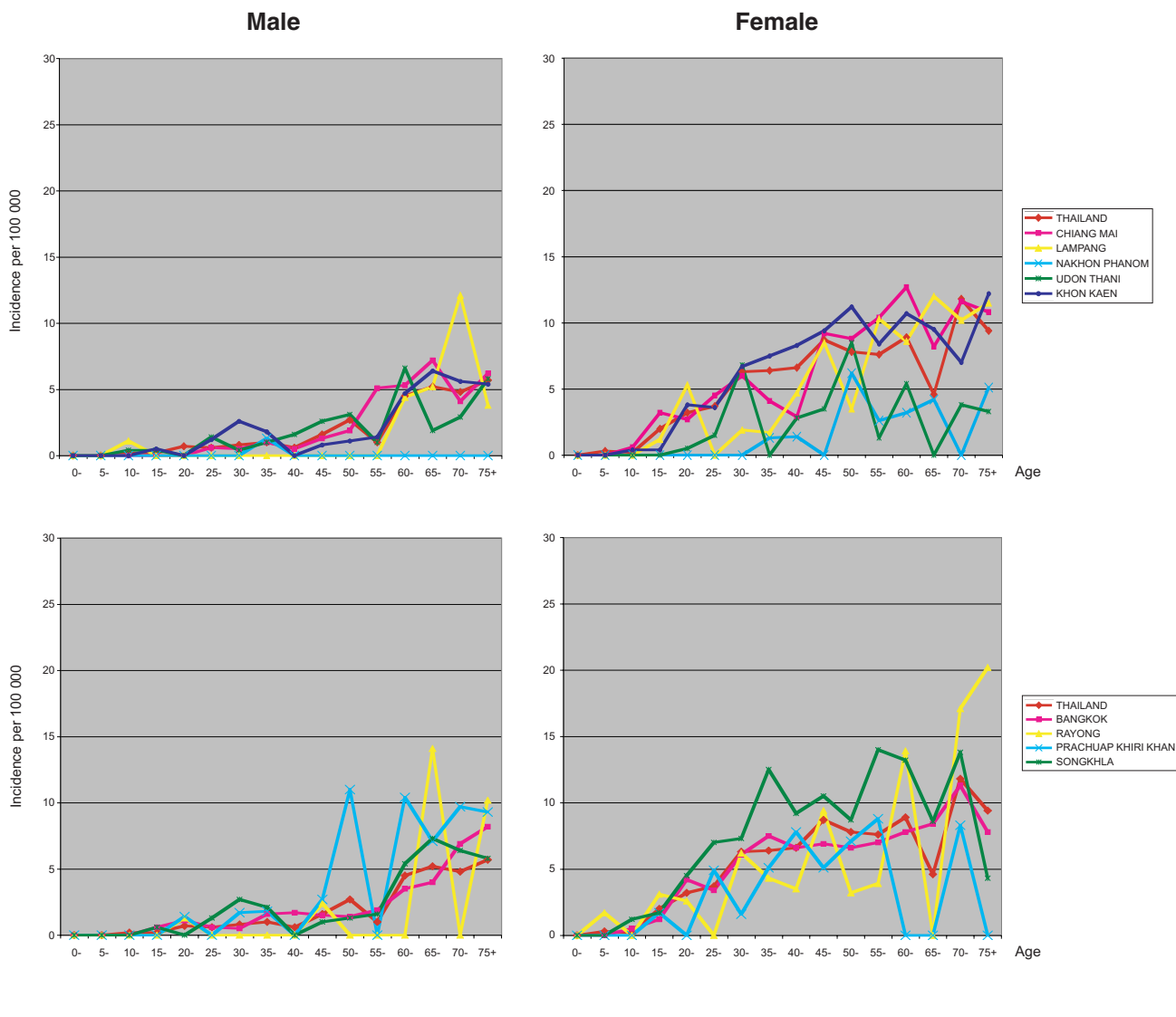


Figure 2.19.3 Histological types of thyroid cancer, 1998-2000

