

Chapter II

15

CORPUS UTERI

ICD-10 C54

Surathat Pongnikorn, M.D.
Nimit Martin, M.D.
Nilubol Ruanroadroong, M.D.
Karnchana Daoprasert, B.Sc.

Incidence

Cancer of the uterus is the seventh most common malignancy of women with 189 000 new cases and 45 000 deaths occurring worldwide each year; about 60% of these occur in more developed countries. The highest incidence rates are in the USA, Hawaii: Hawaiian (ASR = 26.6) (from CIV vol. VIII), Canada, Europe and Australia. Low incidence rates occur in Africa and Asia (Bernard *et al.*, 2003).

In Thailand over the period 1998-2000, cancer of the corpus uteri was the tenth common cancer for women, the estimated number of new cancer cases were 745 accounting about 2.2% of all female cancers. The estimated average age-standardized incidence rates of the corpus uteri cancer was 2.8 per 100 000 female population.

Age-specific incidence rate (incidence by age group) increased sharply with peak at age group 55-59.

The estimated number of new cancer cases and estimated age-standardized incidence rates were 658 new cases (ASR = 2.9) in 1990 (Vatanasapt *et al.*, 1993), 703 cases (ASR = 2.9) in 1993 (Deerasamee *et al.*, 1999), 886 cases (ASR = 2.9) in 1996 (Sriplung *et al.*, 2003) and 745 cases (ASR = 2.8) in this study.

The highest incidence rate was found in Bangkok (ASR = 3.9) followed by Chiang Mai (ASR = 3.5), Song Khla (ASR = 3.3), Lampang (ARS = 3.0) and Khon Kaen (ASR = 2.5) while the ASR in other registries were less than 2.5.

In this study, the highest incidence rate was in Central region (ASR = 5.9) followed by North-eastern region (ASR = 3.7) and the Southern region (ASR = 2.9) while the Northern part had the lowest incident (ASR = 2.4).

Histological verification of corpus uteri cancer varied from 76% to 98%. The DCO verifica-

Figure 2.15.1 *Corpus uteri cancer in different regions, 1998-2000*

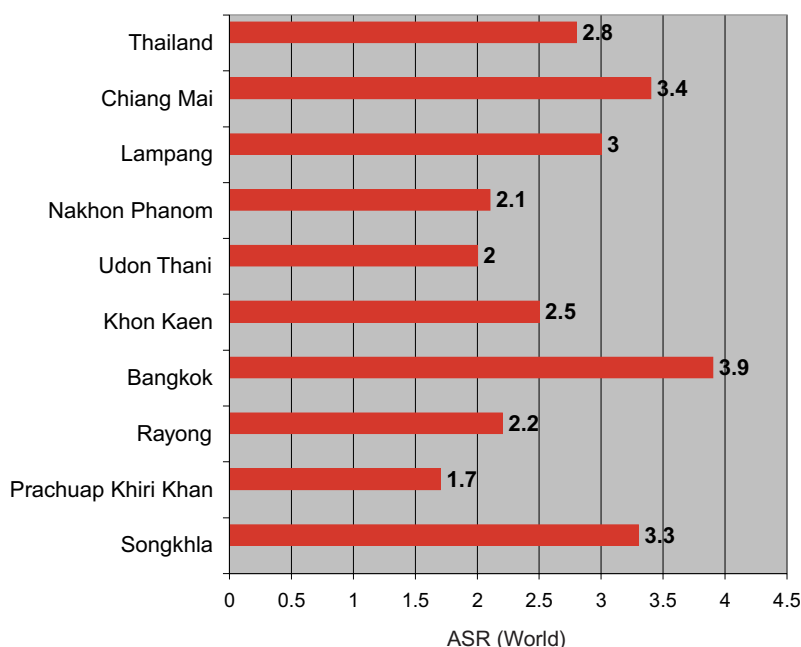
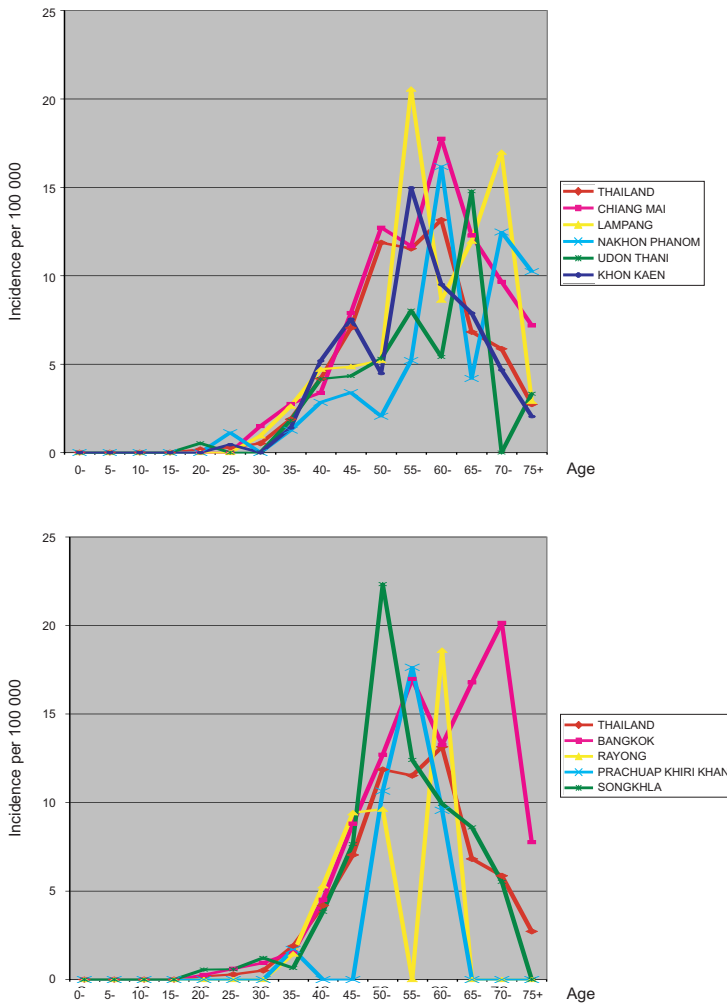


Figure 2.15.2 Age-specific incidence rates of corpus uteri cancer, 1998-2000



tion varied from 0.0% to 12.0%.

Tumors of the corpus uteri are predominantly adenocarcinoma arising from endometrium or lining of uterus.

Risk factors

Unopposed estrogen therapy is associated the risk of cancer of corpus uteri, granulosa theca cell and polycystic ovary. Tamoxifen as a therapeutic or chemopreventive agent in breast cancer is also a risk factor for corpus uteri cancer. The disease is clearly associated with obesity, diabetes and hypertension.