

HOSPITAL - BASED

# CANCER REGISTRY

2005



NATIONAL CANCER INSTITUTE  
DEPARTMENT OF MEDICAL SERVICES  
MINISTRY OF PUBLIC HEALTH

THAILAND

Edited by Pattarawin Attasara, M.D.

ISSN 974-422-243-3



# **CANCER REGISTRY 2005**

**National Cancer Institute  
Department of Medical Services  
Ministry of Public Health  
Thailand**

*Edited by*  
**Dr. Pattarawin Attasara**

ISSN 974-7980-57-6

## NATIONAL CANCER INSTITUTE REGISTRY STAFFS

*Consultant :*

Asst. Prof. Visoot Vootiprux

*Editor :*

Dr. Pattarawin Attasara

*Office Staffs :*

Mrs. Rangsiya Buasom  
Mrs. Jidapa Khukhiang  
Mrs. Phikul Panchaem  
Mr. Somchoke Hongtong  
Ms. Pannaporn Kusol  
Ms. Penpak Hongjet  
Ms. Maliwan Saroj

## INTRODUCTION

This annual 2005 report of new cancer registered in The National Cancer Institute is the hospital base report. The Topographic and The Morphologic code of cancer are based on The International Classification of Disease for Oncology, Third Edition. It is hope that the data many be useful for those who are interest in oncology and those faculty member who are planning for human resource, personal development and research on oncology.

This report has been made possible by the collaboration of all departments in the hospital. Thanks to all faculty members for their collaboration and also for all registry staffs, consultant, and volunteer in the record department for their diligence and untiring enthusiasm in the performance of their duties in processing the data upon which this volume is based on.



**Dr. Thiravud Khuhaprema, M.D., F.I.C.S.**

*Director, National Cancer Institute,  
Bangkok, Thailand*



## CONTENTS

<b>Introduction</b>	<b>A</b>
<b>Table 1</b> <b>Number of Patients</b>	<b>1</b>
<b>Table 2</b> <b>The Most Common Cancers : Males</b>	<b>1</b>
<b>Table 3</b> <b>The Most Common Cancers : Females</b>	<b>2</b>
<b>Table 4</b> <b>Type of Diagnosis of Cancer Site of All Cancer</b>	<b>2</b>
<b>Table 5</b> <b>The Type of Extension of Cancer of All Cancer</b>	<b>4</b>
<b>Table 6</b> <b>Number by Age - Group and Sex for All Cancer</b>	<b>6</b>
<b>Table 7</b> <b>Method of Treatment in Cancer of All Cancer</b>	<b>8</b>
<b>Table 8</b> <b>Number of Cases by Age - Group in Males</b>	<b>9</b>
<b>Table 9</b> <b>Number of Cases by Age - Group in Females</b>	<b>10</b>
<b>Table 10</b> <b>Pathology According to Sites</b>	<b>11-19</b>
<b>Table 11</b> <b>Number by Age - Group and Sex for Colon and Rectum</b>	<b>20</b>
<b>Table 12</b> <b>Basis of Diagnosis of Colon and Rectum</b>	<b>21</b>
<b>Table 13</b> <b>The Type of Extension in Colon and Rectum</b>	<b>21</b>
<b>Table 14</b> <b>Stage of Colon and Rectum</b>	<b>22</b>
<b>Table 15</b> <b>Method of Treatment of All Patients Colon and Rectum</b>	<b>22</b>
<b>Table 16</b> <b>Number by Age - Group and Sex for Liver</b>	<b>23</b>
<b>Table 17</b> <b>Basis of Diagnosis of Liver Cancer</b>	<b>24</b>
<b>Table 18</b> <b>The Type of Extension in Liver Cancer</b>	<b>24</b>
<b>Table 19</b> <b>Stage of Liver Cancer</b>	<b>25</b>
<b>Table 20</b> <b>Method of Treatment of All Patients Liver</b>	<b>25</b>
<b>Table 21</b> <b>Number by Age - Group and Sex for Lung</b>	<b>26</b>
<b>Table 22</b> <b>Basis of Diagnosis of Lung Cancer</b>	<b>27</b>
<b>Table 23</b> <b>The Type of Extension in Liver Cancer</b>	<b>27</b>
<b>Table 24</b> <b>Stage of Lung Cancer</b>	<b>28</b>

## CONTENTS

Table 25	Method of Treatment of All Patients Lung	28
Table 26	Number by Age - Group and Sex for Breast	29
Table 27	Basis of Diagnosis of Breast Cancer	30
Table 28	The Type of Extension in Breast Cancer	30
Table 29	Stage of Breast Cancer	31
Table 30	Method of Treatment of All Patients Breast	31
Table 31	Number by Age - Group and Sex for Cervix	32
Table 32	Basis of Diagnosis of Cervix Cancer	33
Table 33	The Type of Extension in Cervix Cancer	33
Table 34	Stage of Cervix Cancer	34
Table 35	Method of Treatment of All Patients Cervix	34
Figure 1	Type of Diagnosis of Cancer Site of All Cancer	3
Figure 2	Type of Extension of Cancer of All Cancer	5
Figure 3	Number by Age - Group and Sex for All Cancer	7
Figure 4	Distribution of Cancer Patients by Region	35

**TABLE 1**  
**Number of Patients**

Type of Patient	No. of Cases	Percent
Total number of new patients	26,558	100
Total number of new patients with malignancies	2,925	11

**TABLE 2**  
**The Most Common Cancers : Males**

No.	Site	ICD 0	No. of Cases
1	Traches, Bronchus & Lung	C33 - C34	215
2	Liver and Intrahepatic bile ducts	C22	168
3	Colon + Rectum, Rectosigmoid and Anus	C18 - C21	117
4	Lumph nodes	C77	55
5	Nasopharynx	C11	50
6	Tongue	C01 - C02	43
7	Esophagus	C15	33
8	Skin	C43 - C44	27
9	Stomach	C16	25
10	Oropharynx	C09 - C10	18

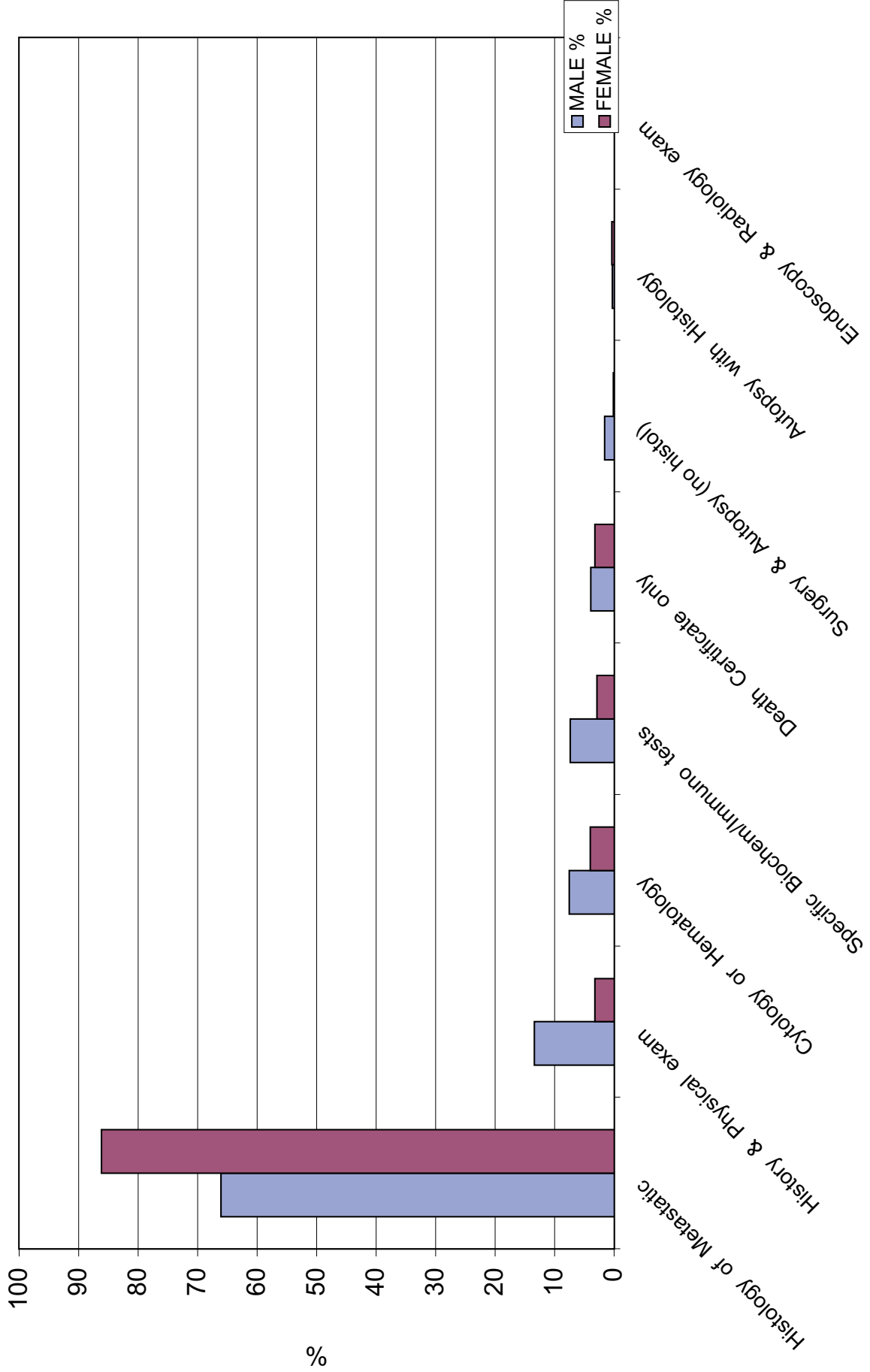
**TABLE 3**  
**The Most Common Cancers : Females**

No.	Site	ICD 0	No. of Cases
1	Breast	C50	679
2	Cervix	C53	397
3	Colon, Rectum, Rectosigmoid and Anus	C18 - C21	115
4	Trachea, Bronchus & Lung	C33 - C34	110
5	Ovary	C56	95
6	Liver	C22	63
7	Corpus uteri	C54	51
8	Lymph nodes	C77	51
9	Skin	C44	30
10	Thyroid gland	C73	30

**TABLE 4**  
**Type of Diagnosis of Cancer Site in All Cancer**

Type of Diagnosis	Male		Female		Total	
	n	%	n	%	n	%
Death Certificate only	41	4	60	3.2	101	3.5
History & Physical exam	137	13.3	61	3.2	198	6.8
Endoscopy & Radiology exam	0	0	1	0.1	1	0.1
Surgery & Autopsy (no histol)	16	1.6	1	0.1	17	0.6
Specific Biochem/Immuno tests	75	7.3	53	2.8	128	4.4
Cytology or Hematology	77	7.5	75	4	152	5.2
Histology of Metastatic	677	66	1,636	86.2	2,313	79.1
Histology of Primary	0	0	0	0	0	0
Autopsy with Histology	3	0.3	7	0.4	10	0.3
Unknown	0	0	0	0	0	0
<b>All Patients</b>	<b>1,027</b>	<b>100</b>	<b>1,899</b>	<b>100</b>	<b>2,926</b>	<b>100</b>

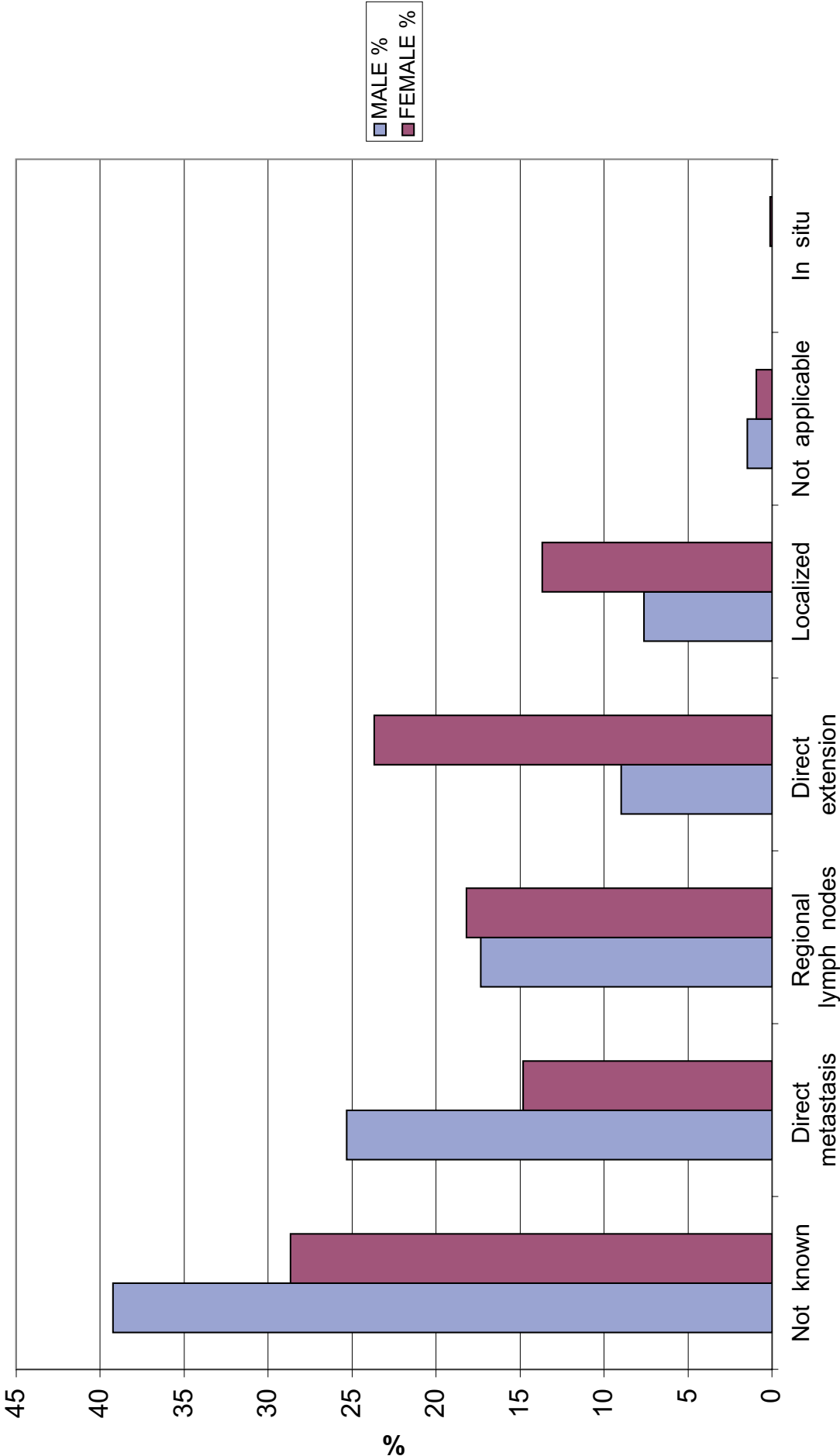
**FIGURE 1**  
Type of Diagnosis of Cancer Site of All Cancer



**TABLE 5**  
**The Type of Extension of Cancer of All Cancer**

Type of Extension	Male		Female		Total	
	n	%	n	%	n	%
Not record	0	0	0	0	0	0
In situ	0	0	2	0.1	2	0.1
Localized	78	7.6	259	13.6	337	11.5
Direct extension	91	8.9	450	23.7	541	18.5
Regional lymph nodes	179	17.4	345	18.2	524	17.9
Distant metastasis	260	25.3	281	14.8	541	18.5
Not applicable	15	1.5	17	0.9	32	1.1
Not known	404	39.3	545	28.7	949	32.4
<b>All Patients</b>	<b>1,027</b>	<b>100</b>	<b>1,899</b>	<b>100</b>	<b>2,926</b>	<b>100</b>

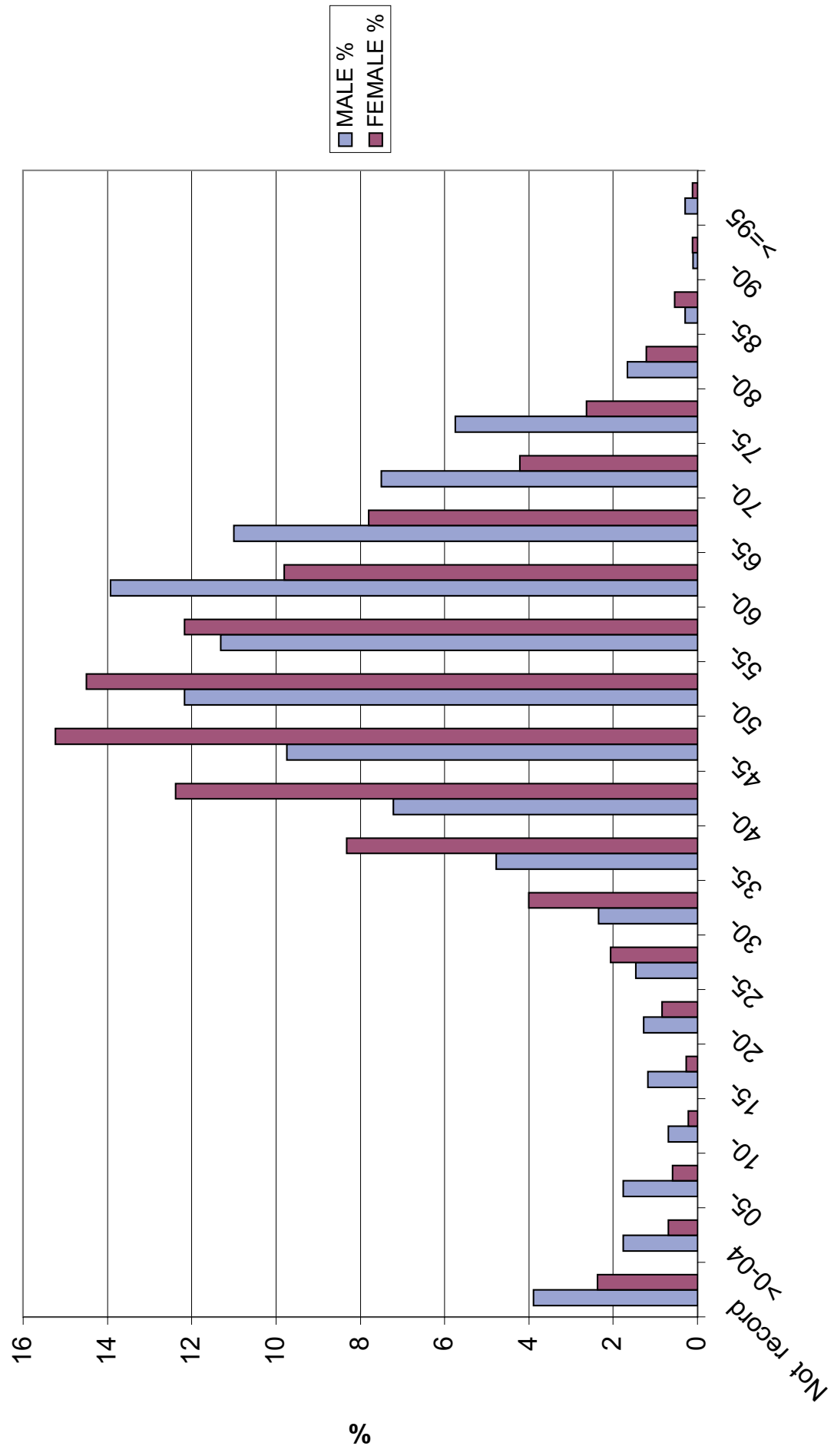
FIGURE 2  
Type of Extension of Cancer Site of All Cancer



**TABLE 6**  
**Number by Age - Group and Sex for All Cancer**

Age	Male		Female		Total	
	n	%	n	%	n	%
Not record	0	0	0	0	0	0
> 0-04	18	1.8	11	0.6	29	1
05-	18	1.8	11	0.6	29	1
10-	7	0.7	4	0.2	11	0.4
15-	12	1.2	5	0.3	17	0.6
20-	13	1.3	16	0.8	29	1
25-	15	1.5	39	2.1	54	1.9
30-	24	2.3	77	4.1	101	3.5
35-	50	4.9	159	8.4	209	7.1
40-	81	7.9	245	12.9	326	11.1
45-	104	10.1	295	15.5	399	13.6
50-	133	13	288	15.2	421	14.4
55-	117	11.4	237	12.5	354	12.1
60-	164	16	199	10.5	363	12.4
65-	114	11.1	149	7.9	263	9
70-	77	7.5	80	4.2	157	5.4
75-	59	5.7	49	2.6	108	3.7
80-	17	1.7	23	1.2	40	1.4
85-	3	0.3	10	0.5	13	0.4
90-	1	0.1	2	0.1	3	0.1
≥ 95	0	0	0	0	0	0
<b>All Patients</b>	<b>1,027</b>	<b>100</b>	<b>1,899</b>	<b>100</b>	<b>2,926</b>	<b>100</b>

**FIGURE 3**  
Number by Age - Group and Sex for All Cancer



**TABLE 7**  
**Method of Treatment in Cancer of All Cancer**

Method of Treatment	Male		Female		Total	
	n	%	n	%	n	%
Surgery only	179	17.4	549	28.9	728	24.9
Radiation therapy only	136	13.2	330	17.4	466	15.9
Chemotherapy only	170	16.6	235	12.4	405	13.8
Supportive only	197	19.2	183	9.6	380	13
Surgery + Radiation therapy	56	5.5	123	6.5	179	6.1
Surgery + Radiation therapy + Chemotherapy	19	1.9	48	2.5	67	2.3
Surgery + Radiation therapy + Chemotherapy + Hormone	0	0	1	0.1	1	0
Surgery + Chemotherapy	46	4.5	186	9.8	232	7.9
Surgery + Chemotherapy + Hormone	0	0	3	0.2	3	0.1
Surgery + Hormone	2	0.2	3	0.2	5	0.2
Surgery + Immunotherapy	0	0	1	0.1	1	0
Radiation therapy + Chem	55	5.4	59	3.1	114	3.9
Chemotherapy + Hormone	0	0	1	0.1	1	0
Other	27	2.6	25	1.3	52	1.8
Not Record	140	13.6	152	8	292	10
<b>All Patients</b>	<b>1,027</b>	<b>100</b>	<b>1,899</b>	<b>100</b>	<b>2,926</b>	<b>100</b>

**TABLE 8**  
**Number of Cases by Age - Group in Males**

Site	ICD 0	All Age	Age UNK.	<1	1-	5-	10-	15-	20-	25-	30-	35-	40-	45-	50-	55-	60-	65-	70-	75-	80-	85-	90-	95+
Lip	C00	1														1								
Tongue	C01-C02	43									1		5	4	5	9	9	5	1	4				
Mouth	C03-C06	14			1								1		1	2	1	1	5	1	1			
Salivary gland	C07-C08	3											1		1	1								
Oropharynx	C09-C10	18										1	2	3	2	3	3	3	1					
Nasopharynx	C11	50					1	1	1		4	6	12	11	7	4		1		2				
Hypopharynx	C12-C13	11											1	1	2	1		4	2					
Oral Cavity	C14	1															1							
Esophagus	C15	33										1	1	4	7	5	5	4	4	2				
Stomach	C16	25									1	3	2	4	5	2	4	1	1		1	1		
Small intestine	C17	3											1		1		1							
Colon	C18	66								3		4	6	7	12	9	9	9	4	1	2			
Rectum, Rectosigmoid and Anus	C19-C21	51							1		1	2	7	8	6	7	6	4	4	5				
Liver and Intrahepatic bile ducts	C22	168								1	6	11	14	20	30	19	33	14	11	9				
Gallbladder and other parts of biliary tract	C23-C24	4								1					1	1	1							
Pancreas	C25	6									1		1	1		1	1			1				
Nasal cavity	C30-C31	6			1				1	1				1		1			1					
Larynx	C32	16										1		1		2	2	3	2	4	1			
Trachea, Bronchus & Lung	C33-C34	215					1	1		1	6	8	20	23	25	48	37	19	19	5	2			
Thymus Mediastinum	C37-C38	0																						
Bone	C40-C41	4		1			1	1								1								
Haematopoetic and Reticuloendothelial	C42	16		2	9	2								1		2								
Skin	C44	27							1	1	1	1	3	1	1	4	6	1	4	2	1			
Peripheral nerve and Autonomic nervous	C47	6		4	1						1													
Retroperitonium and Peritonium	C48	2									1						1							
Conectine, Subcu. & Soft Tissues	C49	14		2			1				1	1	3	1	1		2		1		1			
Breast	C50	7											2		2	1	1				1			
Vulva, Vagina	C51-C52	0																						
Cervix	C53	0																						
Corpus uteri	C54	0																						
Uterus	C55	0																						
Ovary	C56	0																						
Other unspecified femal genital organs	C57	0																						
Placenta	C58	0																						
Penis	C60	10												2	1	1	3	1	1		1			
Prostate gland	C61	17														1	4	4	4	3	1			
Testis	C62	5					1	1	1			1					1							
Other unspecified male genital organs	C63	0																						
Kidney, Renal pelvis, Urinary organs	C64-C66,C68	8										1	1	4				1	1					
Bladder	C67	9												2	2				2	1	1		1	
Eye and adnexa	C69	4		4																				
Meninges	C70	0																						
Brain	C71	23		2	4		2	2	1		5		1				1	3	2					
Spinal cord andnerovous system	C72	0																						
Thyroid gland	C73	9					1	1	1		1				2	2					1			
Adrenal gland	C74	0																						
Other endocrine gland	C75	4				1			1	1										1				
Other and ill-defind site	C76	0																						
Lymphnodes	C77	55		1	3	2	3	1	3		4	3	5	2	11	2	3	10	1	1				
Unknown primary site	C80	73		1		2	1	1			1	3	4	5	9	11	18	8	6	3				
<b>All Site</b>		<b>1,027</b>		<b>0</b>	<b>18</b>	<b>18</b>	<b>7</b>	<b>12</b>	<b>13</b>	<b>15</b>	<b>24</b>	<b>49</b>	<b>74</b>	<b>100</b>	<b>124</b>	<b>117</b>	<b>143</b>	<b>113</b>	<b>77</b>	<b>59</b>	<b>17</b>	<b>3</b>	<b>1</b>	<b>43</b>

**TABLE 9**  
**Number of Cases by Age - Group in Females**

Site	ICD 0	All Age	Age UNK.	<1	1-	5-	10-	15-	20-	25-	30-	35-	40-	45-	50-	55-	60-	65-	70-	75-	80-	85-	90-	95+
Lip	C00	9															2	2	3	1		1		
Tongue	C01-C02	13										3	2	1		3	3		1					
Mouth	C03-C06	15												3		1	1	2	3	2	2	1		
Salivary gland	C07-C08	4							1				1		1					1				
Oropharynx	C09-C10	4									1			1			1		1					
Nasopharynx	C11	21						2		2		3	2		2	4	3	2		1				
Hypopharynx	C12-C13	1																1						
Oral Cavity	C14	0																						
Esophagus	C15	8												1	2	1	1	1	1		1			
Stomach	C16	28							1			3	1	7	2	3	4	1	3	2	1			
Small intestine	C17	0																						
Colon	C18	69							3	1	1	2	6	7	12	6	11	12	5	2	1			
Rectum, Rectosigmoid and Anus	C19-C21	46							1			2	1	3	6	5	10	9	3	5		1		
Liver and Intrahepatic bile ducts	C22	63							1		2	3	4	8	8	14	13	5	1	3	1			
Gallbladder and other parts of biliary tract	C23-c24	7										1		1		3		1					1	
Pancreas	C25	10												1	1		1	3	2	1	1			
Nasal cavity	C30-C31	3								1				1			1							
Larynx	C32	3											1		1	1								
Trachea, Bronchus & Lung	C33-C34	110									2	4	12	11	23	12	15	15	7	2	5	2		
Thymus Mediastinum	C37-C38	2											1	1										
Bone	C40-C41	6				1			1	2		1				1								
Haematopoetic and Reticuloendothelial	C42	8		1	4	1					1		1											
Skin	C44	30								1		3	3	3	1	2	5	3	3	4	2			
Peripheral nerve and Autonomic nervous	C47	6		3	2										1									
Retroperitonium and Peritonium	C48	2									2													
Conectine, Subcu. & Soft Tissues	C49	18								2	1	1	1	2	3	2	1	1	2		2			
Breast	C50	679							3	11	32	76	118	132	110	89	57	29	15	4	2	1		
Vulva, Vagina	C51-C52	9											1		3	2		2					1	
Cervix	C53	397								7	18	37	55	73	62	46	42	33	15	7	2			
Corpus uteri	C54	51										3	4	6	9	13	4	7	5					
Uterus	C55	0																						
Ovary	C56	95			1	1	2	3	2	4	7	16	17	15	12		6	6	1	2				
Other unspecified femal genital organs	C57	0																						
Placenta	C58	5								1	1		2	1										
Penis	C60	0																						
Prostate gland	C61	0																						
Testis	C62	0																						
Other unspecified male genital organs	C63	0																						
Kidney, Renal pelvis, Urinary organs	C64-C66,C68	6		1			1	1	1											2				
Bladder	C67	4										1		1	1				1					
Eye and adnexa	C69	3		3																				
Meninges	C70	1															1							
Brain	C71	11		2	2	1			1		1	1				1	2							
Spinal cord andnerovous system	C72	0																						
Thyroid gland	C73	30								4	2		4	4	4	4	2	3	2	1				
Adrenal gland	C74	0																						
Other endocrine gland	C75	0																						
Other and ill-defind site	C76	0																						
Lymphnodes	C77	51							2	2	4	5	4	2	11	4	3	4	4	2	2	2	2	
Unknown primary site	C80	72		1	2					2	4	4	4	8	10	8	10	7	2	7	1	2		
<b>All Site</b>		<b>1,898</b>		<b>0</b>	<b>13</b>	<b>11</b>	<b>4</b>	<b>5</b>	<b>16</b>	<b>39</b>	<b>76</b>	<b>158</b>	<b>235</b>	<b>289</b>	<b>275</b>	<b>231</b>	<b>186</b>	<b>148</b>	<b>80</b>	<b>50</b>	<b>23</b>	<b>10</b>	<b>2</b>	<b>47</b>

**TABLE 10**  
**Pathology According to Sites**

<b>Pathology and Sites</b>	<b>M</b>	<b>F</b>	<b>Total</b>
<b>C00 Malignant Neoplasm of Lip</b>	<b>1</b>	<b>9</b>	<b>10</b>
8051/3 Verrucous carcinoma	0	1	1
8070/3 Squamous cell carcinoma	0	8	8
8000/3 Neoplasm, malignant	1	0	1
<b>C01 - C02 Malignant Neoplasm of Tongue</b>	<b>43</b>	<b>13</b>	<b>56</b>
8010/3 Carcinoma	1	0	1
8020/3 Carcinoma, undifferentiate	1	0	1
8070/3 Squamous cell carcinoma	40	13	53
8140/3 Adenocarcinoma	1	0	1
<b>C03 - C06 Malignant Neoplasm of Gum, Floor of Mouth, Palate, and Other Unspecified Part of Mouth</b>	<b>14</b>	<b>15</b>	<b>29</b>
8070/3 Squamous cell carcinoma	13	14	27
8071/3 Squamous cell carcinoma keratinizing	0	1	1
8000/3 Neoplasm, malignant	1	0	1
<b>C07 - C08 Malignant Neoplasm Parotid and Other Major Salivary Gland</b>	<b>3</b>	<b>4</b>	<b>7</b>
8070/3 Squamous cell carcinoma	1	0	1
8140/3 Adenocarcinoma	1	0	1
8200/3 Adenoid cystic carcinoma	1	1	2
8430/3 Mucoepidermoid carcinoma	0	2	2
8940/3 Mixed tumour, malignant	0	1	1
<b>C09 Malignant Neoplasm of Tonsil</b>	<b>17</b>	<b>4</b>	<b>21</b>
8010/3 Carcinoma	1	0	1
8070/3 Squamous cell carcinoma	12	3	15
9590/3 Malignant lymphoma	0	1	1
9680/3 Malignant, large cell, diffuse	4	0	4
<b>C10 Malignant Neoplasm of Oropharynx</b>	<b>1</b>	<b>0</b>	<b>1</b>
8020/3 Carcinoma, undifferentiate	1	0	1
<b>C11 Malignant Neoplasm of Nasopharynx</b>	<b>50</b>	<b>21</b>	<b>71</b>
8010/3 Carcinoma	6	2	8
8020/3 Carcinoma, undifferentiate	18	8	26
8070/3 Squamous cell carcinoma	20	8	28
8072/3 Squamous cell carcinoma, large cell non keratinizing	0	1	1
9590/3 Malignant lymphoma	0	1	1
9680/3 Malignant, large cell, diffuse	0	1	1
8000/3 Neoplasm, malignant	2	0	2
<b>C12 Malignant Neoplasm of Pyriform Sinus</b>	<b>3</b>	<b>0</b>	<b>3</b>
8070/3 Squamous cell carcinoma	3	0	3

Pathology and Sites		M	F	Total
<b>C13</b>	<b>Malignant Neoplasm of Hypopharynx</b>	<b>8</b>	<b>1</b>	<b>9</b>
	8070/3 Squamous cell carcinoma	7	0	7
	8000/3 Neoplasm, malignant	1	1	2
<b>C14</b>	<b>Malignant Neoplasm of Other and Ill-defined Site in the Lip, Oral Cavity and Pharynx</b>	<b>1</b>	<b>0</b>	<b>1</b>
	8070/3 Squamous cell carcinoma	1	0	1
<b>C15</b>	<b>Malignant Neoplasm of Oesophagus</b>	<b>33</b>	<b>8</b>	<b>41</b>
	8070/3 Squamous cell carcinoma	31	7	38
	8140/3 Adenocarcinoma	1	1	2
	8000/3 Neoplasm, malignant	1	0	1
<b>C16</b>	<b>Malignant Neoplasm of Stomach</b>	<b>25</b>	<b>28</b>	<b>53</b>
	8010/3 Carcinoma	1	0	1
	8070/3 Squamous cell carcinoma	0	1	1
	8140/3 Adenocarcinoma	19	19	38
	8153/3 Gastrinoma, malignant	1	0	1
	8481/3 Mucin-producing adenocarcinoma	1	1	2
	8490/3 Signet ring cell carcinoma	0	3	3
	8890/3 Leiomyosarcoma	0	1	1
	9590/3 Malignant lymphoma	2	0	2
	9680/3 Malignant, large cell, diffuse	1	0	1
	8000/3 Neoplasm, malignant	0	3	3
<b>C17</b>	<b>Malignant Neoplasm of Small Intestine</b>	<b>3</b>	<b>0</b>	<b>3</b>
	8481/3 Mucin-producing adenocarcinoma	1	0	1
	8936/3 Gastrointestinal stromal squamous	1	0	1
	9670/3 Malignant lymphoma, small lymphocytic	1	0	1
<b>C18</b>	<b>Malignant Neoplasm of Colon</b>	<b>66</b>	<b>69</b>	<b>135</b>
	8140/3 Adenocarcinoma	56	56	112
	8480/3 Mucinous adenocarcinoma	1	1	2
	8481/3 Mucin-producing adenocarcinoma	1	0	1
	8490/3 Signet ring cell carcinoma	0	1	1
	9591/3 Malignant lymphoma, non-Hodgkin's	0	1	1
	9680/3 Malignant, large cell, diffuse	1	0	1
	8000/3 Neoplasm, malignant	7	10	17
<b>C19</b>	<b>Malignant Neoplasm of Rectosigmoid</b>	<b>5</b>	<b>4</b>	<b>9</b>
	8010/3 Cacinoma	0	1	1
	8140/3 Adenocarcinoma	5	3	8
<b>C20</b>	<b>Malignant Neoplasm of Rectum</b>	<b>43</b>	<b>40</b>	<b>83</b>
	8070/3 Squamous cell carcinoma	1	0	1
	8140/3 Adenocarcinoma	38	34	72
	8480/3 Mucinous adenocarcinoma	0	1	1
	8481/3 Mucin-producing adenocarcinoma	0	1	1

Pathology and Sites		M	F	Total
	8490/3 Signet ring cell carcinoma	1	1	2
	8560/3 Adenosquamous carcinoma	1	0	1
	8770/3 Mixed epitheloid and spindle melanoma	0	1	1
	8000/3 Neoplasm, malignant	2	2	4
<b>C21</b>	<b>Malignant Neoplasm of Anus and Anal Canal</b>	<b>3</b>	<b>2</b>	<b>5</b>
	8070/3 Squamous cell carcinoma	2	2	4
	8123/3 Basaloid carcinoma	1	0	1
<b>C22</b>	<b>Malignant Neoplasm of Liver and Intrahepatic Bile Ducts</b>	<b>168</b>	<b>63</b>	<b>231</b>
	8010/3 Carcinoma	2	0	2
	8020/3 Carcinoma, undifferentiate	0	2	2
	8140/3 Adenocarcinoma	7	4	11
	8160/3 Cholangiocarcinoma	44	24	68
	8170/3 Hepatocellular carcinoma	91	25	116
	8172/3 Hepatocellular carcinoma scirrhou	0	1	1
	8180/3 Combined hepato and cholangio	1	0	1
	8000/3 Neoplasm, malignant	23	7	30
<b>C23</b>	<b>Malignant Neoplasm of Gall Bladder</b>	<b>1</b>	<b>3</b>	<b>4</b>
	8140/3 Adenocarcinoma	0	2	2
	8260/3 Papillary adenocarcinoma	0	1	1
	8000/3 Neoplasm, malignant	1	0	1
<b>C24</b>	<b>Malignant Neoplasm of Other and Unspecified Parts of Biliary Tract</b>	<b>3</b>	<b>4</b>	<b>7</b>
	8140/3 Adenocarcinoma	3	1	4
	8000/3 Neoplasm, malignant	0	3	3
<b>C25</b>	<b>Malignant Neoplasm of Pancreas</b>	<b>6</b>	<b>10</b>	<b>16</b>
	8010/3 Carcinoma	0	1	1
	8140/3 Adenocarcinoma	2	2	4
	8470/3 Mucinous cystadendcarcinoma	0	1	1
	8000/3 Neoplasm, malignant	4	6	10
<b>C30</b>	<b>Malignant Neoplasm of Nasal Cavity and Middle Ear</b>	<b>4</b>	<b>2</b>	<b>6</b>
	8043/3 Small cell ca fusiform cell	1	0	1
	8070/3 Squamous cell carcinoma	1	0	1
	8200/3 Adenoid cystic carcinoma	1	0	1
	9590/3 Malignant lymphoma	1	0	1
	9591/3 Malignant lymphoma, non-Hodgkin's	0	1	1
	9731/3 Plasmacytoma	0	1	1
<b>C31</b>	<b>Malignant Neoplasm of Accessory Sinuses</b>	<b>2</b>	<b>1</b>	<b>3</b>
	9180/3 Osteosarcoma	0	1	1
	8000/3 Neoplasm, malignant	2	0	2

Pathology and Sites		M	F	Total
<b>C32</b>	<b>Malignant Neoplasm of Larynx</b>	<b>16</b>	<b>3</b>	<b>19</b>
	8020/3 Carcinoma, undifferentiate	1	0	1
	8070/3 Squamous cell carcinoma	15	3	18
<b>C33 - C34</b>	<b>Malignant Neoplasm of Tracher Bronchus and Lung</b>	<b>215</b>	<b>110</b>	<b>325</b>
	8001/3 Tumor cell, malignant	0	1	1
	8010/3 Carcinoma	2	2	4
	8012/3 Large cell carcinoma	2	0	2
	8020/3 Carcinoma, undifferentiate	4	3	7
	8041/3 Small cell carcinoma	18	0	18
	8043/3 Small cell carcinoma fusiform cell	1	0	1
	8046/3 Non-small cell carcinoma	31	9	40
	8070/3 Squamous cell carcinoma	33	5	38
	8072/3 Squamous cell carcinoma, large cell non keratinizing	0	1	1
	8140/3 Adenocarcinoma	64	51	115
	8200/3 Adenoid cystic carcinoma	1	0	1
	8250/3 Bronchio-alveolar adenocarcinoma	12	8	20
	8260/3 Papillary adenocarcinoma	2	2	4
	8310/3 Clear cell adenocarcinoma	1	0	1
	8481/3 Mucin-producing adenocarcinoma	0	1	1
	9591/3 Malignant lymphoma, non-Hodgkin's	1	0	1
	8000/3 Neoplasm, malignant	43	26	69
<b>C37</b>	<b>Malignant Neoplasm of Thymus</b>	<b>0</b>	<b>2</b>	<b>2</b>
	8580/3 Thymoma, malignant	0	2	2
<b>C40 - C41</b>	<b>Malignant Neoplasm of Bone and Cartilage</b>	<b>4</b>	<b>6</b>	<b>10</b>
	9180/3 Osteosarcoma	3	3	6
	9220/3 Chondrosarcoma	0	1	1
	9250/3 Giant cell tumour of bone, malignant	0	1	1
	9260/3 Ewing's sarcoma	1	0	1
	8000/3 Neoplasm, malignant	0	1	1
<b>C42</b>	<b>Haematopoetic System</b>	<b>16</b>	<b>8</b>	<b>24</b>
	9732/3 Multiple myeloma	1	0	1
	9800/3 Leukaemia	1	0	1
	9820/3 Lymphoid leukaemia	0	2	2
	9823/3 Chronic lymphocytic leukaemia	2	0	2
	9835/3 Precursor cell lymphoblastic leukaemia	12	4	16
	9863/3 Chronic myeloid leukaemia	0	2	2
<b>C44</b>	<b>Other Malignant Neoplasm of Skin</b>	<b>27</b>	<b>30</b>	<b>57</b>
	8032/3 Spindle cell carcinoma	0	1	1
	8051/3 verrucous carcinoma	0	1	1
	8070/3 Squamous cell carcinoma	12	8	20
	8090/3 Basal cell carcinoma	3	7	10
	8400/3 Sweat gland adenocarcinoma	0	1	1
	8401/3 Apocrine adenocarcinoma	1	0	1

Pathology and Sites		M	F	Total
	8408/3 Eccrine papillary adenocarcinoma	1	0	1
	8720/3 Malignant melanoma	7	10	17
	8832/3 Dermatofibrosarcoma	2	1	3
<b>C47</b>	<b>Malignant Neoplasm of Peripheral Nerve and Autonomic Nervous System</b>	<b>6</b>	<b>6</b>	<b>12</b>
	8680/3 Paraganglioma malignant	1	0	1
	9490/3 Ganglioneuroblastoma	1	1	2
	9500/3 Neuroblastoma	3	5	8
	9505/3 Ganglioma, anaplastic	1	0	1
<b>C48</b>	<b>Malignant Neoplasm of Retroperitonium and Peritonium</b>	<b>2</b>	<b>2</b>	<b>4</b>
	8001/3 Tumor cell, malignant	0	1	1
	8890/3 Leiomyosarcoma	1	1	2
	8900/3 Rhabdomyosarcoma	1	0	1
<b>C49</b>	<b>Malignant Neoplasm of Other Connective Tissue and Soft Tissue</b>	<b>14</b>	<b>18</b>	<b>32</b>
	8800/3 Sarcoma	1	4	5
	8810/3 Fibrosarcoma	0	2	2
	8830/3 Fibrous histiocytoma, malignant	4	3	7
	8852/3 Myxoid liposarcoma	2	0	2
	8854/3 Pleomorphic liposarcoma	1	0	1
	8890/3 Leiomyosarcoma	1	6	7
	8895/3 Myosarcoma	1	0	1
	8900/3 Rhabdomyosarcoma	1	0	1
	8910/3 Embryonal rhabdomyosarcoma	1	0	1
	9040/3 Synovial sarcoma	1	1	2
	9120/3 Haemangiosarcoma	1	1	2
	9370/3 Chordoma	0	1	1
<b>C50</b>	<b>Malignant Neoplasm of Breast</b>	<b>7</b>	<b>679</b>	<b>686</b>
	8001/3 Tumor cell, malignant	0	1	1
	8010/3 Carcinoma	0	11	11
	8050/3 Papillary carcinoma	0	1	1
	8140/3 Adenocarcinoma	0	19	19
	8211/3 Tubular adenocarcinoma	0	1	1
	8480/3 Mucinous adenocarcinoma	0	3	3
	8500/3 Infiltrating duct carcinoma	7	566	573
	8501/3 Comedocarcinoma	0	2	2
	8503/3 Intraduct papillary adenocarcinoma	0	4	4
	8510/3 Medullary carcinoma	0	14	14
	8520/3 lobular carcinoma	0	3	3
	8522/3 Infiltrating duct and lobular carcinoma	0	3	3
	8980/3 Carcinosarcoma	0	1	1
	9020/3 Phyllodes tumour, malignant	0	1	1
	8000/3 Neoplasm, malignant	0	49	49

Pathology and Sites		M	F	Total
<b>C51</b>	<b>Malignant Neoplasm of Valva</b>	<b>0</b>	<b>3</b>	<b>3</b>
	8051/3 Verrucous carcinoma	0	1	1
	8070/3 Squamous cell carcinoma	0	2	2
<b>C52</b>	<b>Malignant Neoplasm of Vagina</b>	<b>0</b>	<b>6</b>	<b>6</b>
	8070/3 Squamous cell carcinoma	0	4	4
	8140/3 Adenocarcinoma	0	1	1
	8560/3 Adenosquamous carcinoma	0	1	1
<b>C53</b>	<b>Malignant Neoplasm of Cervix</b>	<b>0</b>	<b>397</b>	<b>397</b>
	8010/3 Carcinoma	0	1	1
	8041/3 Small cell carcinoma	0	1	1
	8052/3 Papillary squamous cell carcinoma	0	11	11
	8070/3 Squamous cell carcinoma	0	64	64
	8071/3 Squamous cell carcinoma keratinizing	0	14	14
	8072/3 Squamous cell carcinoma, large cell non keratinizing	0	202	202
	8073/3 Squamous cell carcinoma, small cell non keratinizing	0	1	1
	8074/3 Squamous cell carcinoma, spindle cell	0	1	1
	8076/3 Squamous cell carcinoma microinvasive	0	10	10
	8140/3 Adenocarcinoma	0	70	70
	8246/3 Neuroendocrine carcinoma	0	1	1
	8260/3 Papillary adenocarcinoma	0	2	2
	8310/3 Clear cell adenocarcinoma	0	1	1
	8560/3 Adenosquamous carcinoma	0	6	6
	8000/3 Neoplasm, malignant	0	12	12
<b>C54 - C55</b>	<b>Malignant Neoplasm of Corpus Uteri and Uterus Part Unspecified</b>	<b>0</b>	<b>51</b>	<b>51</b>
	8140/3 Adenocarcinoma	0	19	19
	8260/3 Papillary adenocarcinoma	0	1	1
	8380/3 Endometrioid carcinoma	0	28	28
	8460/3 Papillary serous cystadenoca	0	1	1
	8481/3 Mucin-producing adenocarcinoma	0	1	1
	8980/3 Carcinosarcoma	0	1	1
<b>C56</b>	<b>Malignant Neoplasm of Ovary</b>	<b>0</b>	<b>95</b>	<b>95</b>
	8010/3 Carcinoma	0	1	1
	8050/3 Papillary carcinoma	0	1	1
	8070/3 Squamous cell carcinoma	0	1	1
	8140/3 Adenocarcinoma	0	16	16
	8260/3 Papillary adenocarcinoma	0	2	2
	8310/3 Clear cell adenocarcinoma	0	13	13
	8380/3 Endometrioid carcinoma	0	16	16
	8441/3 Serous cystadenocarcinoma	0	5	5
	8460/3 Papillary serous cystadenoca	0	3	3
	8470/3 Mucinous cystadenocarcinoma	0	9	9
	8471/3 Papillary mucinous cystadenoca	0	1	1
	8480/3 Mucinous adenocarcinoma	0	4	4

Pathology and Sites	M	F	Total
8481/3 Mucinous-producing adenocarcinoma	0	1	1
8600/3 Thecoma, malignant	0	1	1
8620/3 Granulosar cell tumor, malignant	0	2	2
8980/3 Carcinosarcoma	0	3	3
9060/3 Dtsgerminoma	0	2	2
9064/3 Germinoma	0	1	1
9080/3 Teratoma, malignant	0	4	4
8000/3 Neoplasm, malignant	0	9	9
<b>C58 Malignant Neoplasm of Placenta</b>	<b>0</b>	<b>5</b>	<b>5</b>
9100/3 Choriocarcinoma	0	5	5
<b>C60 Malignant Neoplasm of Penis</b>	<b>10</b>	<b>0</b>	<b>10</b>
8070/3 Squamous cell carcinoma	9	0	9
8000/3 Neoplasm, malignant	1	0	1
<b>C61 Malignant Neoplasm of Prostate</b>	<b>17</b>	<b>0</b>	<b>17</b>
8020/3 Carcinoma, undifferentiate	1	0	1
8140/3 Adenocarcinoma	10	0	10
8000/3 Neoplasm, malignant	6	0	6
<b>C62 Malignant Neoplasm of Testis</b>	<b>5</b>	<b>0</b>	<b>5</b>
8910/3 Embryonal rhabdomyosarcoma	1	0	1
9061/3 Seminoma	4	0	4
<b>C64 Malignant Neoplasm of Kidney</b>	<b>7</b>	<b>5</b>	<b>12</b>
8010/3 Carcinoma	1	1	2
8310/3 Clear cell adenocarcinoma	0	1	1
8312/3 Renal cell carcinoma	6	2	8
8960/3 Nephroblastoma (wilms' tumor)	0	1	1
<b>C65 Malignant Neoplasm of Renal Pelvis</b>	<b>1</b>	<b>1</b>	<b>2</b>
8120/3 Transitional cell carcinoma	1	1	2
<b>C67 - C68 Malignant Neoplasm of Bladder and of Other and Unspecified Part of Urinary Organs</b>	<b>9</b>	<b>4</b>	<b>13</b>
8010/3 Carcinoma	1	0	1
8070/3 Squamous cell carcinoma	1	0	1
8120/3 Transitional cell carcinoma	3	4	7
8130/3 Papillary transitional cell carcinoma	1	0	1
8000/3 Neoplasm, malignant	3	0	3
<b>C69 Malignant Neoplasm of Eye and Adnexa</b>	<b>4</b>	<b>3</b>	<b>7</b>
9510/3 Retinoblastoma	4	3	7
<b>C70 Malignant Neoplasm of Meninges</b>	<b>0</b>	<b>1</b>	<b>1</b>
9530/3 Meningioma, malignant	0	1	1

Pathology and Sites		M	F	Total
<b>C71</b>	<b>Malignant Neoplasm of Brain</b>	<b>23</b>	<b>11</b>	<b>34</b>
	9064/3 Germinoma	1	0	1
	9085/3 Mixed germ cell tumor	1	0	1
	9382/3 Mixed glioma	1	1	2
	9391/3 Ependymoma	1	0	1
	9400/3 Astrocytoma	7	1	8
	9401/3 Astrocytoma, anaplastic	1	1	2
	9411/3 Gemistocytic astrocytoma	1	0	1
	9440/3 Glioblastoma	4	4	8
	9451/3 Oligodendroglioma, anaplastic	2	0	2
	9470/3 Medulloblastoma	3	3	6
	8000/3 Neoplasm, malignant	1	1	2
<b>C73</b>	<b>Malignant Neoplasm of Thyroid</b>	<b>9</b>	<b>30</b>	<b>39</b>
	8010/3 Carcinoma	0	1	1
	8050/3 Papillary carcinoma	7	9	16
	8070/3 Squamous cell carcinoma	0	1	1
	8140/3 Adenocarcinoma	0	1	1
	8260/3 Papillary adenocarcinoma	1	9	10
	8330/3 Follicular adenocarcinoma	1	2	3
	8332/3 Follicular adenocarcinoma, trabicular	0	1	1
	8340/3 Papillary carcinoma follicula variant	0	2	2
	8000/3 Neoplasm, malignant	0	4	4
<b>C75</b>	<b>Malignant Neoplasm of Other Endocrine Grand and Relate Structures</b>	<b>4</b>	<b>0</b>	<b>4</b>
	8272/3 Pituitary carcinoma	1	0	1
	9064/3 Germinoma	1	0	1
	9080/3 Tertoma, malignant	1	0	1
	8000/3 Neoplasm, malignant	1	0	1
<b>C77</b>	<b>Lymph Nodes</b>	<b>55</b>	<b>51</b>	<b>106</b>
	8010/3 Carcinoma	1	0	1
	8020/3 Carcinoma, undifferentiate	1	1	2
	8046/3 Non-small cell carcinoma	1	0	1
	8070/3 Squamous cell carcinoma	2	0	2
	8140/3 Adenocarcinoma	3	4	7
	8330/3 Follicular adenocarcinoma	0	1	1
	9590/3 Malignant lymphoma	8	13	21
	9591/3 Malignant lymphoma, non-Hodgkin's	13	12	25
	9596/3 Composit hodgkin's and non-Hodgkin's	0	1	1
	9650/3 Hodgkin's disease	6	2	8
	9652/3 Hodgkin's disease, mixed cellularity	0	1	1
	9670/3 Malignant lymphoma, small lymphocytic	1	2	3
	9675/3 Malignant, mixed small and large cell	2	1	3
	9680/3 Malignant, large cell, diffuse	10	11	21
	9684/3 Malignant, immunoblastic	1	0	1
	9690/3 Malignant lymphoma, follicular	2	1	3

Pathology and Sites		M	F	Total
	9695/3 Malignant, small cleave cell, nodular	0	1	1
	9700/3 Mycosis fungoides	1	0	1
	9714/3 Large cell (Ki-1+)lymphoma	1	0	1
	8000/3 Neoplasm, malignant	2	0	2
<b>C80</b>	<b>Unknown Primary Site</b>	<b>73</b>	<b>72</b>	<b>145</b>
	8010/3 Carcinoma	13	4	17
	8020/3 Carcinoma, undifferentiate	2	0	2
	8021/3 Carcinoma, anaplastic	1	0	1
	8032/3 Spindle cell carcinoma	0	2	2
	8041/3 Small cell carcinoma	0	2	2
	8046/3 Non-small cell carcinoma	3	2	5
	8050/3 Papillary carcinoma	1	1	2
	8070/3 Squamous cell carcinoma	6	5	11
	8071/3 Squamous cell carcinoma keratinizing	0	1	1
	8072/3 Squamous cell carcinoma, large cell nonkeratinizing	0	1	1
	8140/3 Adenocarcinoma	24	21	45
	8246/3 Neuroendocrine carcinoma	1	0	1
	8260/3 Papillary adenocarcinoma	0	2	2
	8330/3 Follicular adenocarcinoma	0	1	1
	8470/3 Mucinous cystadenocarcinoma	0	1	1
	8481/3 Mucinous-producing adenocarcinoma	0	1	1
	8490/3 Signet ring cell carcinoma	0	1	1
	8560/3 Adenosquamous carcinoma	1	0	1
	8720/3 Malignant melanoma	0	3	3
	8772/3 Spindle cell melanoma	0	1	1
	8800/3 Sarcoma	1	0	1
	8806/3 Desmoplastic small round cell	2	1	3
	8951/3 Mesodermal mixed tumour	0	1	1
	9064/3 Germinoma	1	0	1
	9364/3 Peripheral neuroectodermal tumour	1	0	1
	8000/3 Neoplasm, malignant	16	20	36

**TABLE 11**  
**Number by Age - Group and Sex for Colon and Rectum**

Age	Male		Female		Total	
	n	%	n	%	n	%
Not record	0	0	0	0	0	0
> 0-04	0	0	0	0	0	0
05-09	0	0	0	0	0	0
10-14	0	0	0	0	0	0
15-19	0	0	0	0	0	0
20-24	1	0.9	4	3.5	5	2.2
25-29	3	2.6	1	0.9	4	1.7
30-34	1	0.9	1	0.9	2	0.9
35-39	6	5.1	4	3.5	10	4.3
40-44	13	11.1	7	6.1	20	8.6
45-49	15	12.8	10	8.5	25	10.8
50-54	18	15.4	18	15.7	36	15.5
55-59	16	13.7	11	9.6	27	11.6
60-64	15	12.8	21	18.3	36	15.5
65-69	13	11.1	21	18.3	34	14.7
70-74	8	6.8	8	7	16	6.9
75-79	6	5.1	7	6.1	13	5.6
80-84	2	1.7	1	0.9	3	1.3
85-89	0	0	1	0.9	1	0.4
90-94	0	0	0	0	0	0
≥ 95	0	0	0	0	0	0
<b>All Patients</b>	<b>117</b>	<b>100</b>	<b>115</b>	<b>100</b>	<b>232</b>	<b>100</b>

**TABLE 12**  
**Basis of Diagnosis of Colon and Rectum**

Type of Diagnosis	Male		Female		Total	
	n	%	n	%	n	%
Not record	0	0	0	0	0	0
History & Physical examination	4	3.4	6	5.2	11	4.7
Endoscopy & Padiology	4	3.4	0	0	4	1.7
Surgery & Autopsy (no histol)	0	0	0	0	0	0
Specific biochem / Immuno tests	0	0	0	0	0	0
Cytology or Hematology	0	0	0	0	0	0
Histology of metastatic	7	6	4	3.5	11	4.7
Histology of primary	99	84.6	102	88.7	201	86.6
Autopsy with histology	0	0	0	0	0	0
Unknown	3	2.6	3	2.6	6	2.6
<b>All Patients</b>	<b>117</b>	<b>100</b>	<b>115</b>	<b>100</b>	<b>232</b>	<b>100</b>

**TABLE 13**  
**The Type of Extension in Colon and Rectum**

Type of Extension	Male		Female		Total	
	n	%	n	%	n	%
Not record	0	0	0	0	0	0
In situ	0	0	0	0	0	0
Localized	6	5.1	3	2.6	9	3.9
Direct extension	22	18.8	16	13.9	38	16.4
Regional lymph nodes	25	21.3	28	24.4	53	22.8
Distant metastasis	38	32.5	28	24.4	66	28.5
Not applicable	0	0	0	0	0	0
Unknown	26	22.2	40	34.8	66	28.5
<b>All Patients</b>	<b>117</b>	<b>100</b>	<b>115</b>	<b>100</b>	<b>232</b>	<b>100</b>

**TABLE 14**  
**Stage of Colon and Rectum**

Stage	Male		Female		Total	
	n	%	n	%	n	%
Not record	0	0	0	0	0	0
Stage I, A	4	3.4	1	0.9	5	2.2
Stage II, B	11	9.4	14	12.2	25	10.8
Stage III, C	26	22.2	22	19.1	48	20.7
Stage IV, D	44	37.6	40	34.8	84	36.2
Stage II a, B1	0	0	0	0	0	0
Stage II b, B2	0	0	0	0	0	0
Stage III a, C1	0	0	0	0	0	0
Stage III b, C2	0	0	0	0	0	0
Unknown	32	27.4	38	33	70	30.2
<b>All Patients</b>	<b>117</b>	<b>100</b>	<b>115</b>	<b>100</b>	<b>232</b>	<b>100</b>

**TABLE 15**  
**Method of Treatment of All Patients Colon and Rectum**

Method of Treatment	Male		Female		Total	
	n	%	n	%	n	%
Surgery only	35	29.9	37	32.2	75	32.3
Radiotherapy only	6	5.1	7	6.1	13	5.6
Chemotherapy only	23	19.7	18	15.7	41	17.7
Supportive only	5	4.3	9	7.8	14	6
Surgery + Radiotherapy	4	3.4	4	3.5	9	3.9
Surgery + Radiotherapy + Chemotherapy	4	3.4	7	6.1	11	4.7
Surgery + Chemotherapy	19	16.2	20	17.4	39	16.8
Radiotherapy + Chemotherapy	2	1.7	2	1.7	4	1.7
Other	1	0.9	1	0.9	2	0.9
Not record	18	15.3	10	8.7	24	10.3
<b>All Patients</b>	<b>117</b>	<b>100</b>	<b>115</b>	<b>100</b>	<b>232</b>	<b>100</b>

**TABLE 16**  
**Number by Age - Group and Sex for Liver**

Age	Male		Female		Total	
	n	%	n	%	n	%
Not record	0	0	0	0	0	0
> 0-04	0	0	0	0	0	0
05-09	0	0	0	0	0	0
10-14	0	0	0	0	0	0
15-19	0	0	0	0	0	0
20-24	0	0	1	1.6	1	0.4
25-29	1	0.6	0	0	1	0.4
30-34	6	3.6	2	3.2	8	3.5
35-39	11	6.6	3	4.8	14	6.1
40-44	14	8.3	4	6.4	18	7.8
45-49	20	11.9	8	12.7	28	12.1
50-54	30	17.7	8	12.7	38	16.5
55-59	19	11.3	14	22.2	33	14.3
60-64	33	19.6	13	20.6	46	19.9
65-69	14	8.3	5	7.9	19	8.2
70-74	11	6.6	1	1.6	12	5.2
75-79	9	5.4	3	4.8	12	5.2
80-84	0	0	1	1.6	1	0.4
85-89	0	0	0	0	0	0
90-94	0	0	0	0	0	0
≥ 95	0	0	0	0	0	0
<b>All patients</b>	<b>168</b>	<b>100</b>	<b>63</b>	<b>100</b>	<b>231</b>	<b>100</b>

**TABLE 17**  
**Basis of Diagnosis of Liver Cancer**

Type of Diagnosis	Male		Female		Total	
	n	%	n	%	n	%
Not record	0	0	0	0	0	0
History & Physical exam	9	5.4	3	4.8	12	5.2
Endoscopy & Padiology	93	55.4	25	39.7	118	51.1
Surgery & Autopsy (no histol)	0	0	0	0	0	0
Specific biochem / Immuno tests	15	8.9	1	1.6	16	6.9
Cytology or Hematology	9	5.4	3	4.8	12	5.2
Histology of metastatic	2	1.2	0	0	2	0.9
Histology of primary	39	23.2	30	47.6	69	29.9
Autopsy with histology	0	0	0	0	0	0
Unknown	1	0.6	0	0	1	0.4
<b>All Patients</b>	<b>168</b>	<b>100</b>	<b>63</b>	<b>100</b>	<b>231</b>	<b>100</b>

**TABLE 18**  
**The Type of Extension in Liver Cancer**

Type of Extension	Male		Female		Total	
	n	%	n	%	n	%
Not record	0	0	0	0	0	0
In situ	0	0	0	0	0	0
Localized	2	1.2	1	1.6	3	1.3
Direct extension	16	9.5	4	6.4	20	8.7
Regional lymph nodes	5	3	0	0	5	2.2
Distant metastasis	24	14.3	11	17.5	35	15.1
Not applicable	0	0	0	0	0	0
Unknown	121	72	47	74.6	168	72.7
<b>All Patients</b>	<b>168</b>	<b>100</b>	<b>63</b>	<b>100</b>	<b>231</b>	<b>100</b>

**TABLE 19**  
**Stage of Liver Cancer**

Stage	Male		Female		Total	
	n	%	n	%	n	%
Not record	0	0	0	0	0	0
Stage I, A	5	3	4	6.4	9	3.9
Stage II, B	10	6	6	9.5	16	6.9
Stage III, C	12	7.1	11	17.5	23	10
Stage IV, D	56	33.3	23	36.5	79	34.2
Stage II a, B1	0	0	0	0	0	0
Stage II b, B2	0	0	0	0	0	0
Stage III a, C1	0	0	0	0	0	0
Stage III b, C2	0	0	0	0	0	0
Unknown	85	50.6	19	30.2	104	45
<b>All Patients</b>	<b>168</b>	<b>100</b>	<b>63</b>	<b>100</b>	<b>231</b>	<b>100</b>

**TABLE 20**  
**Method of Treatment of All Patients Liver**

Method of Treatment	Male		Female		Total	
	n	%	n	%	n	%
Surgery only	15	8.9	10	15.9	25	10.8
Radiotherapy only	3	1.8	3	4.8	6	2.6
Chemotherapy only	59	35.1	19	30.2	78	33.8
Supportive only	65	38.7	24	38.1	89	38.5
Surgery + Chemotherapy	2	1.2	0	0	2	0.9
Radiotherapy + Chemotherapy	1	0.6	0	0	1	0.4
Other	7	4.2	3	4.8	10	4.3
Not record	16	9.5	4	6.4	20	8.7
<b>All Patients</b>	<b>168</b>	<b>100</b>	<b>63</b>	<b>100</b>	<b>231</b>	<b>100</b>

**TABLE 21**  
**Number by Age - Group and Sex for Lung**

Age	Male		Female		Total	
	n	%	n	%	n	%
Not record	0	0	0	0	0	0
> 0-04	0	0	0	0	0	0
05-09	0	0	0	0	0	0
10-14	0	0	0	0	0	0
15-19	1	0.5	0	0	1	0.3
20-24	1	0.5	0	0	1	0.3
25-29	0	0	0	0	0	0
30-34	1	0.5	2	1.8	3	0.9
35-39	6	2.8	4	3.6	10	3.1
40-44	8	3.7	12	10.9	20	6.2
45-49	20	9.3	11	10	31	9.5
50-54	23	10.7	23	20.9	46	14.2
55-59	25	11.6	12	10.9	37	11.4
60-64	48	22.3	15	13.6	63	19.4
65-69	37	17.2	15	13.6	52	16
70-74	19	8.8	7	6.4	26	8
75-79	19	8.8	2	1.8	21	6.5
80-84	5	2.3	5	4.6	10	3.1
85-89	2	0.9	2	1.8	4	1.2
90-94	0	0	0	0	0	0
≥ 95	0	0	0	0	0	0
<b>All patients</b>	<b>215</b>	<b>100</b>	<b>110</b>	<b>100</b>	<b>325</b>	<b>100</b>

**TABLE 22**  
**Basis of Diagnosis of Lung Cancer**

Type of Diagnosis	Male		Female		Total	
	n	%	n	%	n	%
Not record	0	0	0	0	0	0
History & Physical exam	13	6.1	4	3.6	17	5.2
Endoscopy & Padiology	22	10.2	14	12.7	36	11.1
Surgery & Autopsy (no histol)	0	0	1	0.9	1	0.3
Specific biochem / Immuno tests	0	0	0	0	0	0
Cytology or Hematology	38	17.7	12	10.9	50	15.4
Histology of metastatic	20	9.3	19	17.3	39	12
Histology of primary	121	56.3	60	54.6	181	55.7
Autopsy with histology	0	0	0	0	0	0
Unknown	0	0	0	0	0	0
<b>All Patients</b>	<b>215</b>	<b>100</b>	<b>110</b>	<b>1000</b>	<b>325</b>	<b>100</b>

**TABLE 23**  
**The Type of Extension in Lung Cancer**

Type of Extension	Male		Female		Total	
	n	%	n	%	n	%
Not record	0	0	0	0	0	0
In situ	0	0	0	0	0	0
Localized	6	2.8	6	5.5	12	3.7
Direct extension	11	5.1	11	10	22	6.8
Regional lymph nodes	44	20.5	17	15.5	61	18.8
Distant metastasis	74	34.4	45	40.9	119	36.6
Not applicable	0	0	0	0	0	0
Unknown	80	37.2	30	27.3	110	33.9
<b>All Patients</b>	<b>215</b>	<b>100</b>	<b>110</b>	<b>100</b>	<b>325</b>	<b>100</b>

**TABLE 24**  
**Stage of Lung Cancer**

Stage	Male		Female		Total	
	n	%	n	%	n	%
Not record	0	0	0	0	0	0
Stage I, A	0	0	2	1.8	2	0.6
Stage II, B	6	2.8	4	3.6	10	3.1
Stage III, C	48	22.3	20	18.2	68	20.9
Stage IV, D	92	42.8	51	46.4	143	44
Stage II a, B1	0	0	2	1.8	2	0.6
Stage II b, B2	1	0.5	0	0	1	0.3
Stage III a, C1	0	0	0	0	0	0
Stage III b, C2	2	0.9	0	0	2	0.6
Unknown	66	30.7	31	28.2	97	29.8
<b>All Patients</b>	<b>215</b>	<b>100</b>	<b>110</b>	<b>100</b>	<b>327</b>	<b>100</b>

**TABLE 25**  
**Method of Treatment of All Patients Lung**

Method of Treatment	Male		Female		Total	
	n	%	n	%	n	%
Surgery only	18	8.4	11	10	29	8.9
Radiation therapy only	19	8.8	8	7.3	27	8.3
Chemotherapy only	42	19.5	25	22.7	67	20.6
Supportive only	55	25.6	32	29.1	87	26.8
Surgery + Radiation therapy	5	2.3	2	1.8	7	2.2
Surgery + Radiation therapy + Chemotherapy	4	1.9	2	1.8	6	1.8
Surgery + Chemotherapy	7	3.3	3	2.7	10	3.1
Radiation therapy + Chemotherapy	8	3.7	5	4.5	13	4
Other	8	3.7	5	4.5	13	4
Not record	49	22.8	17	14.5	66	20.3
<b>All Patients</b>	<b>215</b>	<b>100</b>	<b>110</b>	<b>100</b>	<b>325</b>	<b>100</b>

**TABLE 26**  
**Number by Age - Group and Sex for Breast**

Age	Male		Female		Total	
	n	%	n	%	n	%
Not record	0	0	0	0	0	0
> 0-04	0	0	0	0	0	0
05-09	0	0	0	0	0	0
10-14	0	0	0	0	0	0
15-19	0	0	0	0	0	0
20-24	0	0	3	0.4	3	0.4
25-29	0	0	11	1.6	11	1.6
30-34	0	0	32	4.7	32	4.7
35-39	0	0	76	11.2	76	11.1
40-44	2	28.6	118	17.4	120	17.5
45-49	0	0	132	19.4	132	19.2
50-54	2	28.6	110	16.2	112	16.3
55-59	1	14.3	89	13.1	90	13.1
60-64	1	14.3	57	8.4	58	8.5
65-69	0	0	29	4.3	29	4.2
70-74	0	0	15	2.2	15	2.2
75-79	0	0	4	0.6	4	0.6
80-84	1	14.3	2	0.3	3	0.4
85-89	0	0	1	0.2	1	0.2
90-94	0	0	0	0	0	0
≥ 95	0	0	0	0	0	0
<b>All patients</b>	<b>7</b>	<b>100</b>	<b>679</b>	<b>100</b>	<b>686</b>	<b>100</b>

**TABLE 27**  
**Basis of Diagnosis of Breast Cancer**

Type of Diagnosis	Male		Female		Total	
	n	%	n	%	n	%
Not record	0	0	0	0	0	0
History & Physical exam	0	0	26	3.8	26	3.8
Endoscopy & Padiology	0	0	2	0.3	2	0.3
Surgery & Autopsy (no histol)	0	0	0	0	0	0
Specific biochem / Immuno tests	0	0	0	0	0	0
Cytology or Hematology	1	14.3	16	2.4	17	2.5
Histology of metastatic	0	0	16	2.4	16	2.3
Histology of primary	6	85.7	613	90.3	619	90.2
Autopsy with histology	0	0	0	0	0	0
Unknown	0	0	6	0.9	6	0.8
<b>All Patients</b>	<b>7</b>	<b>100</b>	<b>679</b>	<b>100</b>	<b>686</b>	<b>100</b>

**TABLE 28**  
**The Type of Extension in Breast Cancer**

Type of Extension	Male		Female		Total	
	n	%	n	%	n	%
Not record	0	0	0	0	0	0
In situ	0	0	0	0	0	0
Localized	3	42.9	93	13.7	96	14
Direct extension	0	0	125	18.4	125	18.2
Regional lymph nodes	3	42.9	236	34.8	239	34.8
Distant metastasis	0	0	87	12.8	87	12.7
Not applicable	0	0	0	0	0	0
Unknown	1	14.3	138	20.3	139	20.3
<b>All Patients</b>	<b>7</b>	<b>100</b>	<b>679</b>	<b>100</b>	<b>686</b>	<b>100</b>

**TABLE 29**  
**Stage of Breast Cancer**

Stage	Male		Female		Total	
	n	%	n	%	n	%
Not record	0	0	0	0	0	0
Stage I, A	1	14.3	59	8.6	60	8.7
Stage II, B	4	57.1	198	29.2	202	29.4
Stage III, C	0	0	135	19.8	135	19.7
Stage IV, D	1	14.3	111	16.4	112	16.3
Stage II a, B1	0	0	1	0.2	1	0.2
Stage II b, B2	0	0	1	0.2	1	0.2
Stage III a, C1	0	0	1	0.2	1	0.2
Stage III b, C2	0	0	0	0	0	0
Unknown	1	14.3	173	25.4	174	25.4
<b>All Patients</b>	<b>7</b>	<b>100</b>	<b>679</b>	<b>100</b>	<b>686</b>	<b>100</b>

**TABLE 30**  
**Method of Treatment of All Patients Breast**

Method of Treatment	Male		Female		Total	
	n	%	n	%	n	%
Surgery only	2	28.6	270	39.8	272	39.6
Radiotherapy only	0	0	14	2	14	2.2
Chemotherapy only	0	0	86	12.7	86	12.5
Supportive only	0	0	37	5.5	37	5.4
Surgery + Radiotherapy	1	14.3	38	5.6	39	5.7
Surgery + Radiotherapy + Chemotherapy	1	14.3	32	4.7	33	4.8
Surgery + Radiotherapy + Chemotherapy + Hormone	0	0	1	0.2	1	0.2
Surgery + Chemotherapy	2	28.6	118	17.4	120	17.5
Surgery + Chemotherapy + Hormone	0	0	3	0.4	3	0.4
Surgery + Hormone	0	0	3	0.4	3	0.4
Radiotherapy + Chemotherapy	1	14.3	20	3	21	3.1
Other	0	0	6	0.9	6	0.9
Not record	0	0	51	7.5	51	7.4
<b>All Patients</b>	<b>7</b>	<b>100</b>	<b>679</b>	<b>100</b>	<b>686</b>	<b>100</b>

**TABLE 31**  
**Number by Age - Group and Sex for Cervix**

Age	Male		Female		Total	
	n	%	n	%	n	%
Not record	0	0	0	0	0	0
> 0-04	0	0	0	0	0	0
05-09	0	0	0	0	0	0
10-14	0	0	0	0	0	0
15-19	0	0	0	0	0	0
20-24	0	0	0	0	0	0
25-29	0	0	7	1.8	7	1.8
30-34	0	0	18	4.5	18	4.5
35-39	0	0	37	9.3	37	9.3
40-44	0	0	55	13.9	55	13.9
45-49	0	0	73	18.4	73	18.4
50-54	0	0	62	15.6	62	15.6
55-59	0	0	46	11.6	46	11.6
60-64	0	0	42	10.6	42	10.6
65-69	0	0	33	8.3	33	8.3
70-74	0	0	15	3.8	15	3.8
75-79	0	0	7	1.8	7	1.8
80-84	0	0	2	0.5	2	0.5
85-89	0	0	0	0	0	0
90-94	0	0	0	0	0	0
≥ 95	0	0	0	0	0	0
<b>All patients</b>	<b>0</b>	<b>0</b>	<b>397</b>	<b>100</b>	<b>397</b>	<b>100</b>

**TABLE 32**  
**Basis of Diagnosis of Cervix Cancer**

Type of Diagnosis	Male		Female		Total	
	n	%	n	%	n	%
Not record	0	0	0	0	0	0
History & Physical exam	0	0	6	1.5	6	1.5
Endoscopy & Padiology	0	0	0	0	0	0
Surgery & Autopsy (no histol)	0	0	0	0	0	0
Specific biochem / Immuno tests	0	0	0	0	0	0
Cytology or Hematology	0	0	4	1	4	1
Histology of metastatic	0	0	1	0.3	1	0.3
Histology of primary	0	0	383	96.5	383	96.5
Autopsy with histology	0	0	0	0	0	0
Unknown	0	0	2	0.5	2	0.5
<b>All Patients</b>	<b>0</b>	<b>0</b>	<b>397</b>	<b>100</b>	<b>397</b>	<b>100</b>

**TABLE 33**  
**The Type of Extension in Cervix Cancer**

Type of Extension	Male		Female		Total	
	n	%	n	%	n	%
Not record	0	0	0	0	0	0
In situ	0	0	1	0.3	1	0.3
Localized	0	0	85	21.4	85	21.4
Direct extension	0	0	211	53.2	211	53.2
Regional lymph nodes	0	0	6	1.5	6	1.5
Distant metastasis	0	0	10	2.5	10	2.5
Not applicable	0	0	0	0	0	0
Unknown	0	0	84	21.2	84	21.2
<b>All Patients</b>	<b>0</b>	<b>0</b>	<b>397</b>	<b>100</b>	<b>397</b>	<b>100</b>

**TABLE 34**  
**Stage of Cervix Cancer**

Stage	Male		Female		Total	
	n	%	n	%	n	%
Not record	0	0	1	0.3	1	0.3
Stage I, A	0	0	59	14.6	59	14.6
Stage II, B	0	0	210	51.8	210	51.8
Stage III, C	0	0	89	22	89	22
Stage IV, D	0	0	10	2.5	10	2.5
Stage II a, B1	0	0	0	0	0	0
Stage II b, B2	0	0	0	0	0	0
Stage III a, C1	0	0	1	0.3	1	0.3
Stage III b, C2	0	0	1	0.3	1	0.3
Unknown	0	0	26	6.5	26	6.5
<b>All Patients</b>	<b>0</b>	<b>0</b>	<b>397</b>	<b>100</b>	<b>397</b>	<b>100</b>

**TABLE 35**  
**Method of Treatment of All Patients Cervix**

Method of Extension	Male		Female		Total	
	n	%	n	%	n	%
Surgery only	0	0	65	16.4	65	16.4
Radiotherapy only	0	0	229	57.7	229	57.7
Chemotherapy only	0	0	5	1.3	5	1.3
Supportive only	0	0	19	4.8	19	4.8
Surgery + Radiotherapy	0	0	36	9.1	36	9.1
Surgery + Radiotherapy + Chemotherapy	0	0	4	1	4	1
Surgery + Chemotherapy	0	0	3	0.8	3	0.8
Radiotherapy + Chemotherapy	0	0	10	2.5	10	2.5
Chemo + Hormone	0	0	1	0.3	1	0.3
Other	0	0	3	0.8	3	0.8
Not record	0	0	22	5.5	22	5.5
<b>All Patients</b>	<b>0</b>	<b>0</b>	<b>397</b>	<b>100.00</b>	<b>397</b>	<b>100.00</b>

**FIGURE 4**  
**Distribution of Cancer Patients by Region**

