

# CURRENT IN CANCER TREATMENT

---

นพ.วิษณุ ปานจันทร์

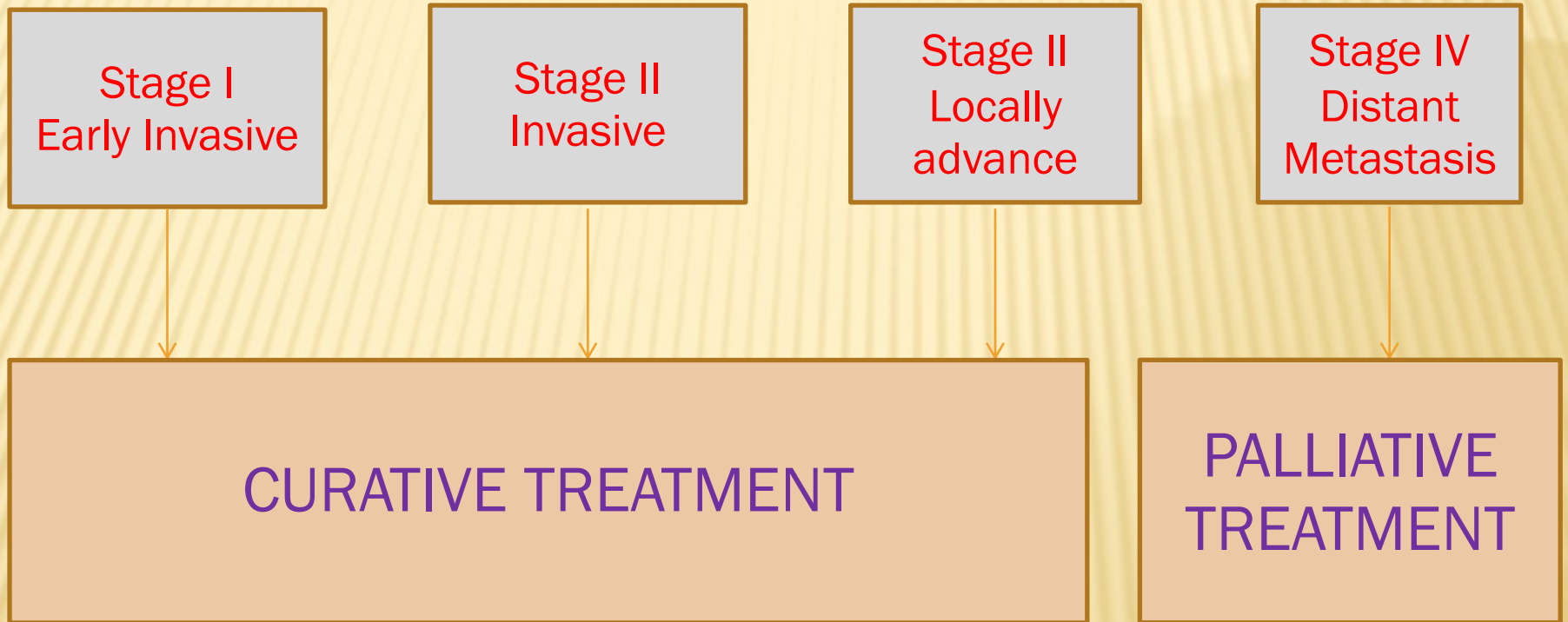
สถาบันมะเร็งแห่งชาติ

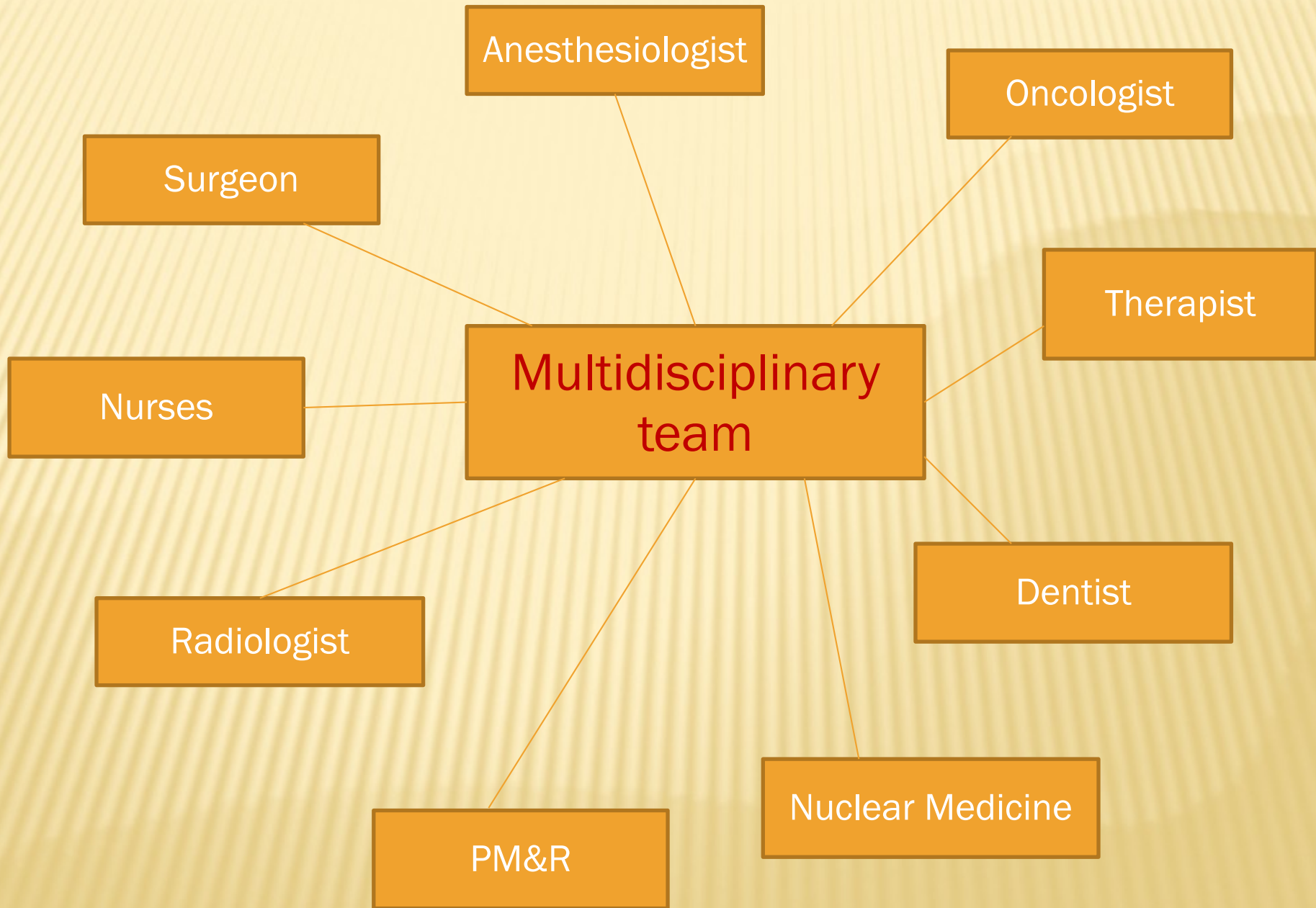
# PRINCIPLES IN CANCER TREATMENT

- ✘ Aim : Curative vs Palliative
- ✘ Dimension : Patient & Relatives : Overall Diseases : Multidisciplinary team
- ✘ Monitor & Evaluation

# CANCER STAGING

---





# SOURCE OF CANCER CLINICAL PRACTICE GUIDELINES

---

- ✘ National Comprehensive Cancer Network **NCCN**
- ✘ European Society for Medical Oncology **ESMO**
- ✘ Japanese Gastric Cancer Association **JGCA**
- ✘ Japanese Society for Cancer of the Colon and Rectum **JSCCR**
- ✘ Royal College of Surgeons of Thailand **RCST**
- ✘ National Cancer Institute Thailand **NCI**

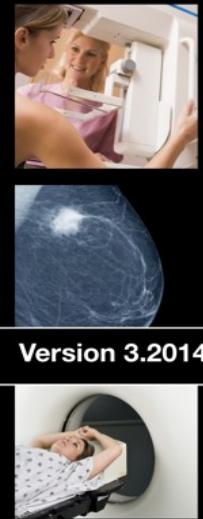
# NCCN


NCCN Clinical Practice Guidelines in Oncology  
(NCCN Guidelines®)

## Breast Cancer

Formatted for Mobile Devices

**Version 3.2014**



 National  
Comprehensive  
Cancer  
Network®


NCCN.org

NCCN Clinical Practice Guidelines in Oncology  
(NCCN Guidelines®)

## Hepatobiliary Cancers


Formatted for Mobile Devices

**Version 1.2015**



 National  
Comprehensive  
Cancer  
Network®

NCCN.org

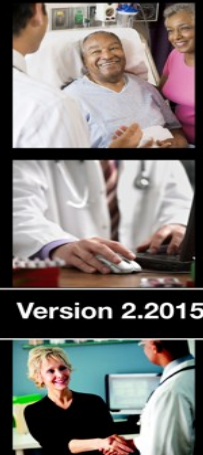



NCCN Clinical Practice Guidelines in Oncology  
(NCCN Guidelines®)

## Rectal Cancer


Formatted for Mobile Devices

**Version 2.2015**



 National  
Comprehensive  
Cancer  
Network®

NCCN.org





NCCN Clinical Practice Guidelines in Oncology  
(NCCN Guidelines®)

## Colon Cancer

Formatted for Mobile Devices

**Version 2.2015**



 National  
Comprehensive  
Cancer  
Network®

NCCN.org

# ราชวิทยาลัยตติยแพทย์แห่งประเทศไทย RCST : CANCER CPG

---

- ✗ มะเร็งลำไส้ใหญ่และทวารหนัก
- ✗ Bleeding per rectum
- ✗ ก้อนที่ตับม
- ✗ มะเร็งหลอดอาหาร

# สถาบันม:เริ่งแห่งชาติ : CPG

[WWW.KMNCI.COM](http://WWW.KMNCI.COM)

- ✘ ม:เริ่งลำสึทงและลำสึตรง
- ✘ ม:เริ่งตบและท่อน้ำดี
- ✘ ม:เริ่งต่านม
- ✘ ม:เริ่งปากมดลูก
- ✘ ม:เริ่งปอด
- ✘ ม:เริ่งหลังโพรงมูก
- ✘ ม:เริ่งรังไข่
- ✘ การดูแลผู้ป่วยโรคม:เริ่งแบบประตบประตอง
- ✘ ม:เริ่งช่องปาก



แนวทางการตรวจคัดกรอง  
วินิจฉัยและรักษาโรค

# มะเร็งลำไส้ใหญ่ และไส้ตรง

สถาบันมะเร็งแห่งชาติ  
กรมการแพทย์ กระทรวงสาธารณสุข  
ISBN 978-616-11-2486-1

(ปรับปรุง ครั้งที่ 1)



แนวทางการตรวจคัดกรอง วินิจฉัย  
และรักษาโรคมะเร็งเต้านม



สถาบันมะเร็งแห่งชาติ  
กรมการแพทย์ กระทรวงสาธารณสุข  
ISBN 978-974-422-672-3

# MULTIMODALITY TREATMENT

---

- × Surgery
- × Chemotherapy
- × Radiation therapy
- × Hormonal therapy
- × Ablative therapy : Cryo-Laser-Radiofrequency
- × *Oncothermia*
- × *HIFU*
- × *Brachytherapy*
- × *Herbal therapy*

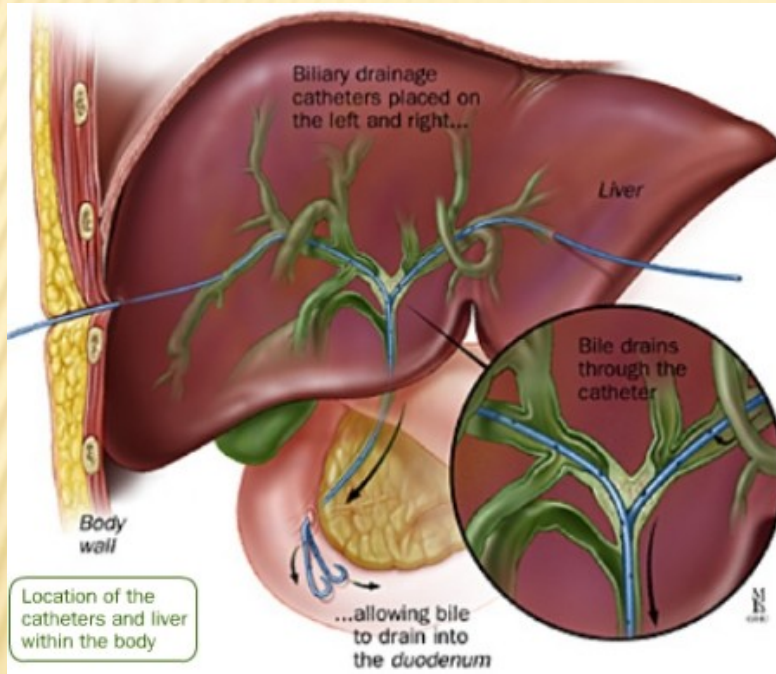
# MULTIMODALITY TREATMENT

	Surgery	Chemo	Radiation	Hormone	Other
Breast	////////	////////	////////	////////	
Lung	////	////////	////		
Cervix	///	////////	////////		
Liver	////////				TACE,RFA
Colorectal	////////	////////	////		
Head&Neck	////	////////	////////		
Leukemia		////////			
Prostate	////	////	////	////	

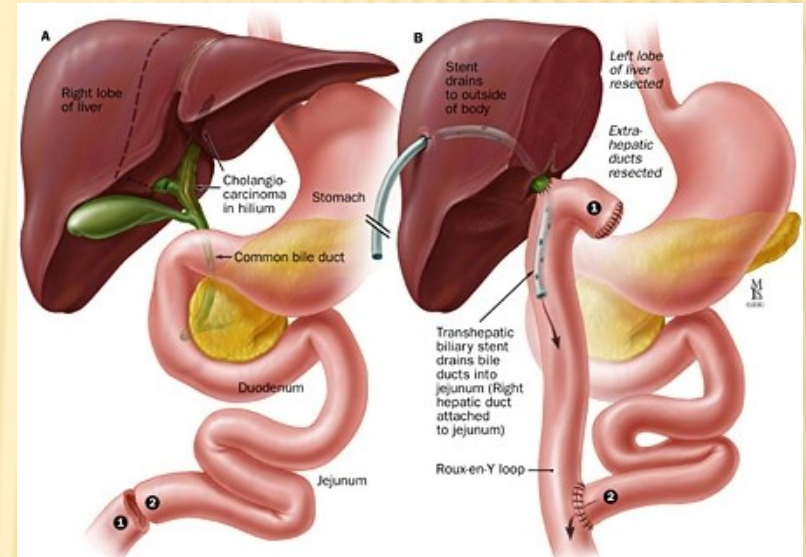
---

# **CURATIVE VS. PALLIATIVE TREATMENT**

## PTBD

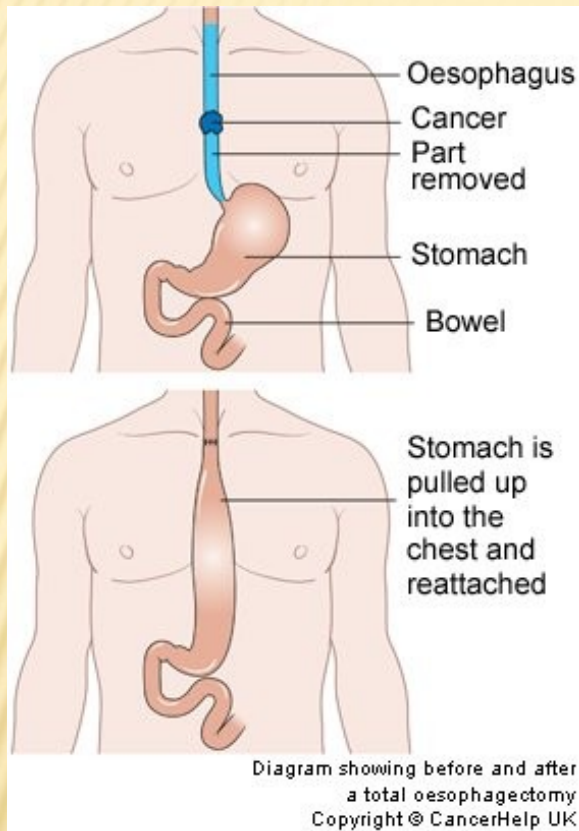


## CURATIVE RESECTION ( LT. HEPATECTOMY , ROUX-EN-Y HEPATICOJEJUNOSTOMY

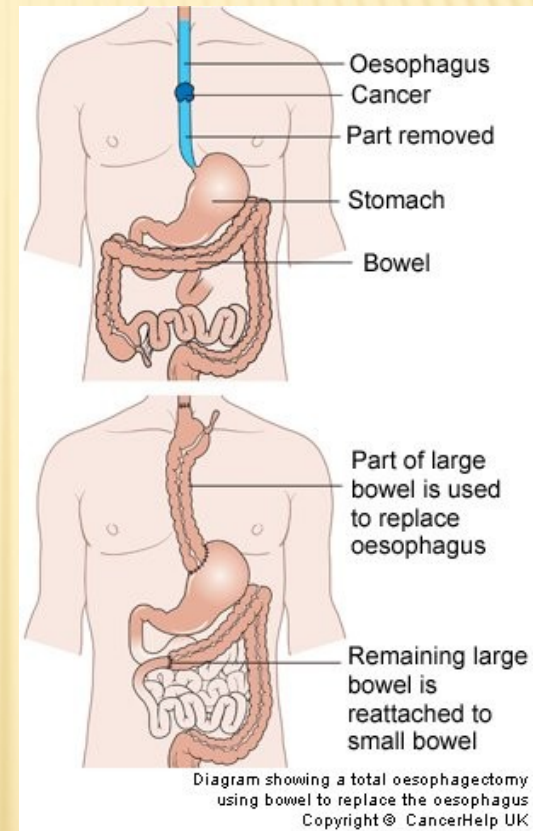


# CHOLANGIOCARCINOMA

## GASTRIC TUBE

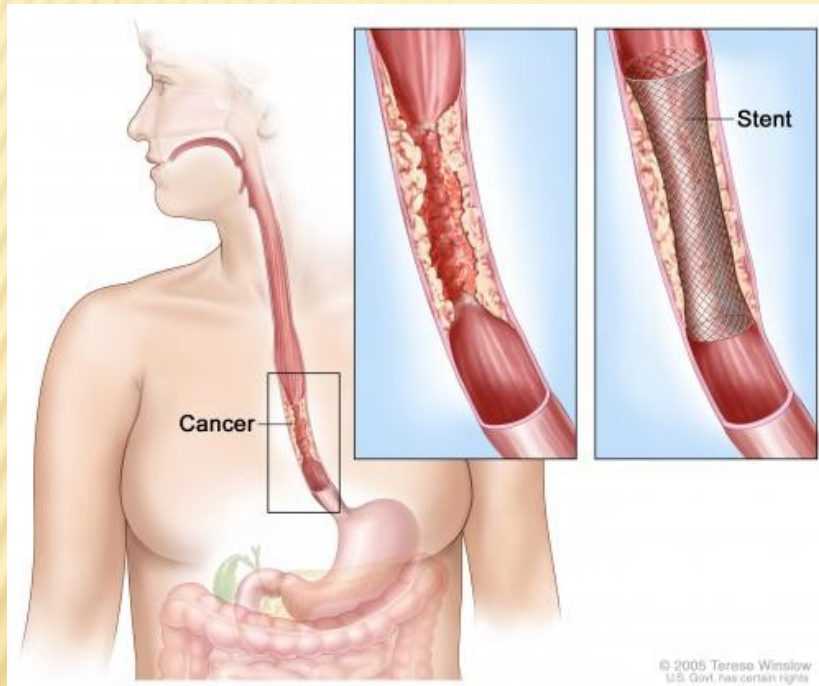


## COLONIC INTERPOSITION

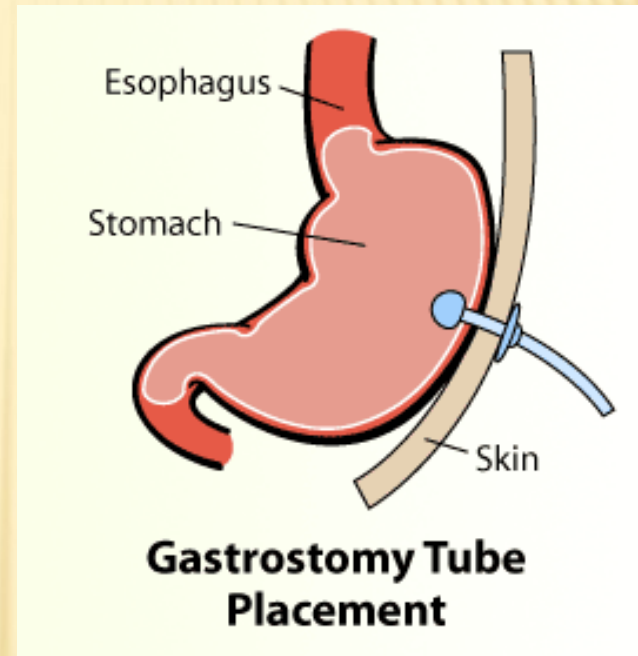


**CA ESOPHAGUS CURATIVE TREATMENT :  
ESOPHAGECTOMY**

## ESOPHAGEAL STENT

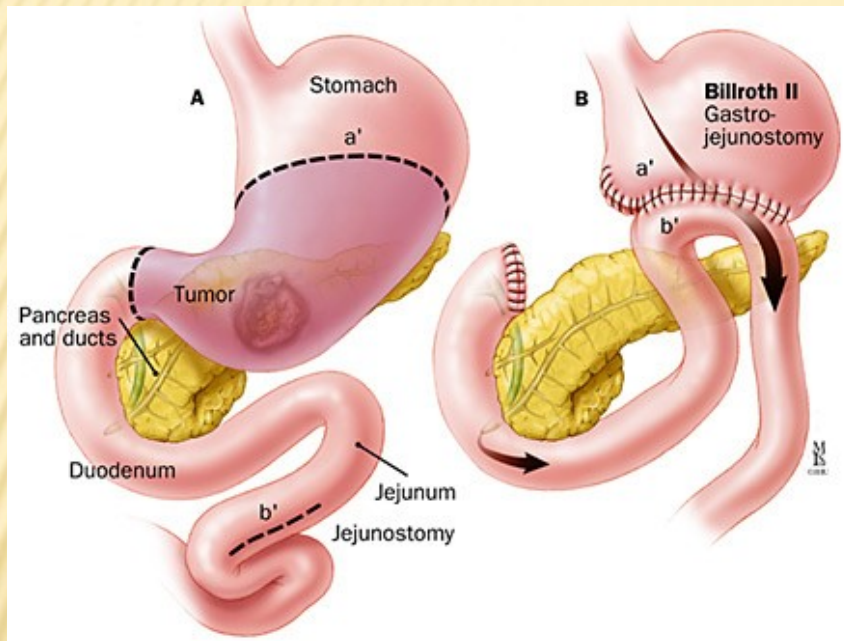


## GASTROSTOMY

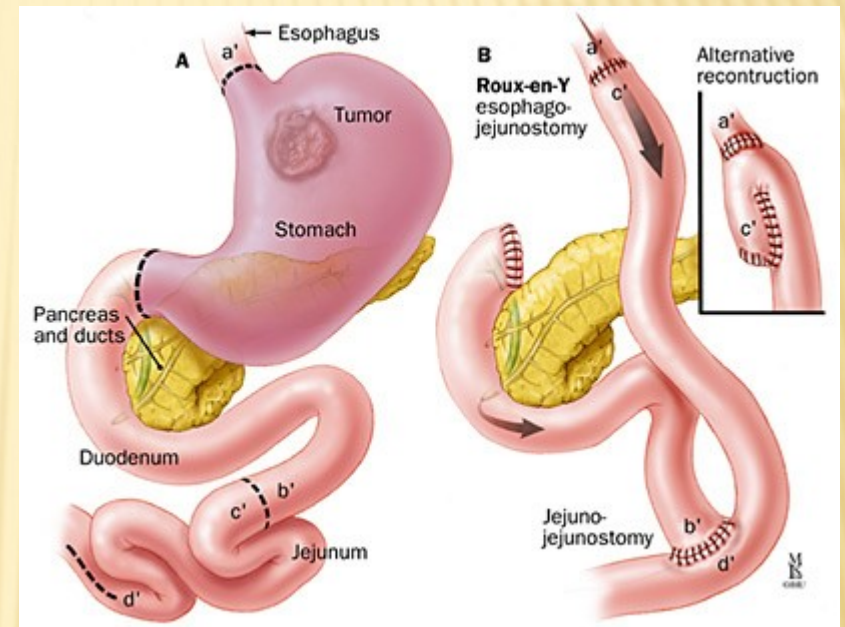


**CA ESOPHAGUS PALLIATIVE TREATMENT**

## SUBTOTAL GASTRECTOMY

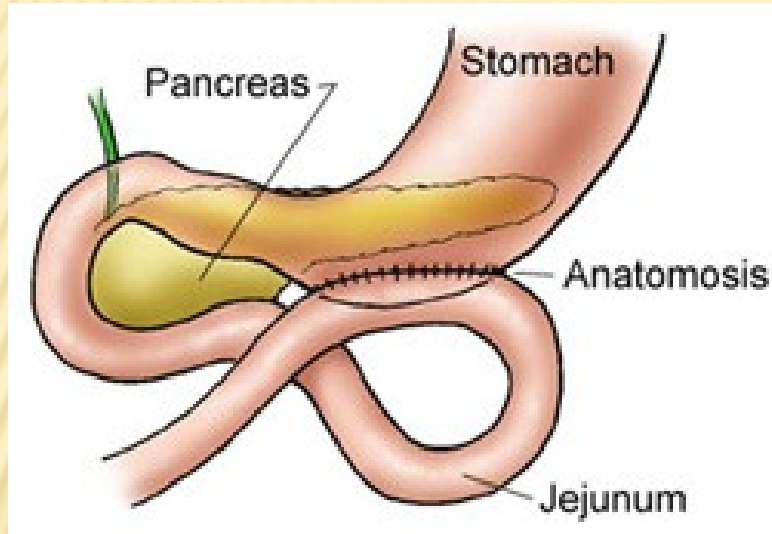


## TOTAL GASTRECTOMY



**CA STOMACH : CURATIVE RESECTION**

## GASTROJEJUNOSTOMY

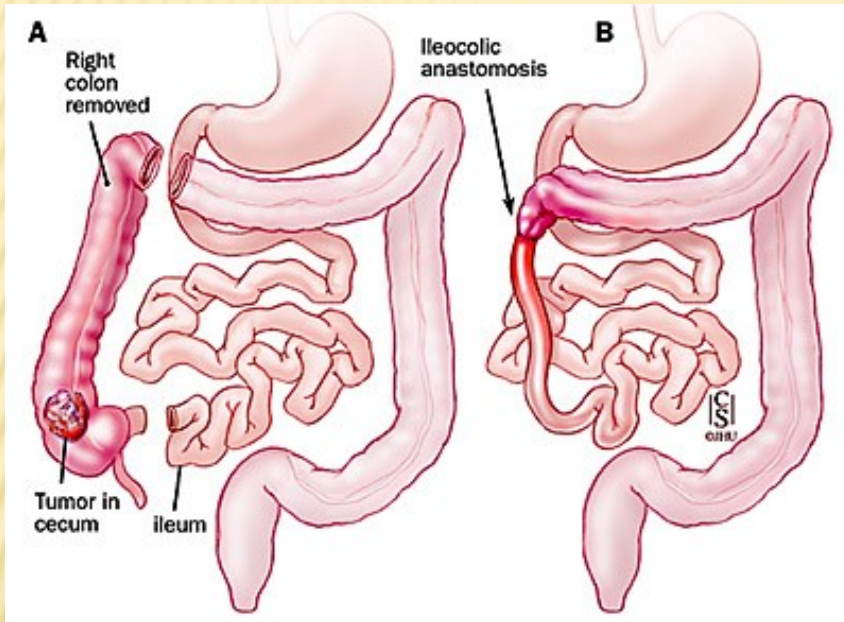


## JEJUNOSTOMY

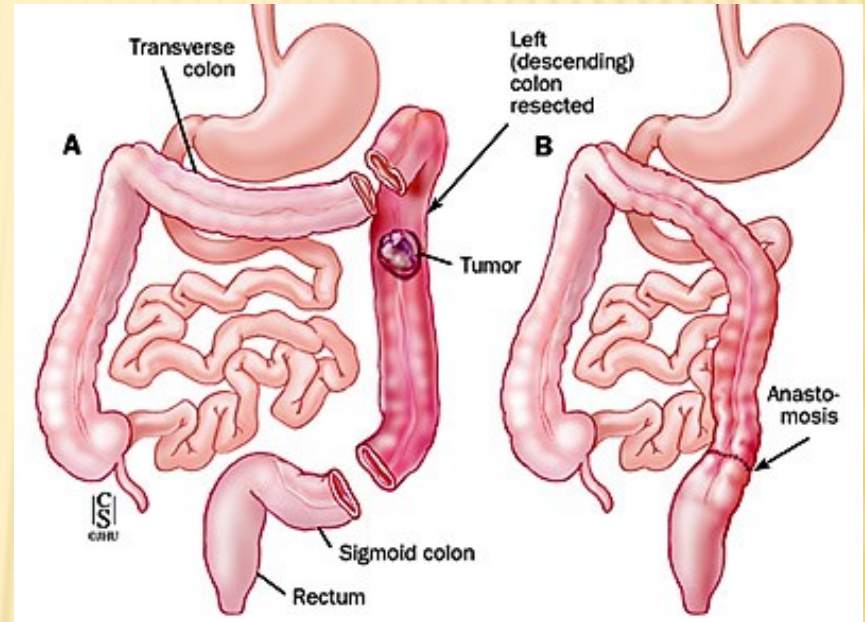


**CA STOMACH : PALLIATIVE TREATMENT**

## RT. HEMICOLECTOMY

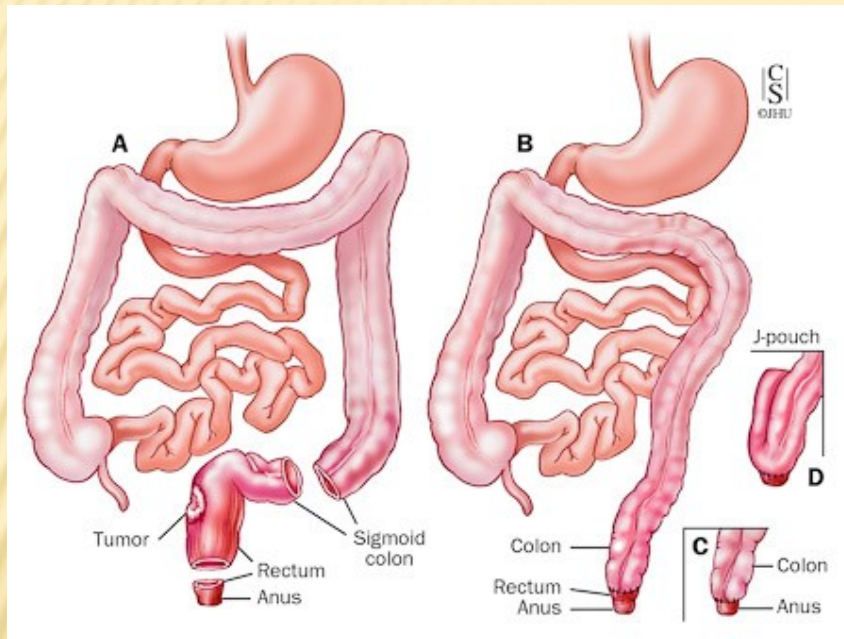


## LT. HEMICOLECTOMY

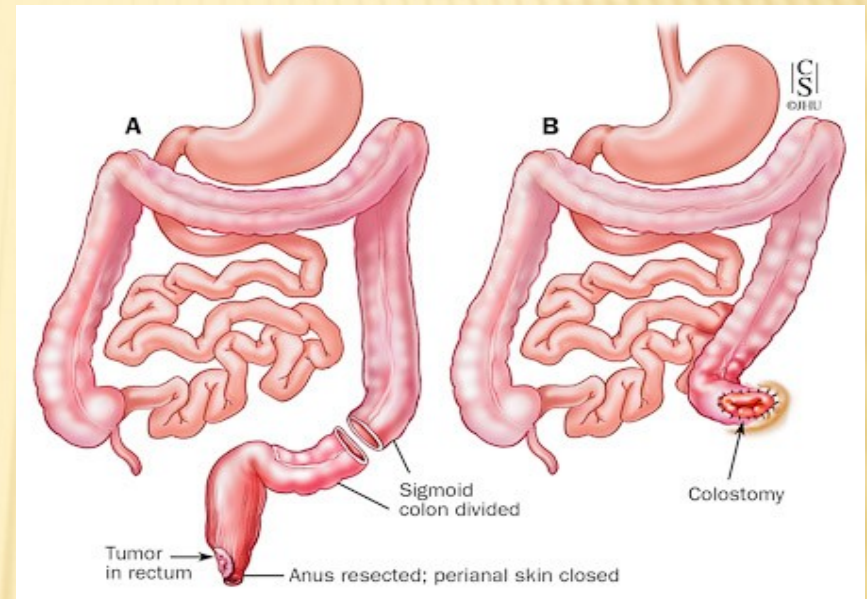


**CA COLON : CURATIVE RESECTION**

## LOW ANTERIOR RESECTION



## ABDOMINO-PERINEAL RESECTION



# CA RECTUM : CURATIVE RESECTION

# CA RECTUM : PALLIATIVE TREATMENT : COLOSTOMY



# RADIATION THERAPY



# Palliative Treatment

Pain Control

Nutrition

Reduced  
Complication

Good Quality of  
life

Surgery

Pain Killer Medication

Radiation

Palliative Chemotherapy

Psychosocial & Spiritual  
support

---

**THANK YOU**