

Chapter II

11

BREAST
ICD-10 C50

Nimit Martin, M.D.
Arkom Cheirsilpa, M.D.

In Thailand during the period 1995-1997, female breast cancer is the second in frequency after cervical cancer. The estimated incidence rate is 17.2 per 100 000. The highest incidence rate of female breast cancer is in Bangkok (ASR = 25.4), the lowest incidence rate is in Khon Kaen (ASR = 11.6) as shown in Figure 2.11.1.

Breast cancer is the most common cancer in females in Bangkok, the second in Songkhla after cervix cancer, the third in Chiang Mai, and Lampang after cervix and lung cancers and the third in Khon Kaen after liver and cervix cancers.

The age-specific incidence rates reach a peak at age 45 in most

Figure 2.11.1 Breast cancer in different regions, 1995-1997

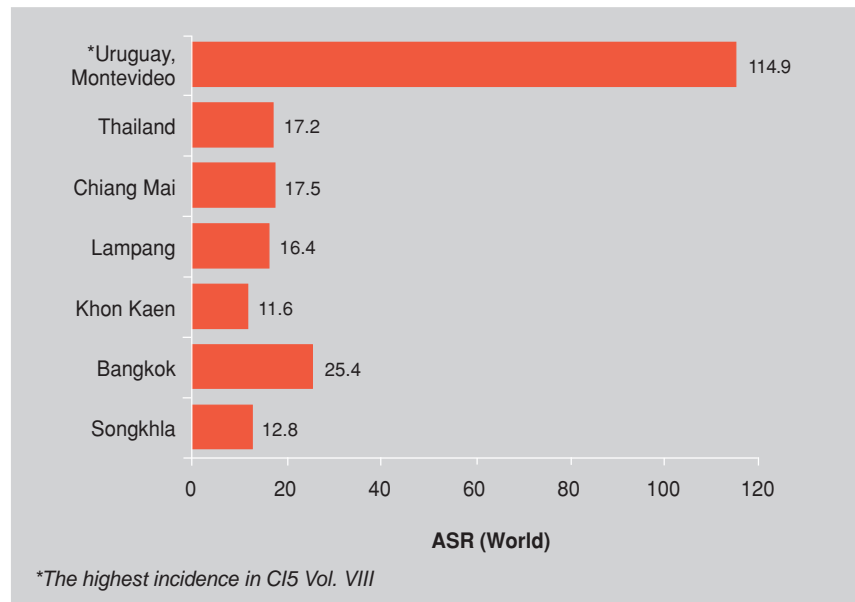


Figure 2.11.2 Age-specific incidence rates of breast cancer, 1995-1997

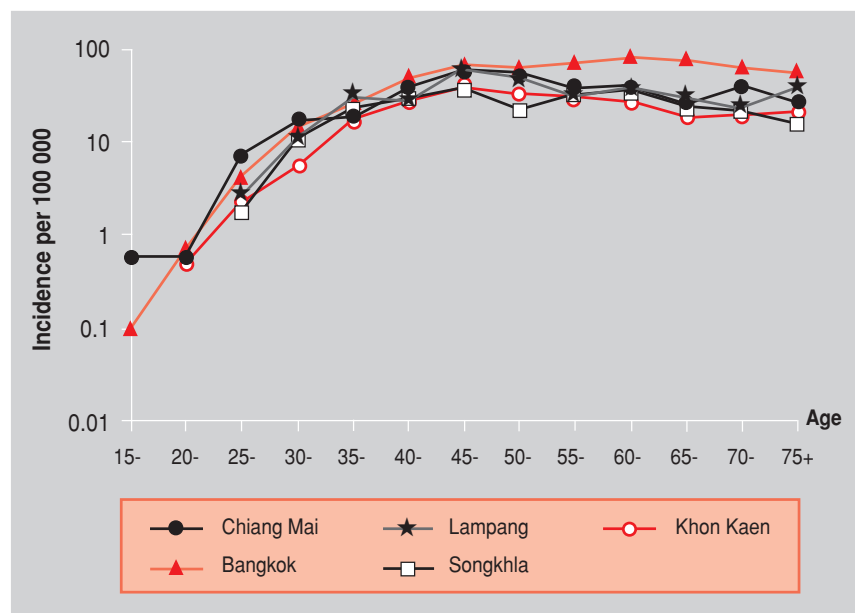
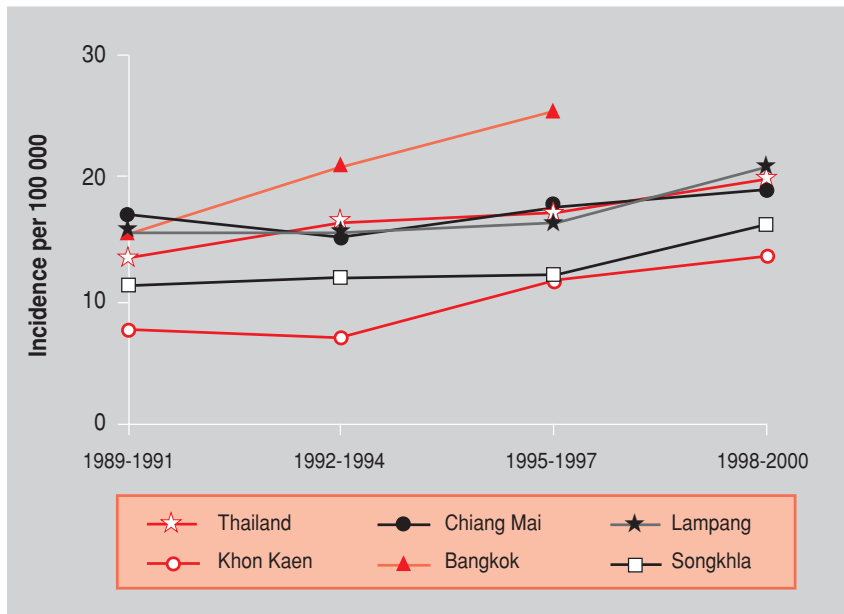


Figure 2.11.3 Trend in incidence of breast cancer



registries except Bangkok (Figure 2.11.2). The incidence increased in all parts of the country during the past decade (Figure 2.11.3).